

# Waverley

SERIES



Metro Facade

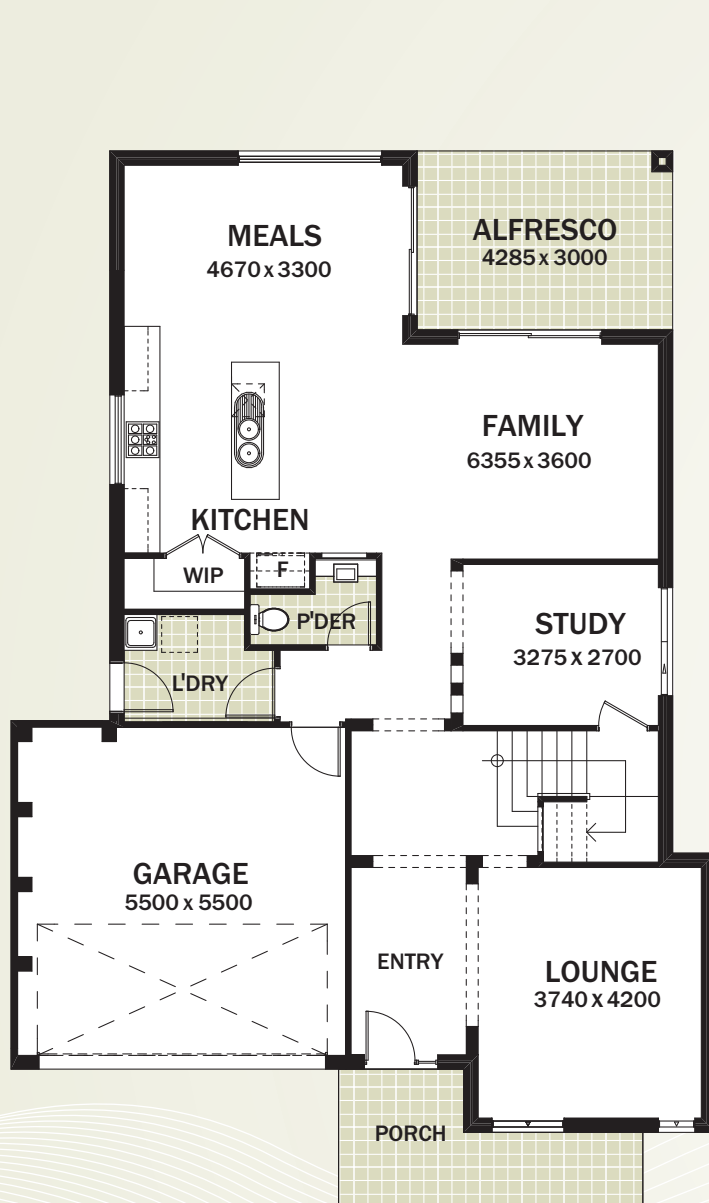


[provincialhomes.com.au](http://provincialhomes.com.au)

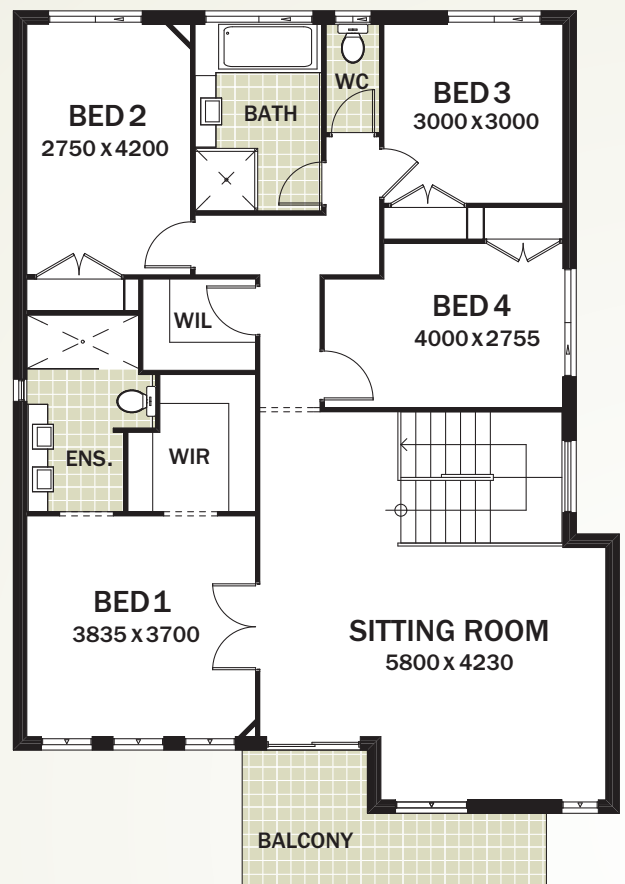
Proven  
Professional  
Provincial Homes



# Waverley 32



Ground Floor



First Floor

Ground Floor	115.89m <sup>2</sup>
First Floor	123.98m <sup>2</sup>
Garage	33.21m <sup>2</sup>
Alfresco	12.85m <sup>2</sup>
Porch	8.50m <sup>2</sup>

Balcony	8.50m <sup>2</sup>
<b>Total</b>	<b>302.93m<sup>2</sup>/32.6sq</b>
<b>Width</b>	<b>11.81m</b>
<b>Depth</b>	<b>17.68m</b>

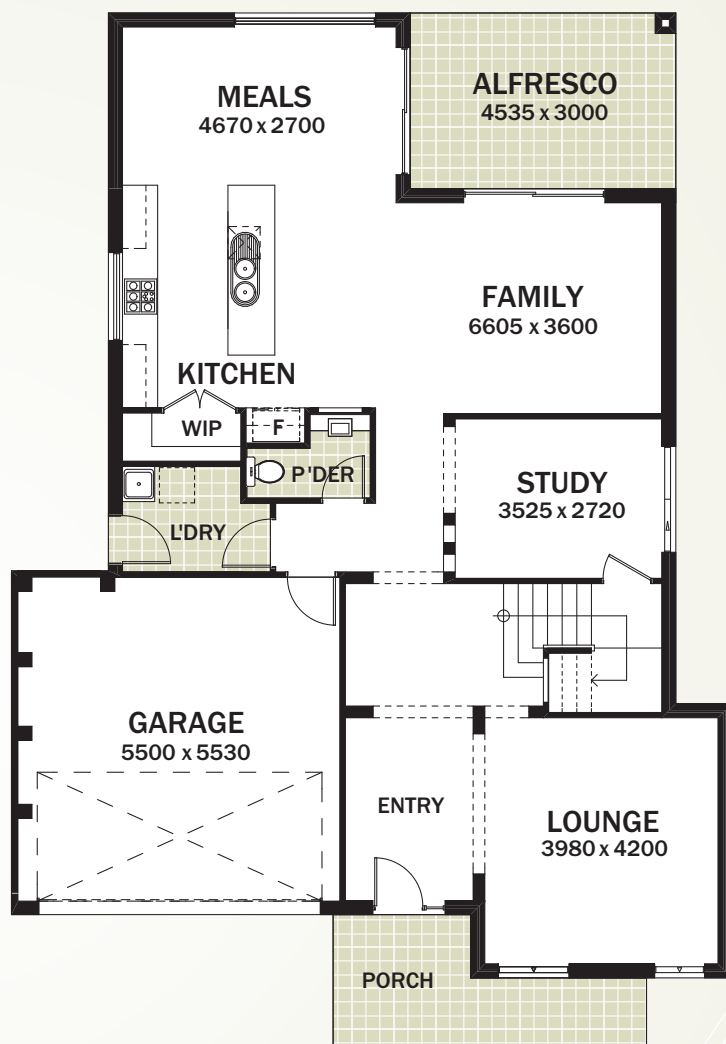
4 Bed

2.5 Bath

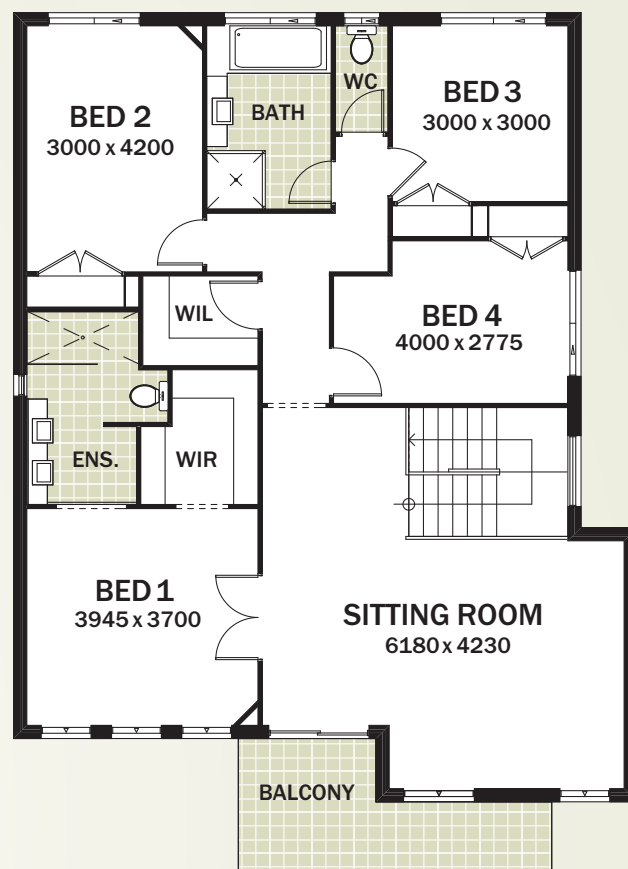
2 Car



# Waverley 34



Ground Floor



First Floor

<b>Ground Floor</b>	120.06m <sup>2</sup>
<b>First Floor</b>	128.27m <sup>2</sup>
<b>Garage</b>	33.38m <sup>2</sup>
<b>Alfresco</b>	13.60m <sup>2</sup>
<b>Porch</b>	9.12m <sup>2</sup>

<b>Balcony</b>	9.12m <sup>2</sup>
<b>Total</b>	313.55m <sup>2</sup> /33.7sq
<b>Width</b>	12.30m
<b>Depth</b>	17.70m

4 Bed

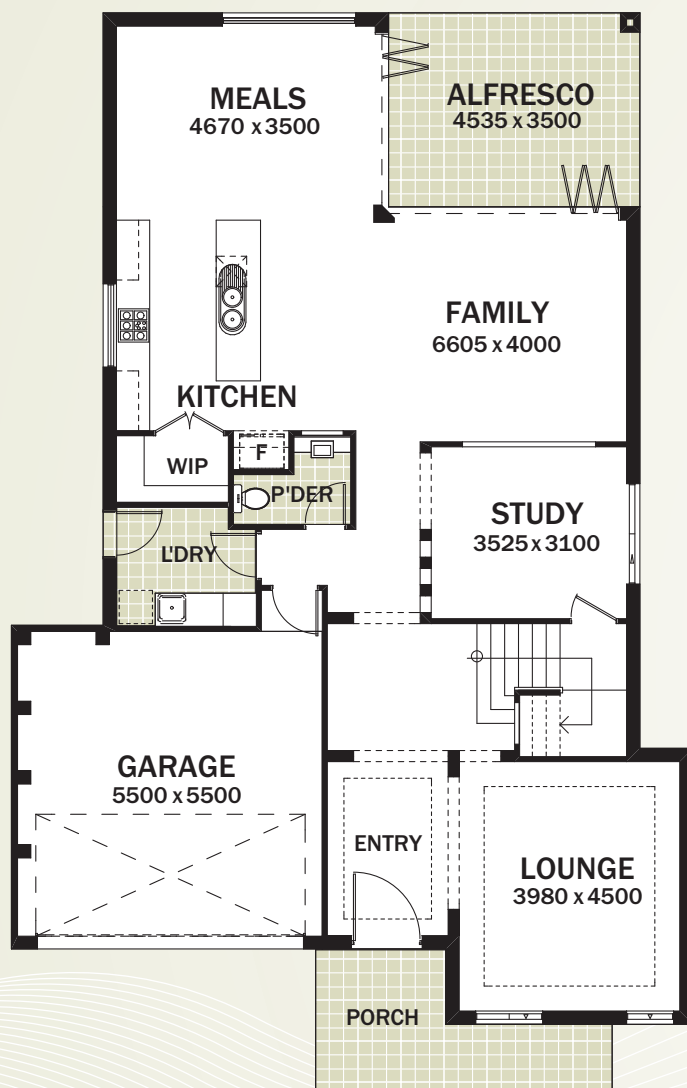
2.5 Bath

2 Car

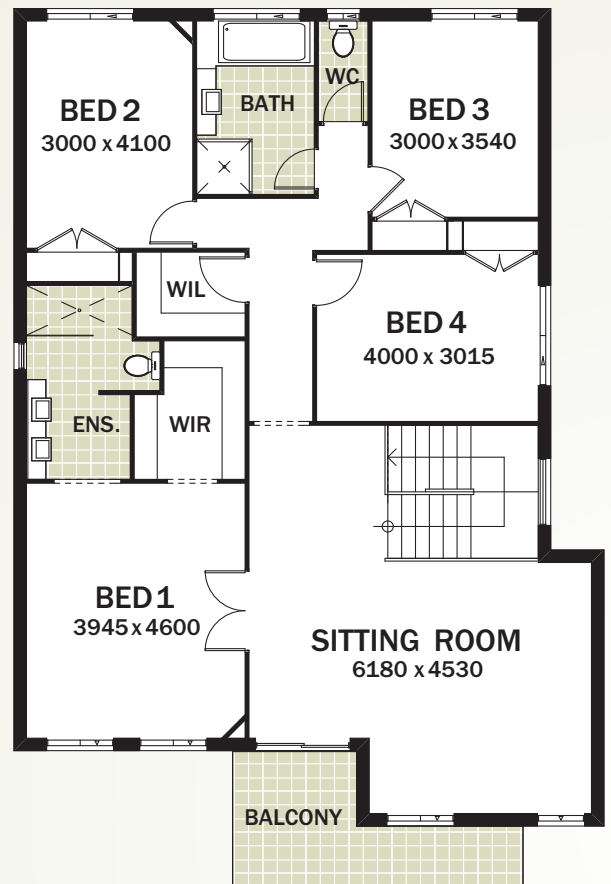




# Waverley 36



Ground Floor



First Floor

<b>Ground Floor</b>	132.76m <sup>2</sup>
<b>First Floor</b>	139.22m <sup>2</sup>
<b>Garage</b>	34.15m <sup>2</sup>
<b>Alfresco</b>	15.87m <sup>2</sup>
<b>Porch</b>	9.78m <sup>2</sup>

<b>Balcony</b>	9.22m <sup>2</sup>
<b>Total</b>	341m <sup>2</sup> /36.5sq
<b>Width</b>	12.30m
<b>Depth</b>	19.48m

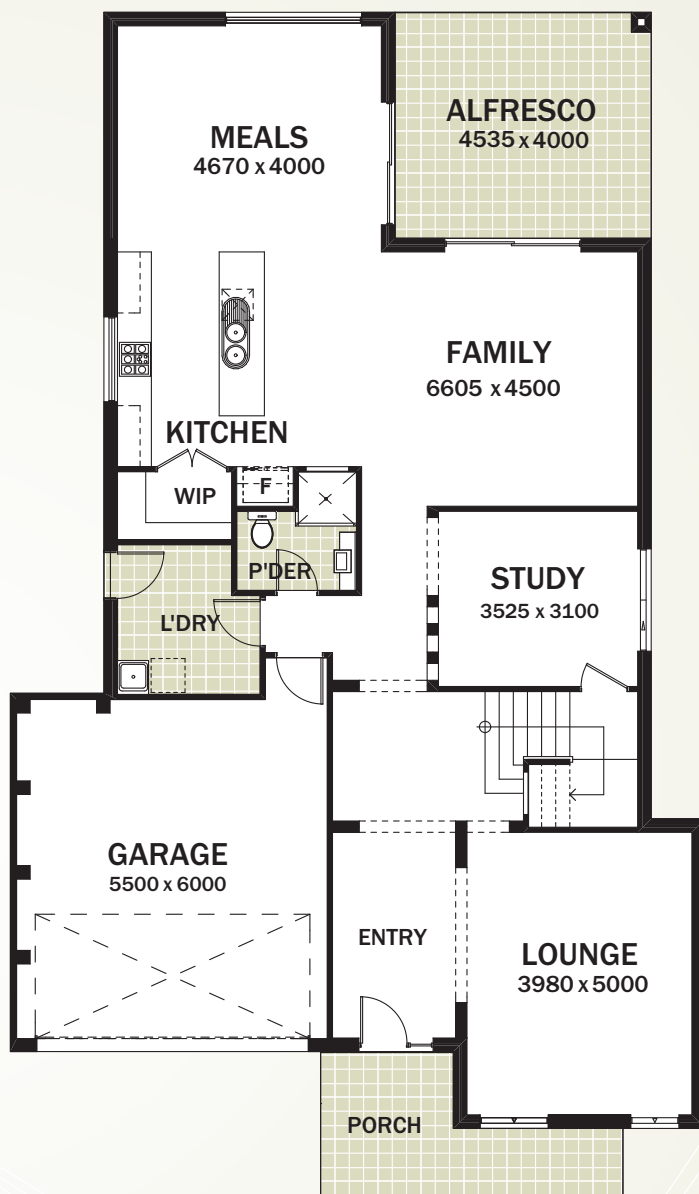
4 Bed

2.5 Bath

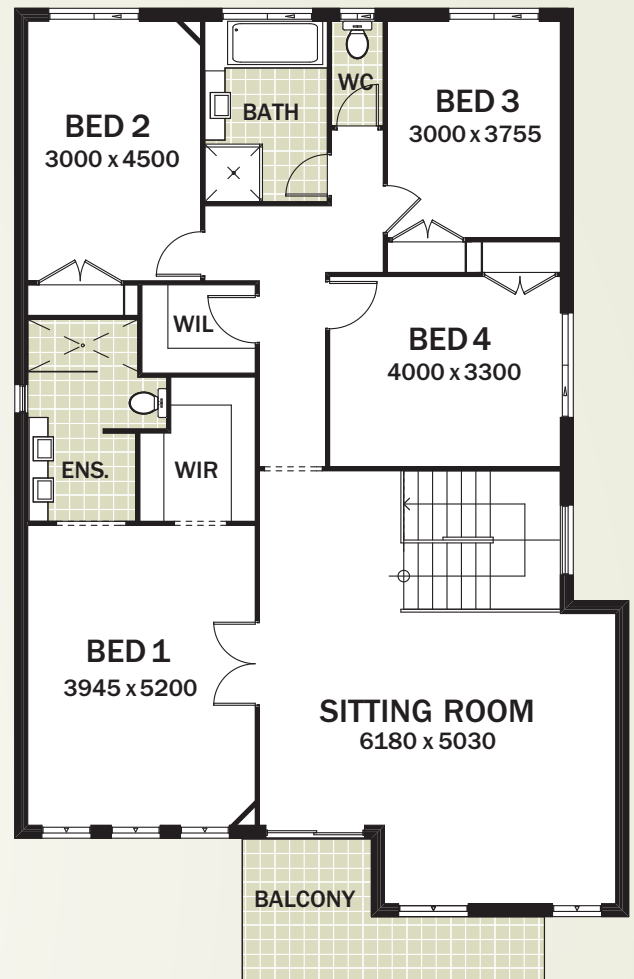
2 Car



# Waverley 40



Ground Floor



First Floor

Ground Floor	143.48m <sup>2</sup>
First Floor	149.39m <sup>2</sup>
Garage	37.00m <sup>2</sup>
Alfresco	18.14m <sup>2</sup>
Porch	9.78m <sup>2</sup>

Balcony	9.22m <sup>2</sup>
<b>Total</b>	<b>367.01m<sup>2</sup>/39.5sq</b>
<b>Width</b>	<b>12.30m</b>
<b>Depth</b>	<b>20.98m</b>

4 Bed

3 Bath

2 Car





# Waverley Facade Options



Boulevard Facade



Cameo Facade



Impression Facade



Interlude Facade



Suburban Facade



Traditional Facade





Coastal Facade



Designer Facade



Nu Vogue Facade



Prestige Facade



Come and see us  
**ON DISPLAY**



### **HEMEWORLD V**

KELLYVILLE

(off Windsor Road)

Cardell Road

Tel: 02 9629 5200

OPEN 7 DAYS 10am to 5pm

**NEW**

### **HEMEWORLD SOUTH**

GLEDSDWOOD HILLS

(off Camden Valley Way)

Halifax Way

Tel: 02 9606 7040

OPEN 5 DAYS 10am to 5pm

Friday to Tuesday

(Closed Wed & Thurs)

**NEW**

# Proven Professional Provincial Homes

[provincialhomes.com.au](http://provincialhomes.com.au)

The details in the brochure and any associated marketing material are subject to change without prior notice and are for information purposes only. All illustrations and plans are indicative artists impressions only and are not necessarily to scale or to absolute likeness. Provincial Homes reserves the right to change plans, specification and prices without notice. Each home design and construction is copyright by Provincial Homes Pty Ltd.  
Builders Lic No. 5685C ABN 31 003 934 058.