

Birchgrove

SERIES



On Display
**HOMEWORLD
BOX HILL**

Seacrest Facade

A Nice way to live

Proven
Professional
Provincial Homes 





The Birchgrove is a home with a new level of lifestyle

The Birchgrove is a beautiful double storey 4 bedroom home which is cleverly designed for your narrow block. A spacious kitchen and 2 way pantry flows seamlessly into the family, meals and alfresco areas. A centrally located home theatre that the family will appreciate, and a generous size study is positioned at the front of the house.

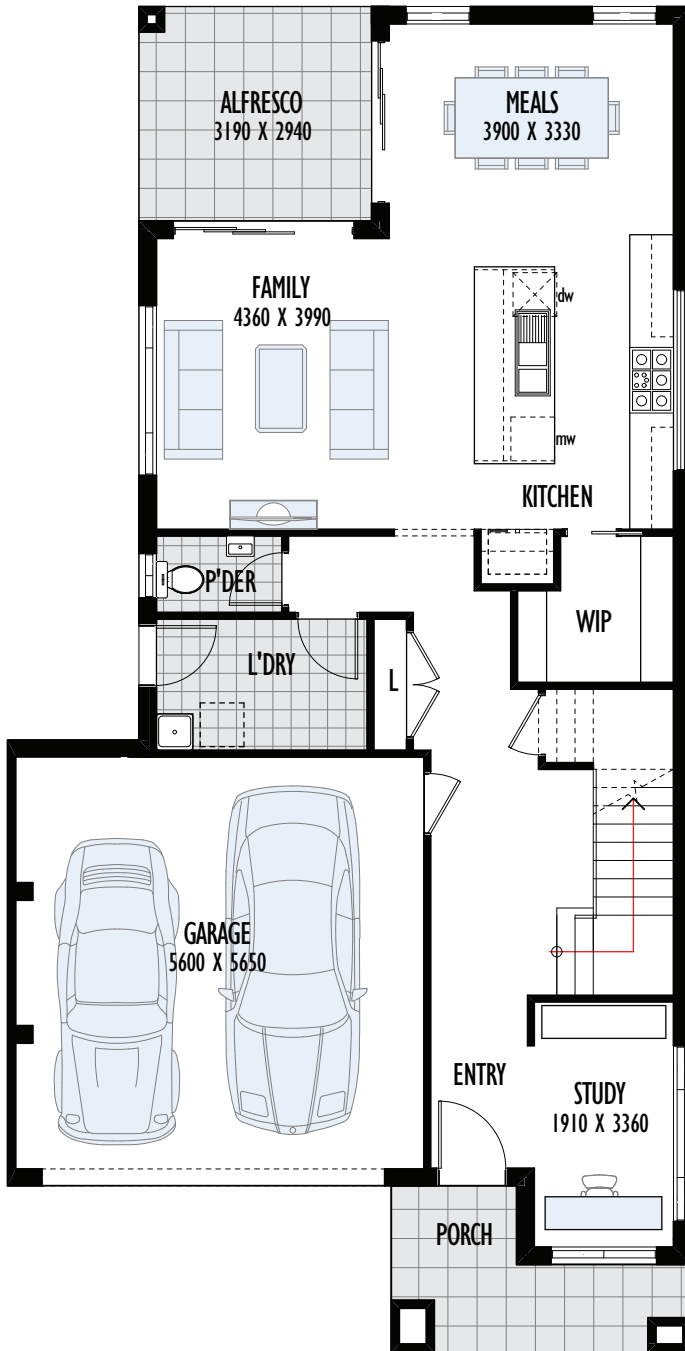
The staircase continues to the first floor where you will find a spacious sitting room as you reach the top of the first floor, the master bedroom overlooking a balcony and extra big walk in robe with stunning ensuite.

This home ticks all the boxes to accommodate every family member's needs.

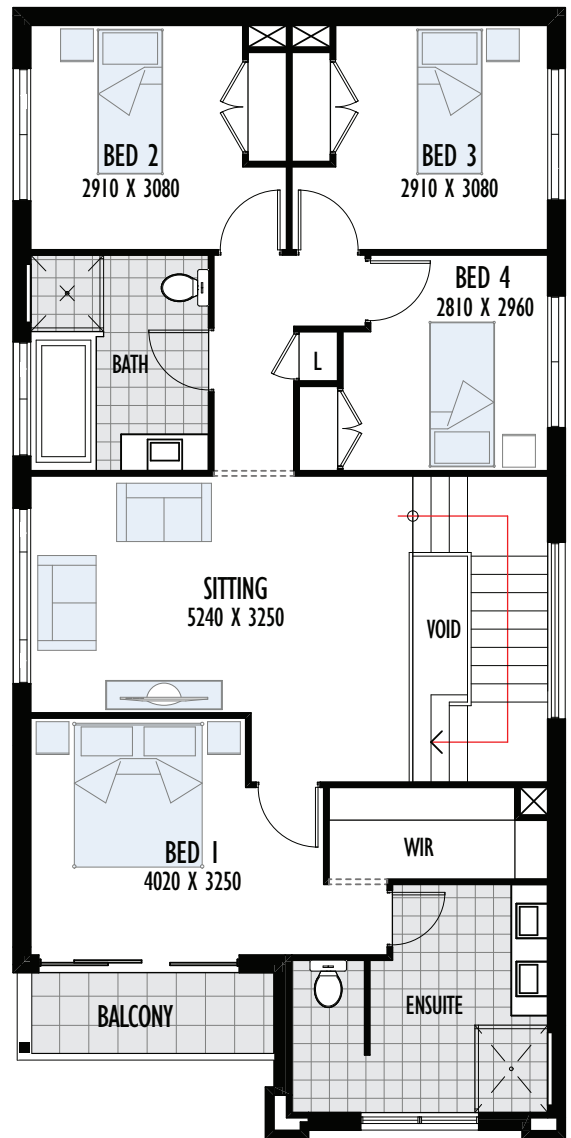
View this home design at our new Box Hill display home.

A Nice way to live

Birchgrove 27



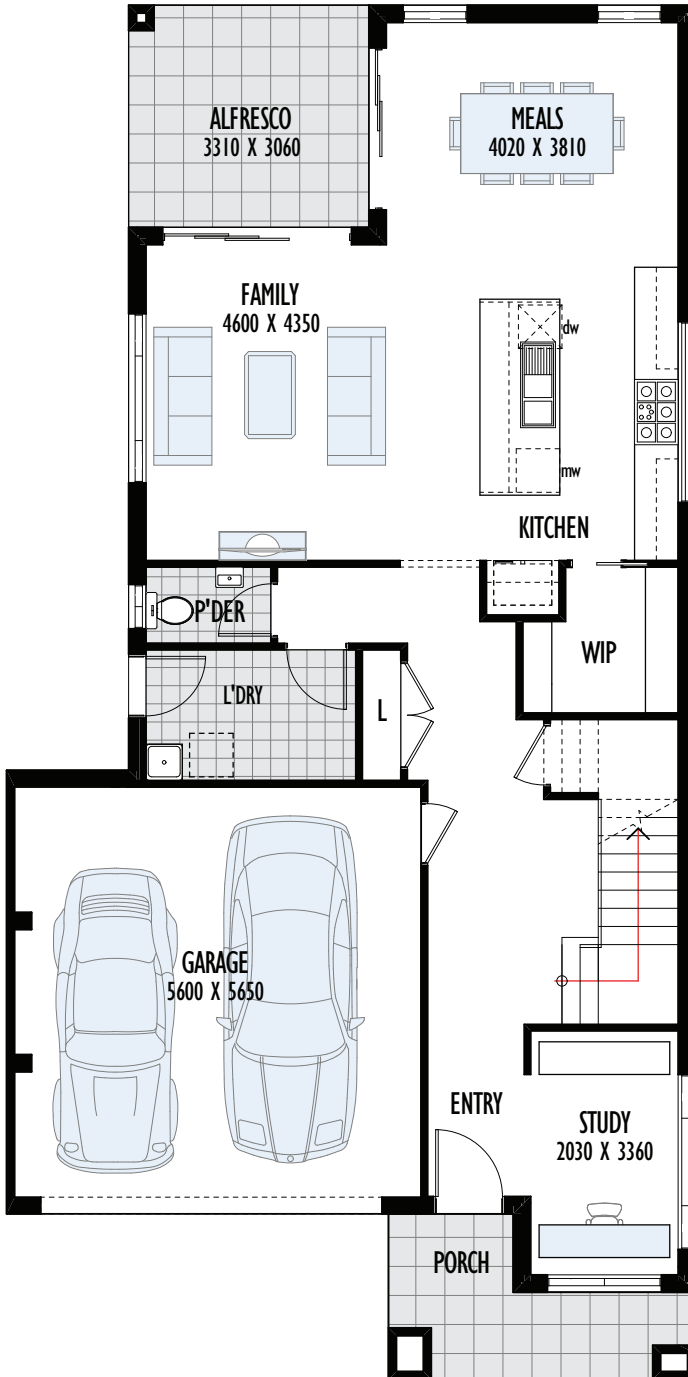
Ground Floor



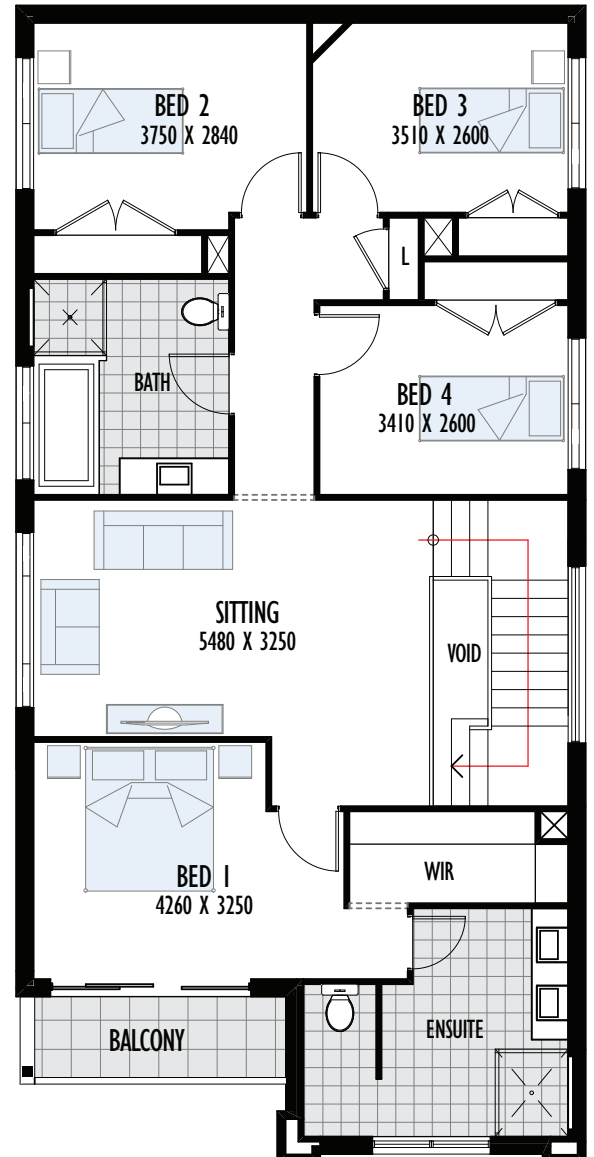
First Floor

Ground Floor Area	92.61m ²	Balcony	4.23m ²	Minimum block width (zero)	10.4m
First Floor Area	108.98m ²	Total	255.9m ² /27.54sq	Minimum block width (conventional)	11.4m
Porch	6.79m ²	Width	9.37m		
Garage	33.91m ²	Depth	18.45m		
Alfresco	9.38m ²				

Birchgrove 29



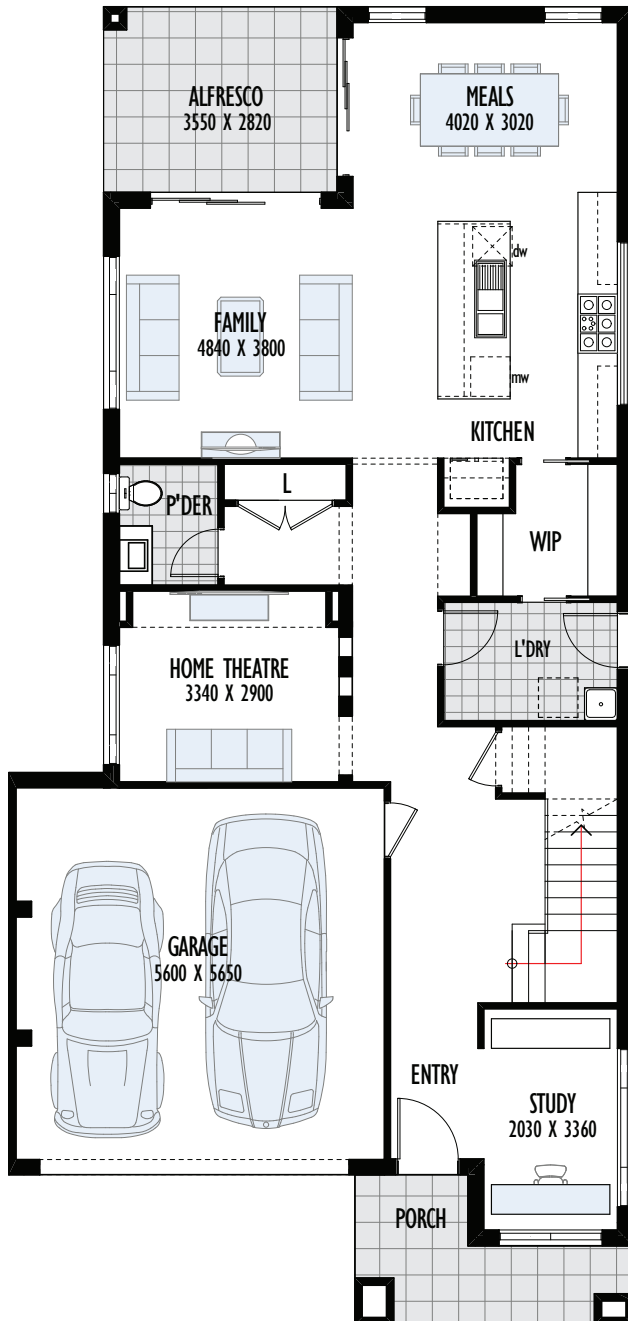
Ground Floor



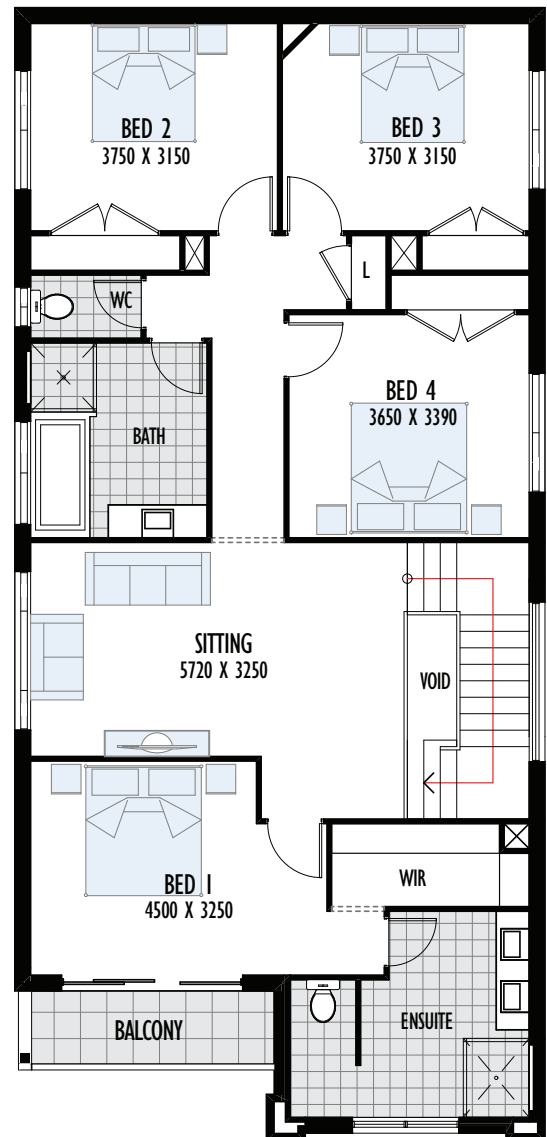
First Floor

Ground Floor Area	98.92m ²	Balcony	4.37m ²	Minimum block width (zero)	10.5m
First Floor Area	115.23m ²	Total	269.49m ² /29sq	Minimum block width (conventional)	11.5m
Porch	6.93m ²	Width	9.49m		
Garage	33.91m ²	Depth	18.93m		
Alfresco	10.13m ²				

Birchgrove 31



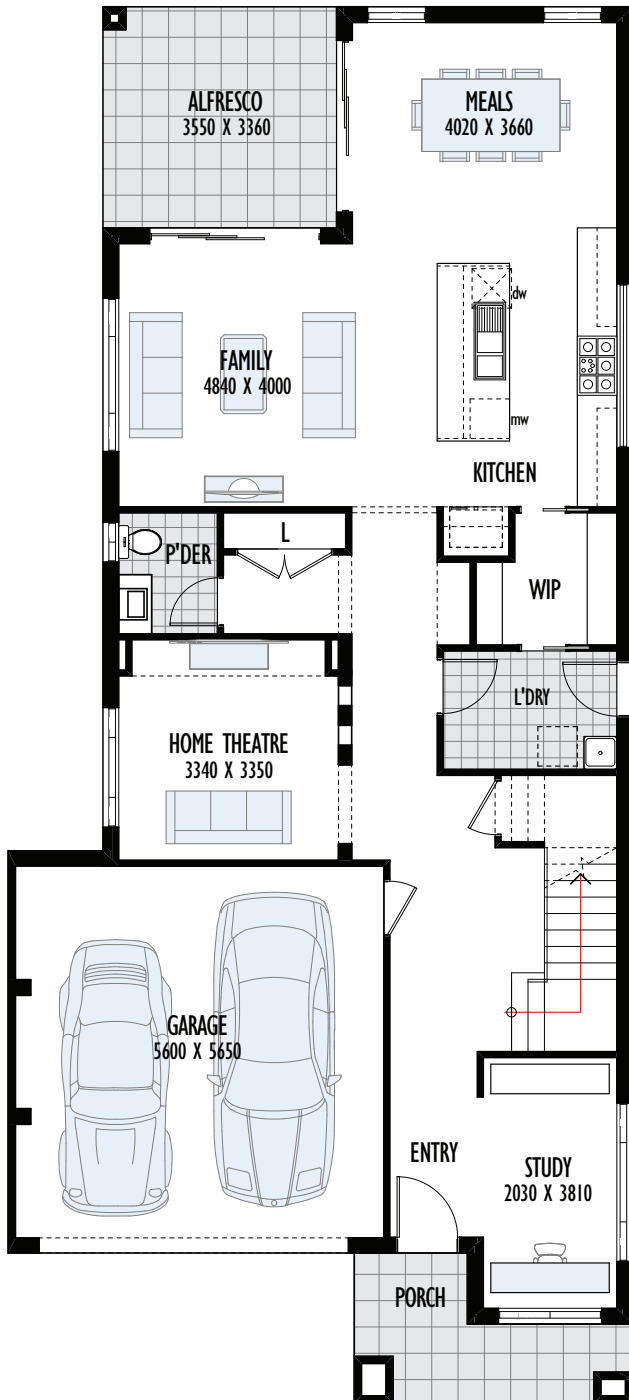
Ground Floor



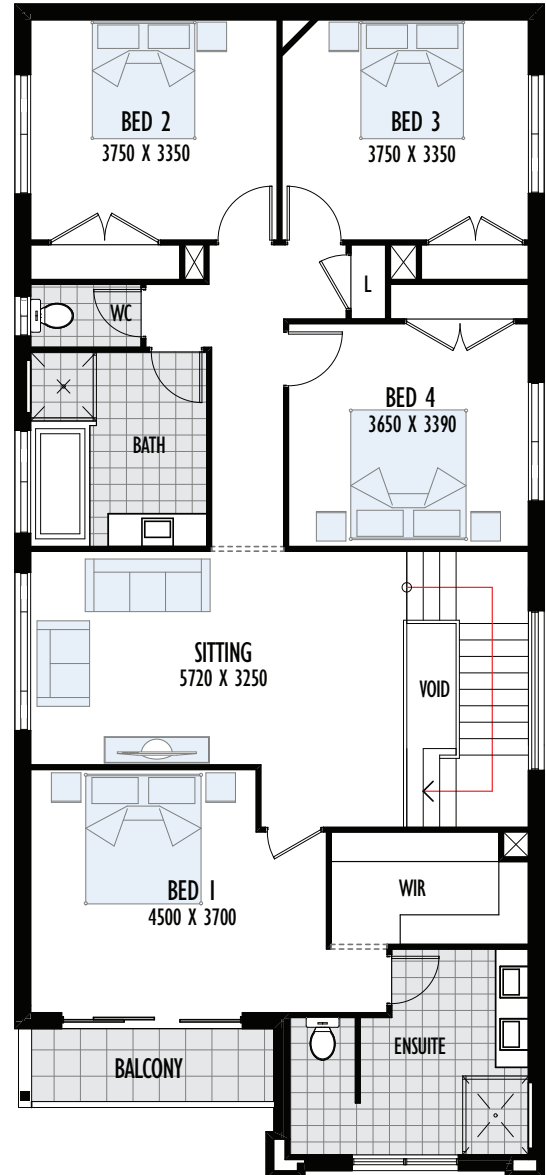
First Floor

Ground Floor Area	110.48m ²	Balcony	4.66m ²	Minimum block width (zero)	10.5m
First Floor Area	129.27m ²	Total	295.26m ² /31.78sq	Minimum block width (conventional)	11.5m
Porch	6.93m ²	Width	9.49m		
Garage	33.91m ²	Depth	20.03m		
Alfresco	10.01m ²				

Birchgrove 33



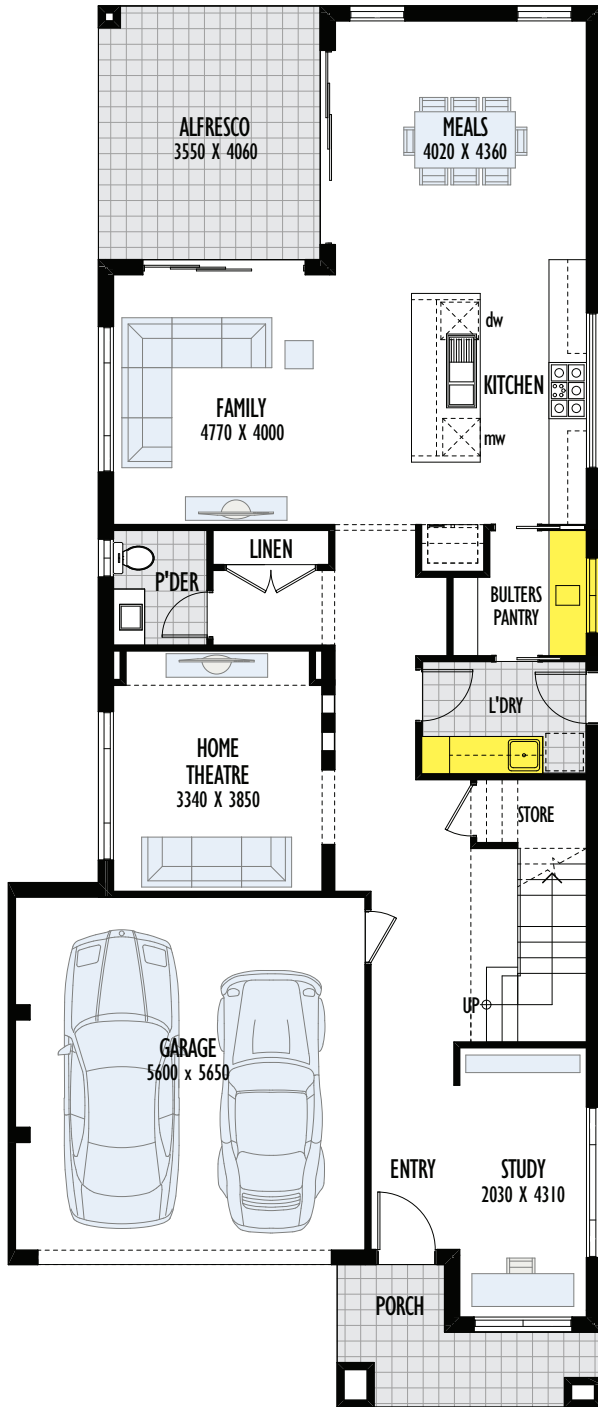
Ground Floor



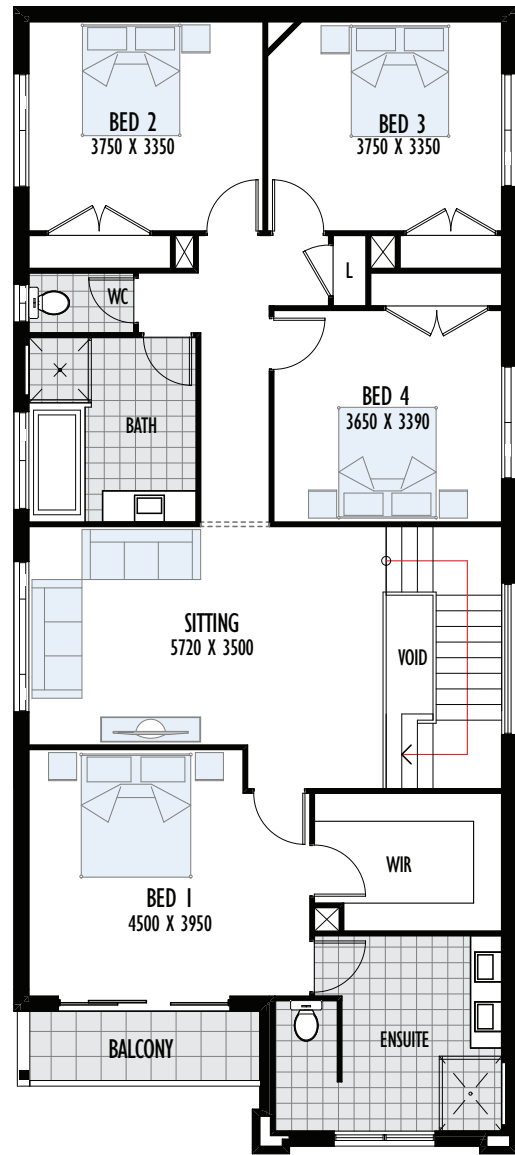
First Floor

Ground Floor Area	118.14m ²	Balcony	4.66m ²	Minimum block width (zero)	10.5m
First Floor Area	134m ²	Total	309.57m ² /33.32sq	Minimum block width (conventional)	11.5m
Porch	6.93m ²	Width	9.49m		
Garage	33.91m ²	Depth	21.22m		
Alfresco	11.93m ²				

Birchgrove 35



Ground Floor

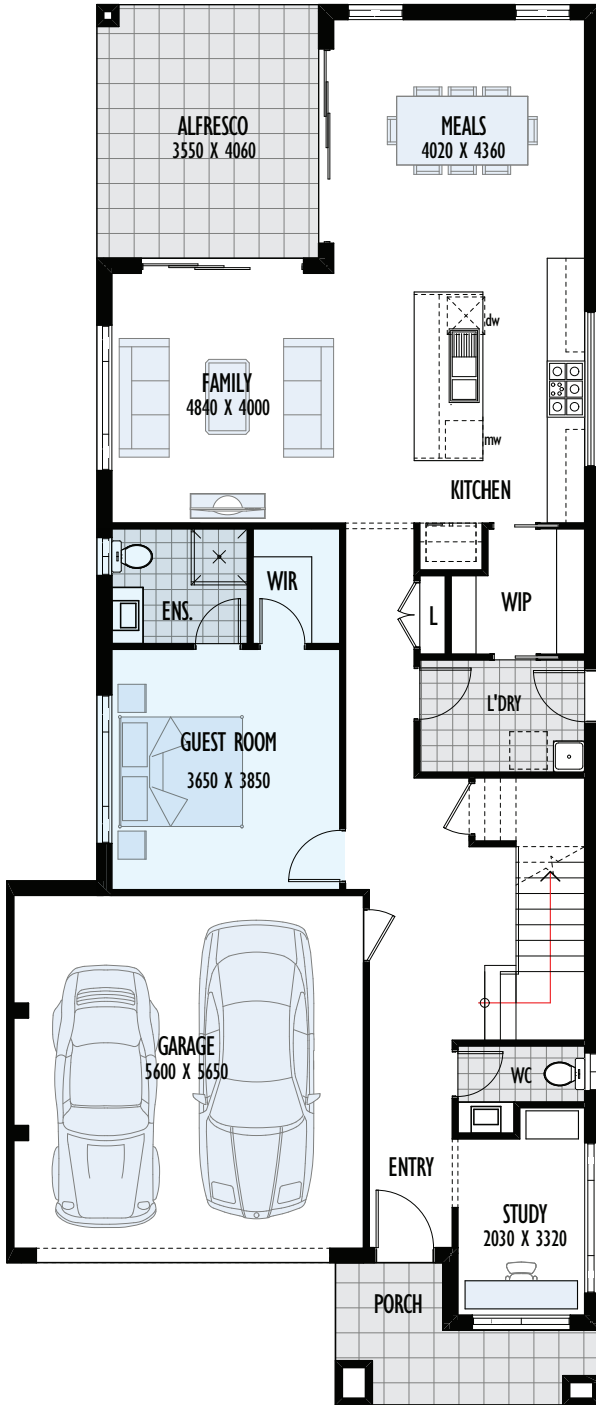


First Floor

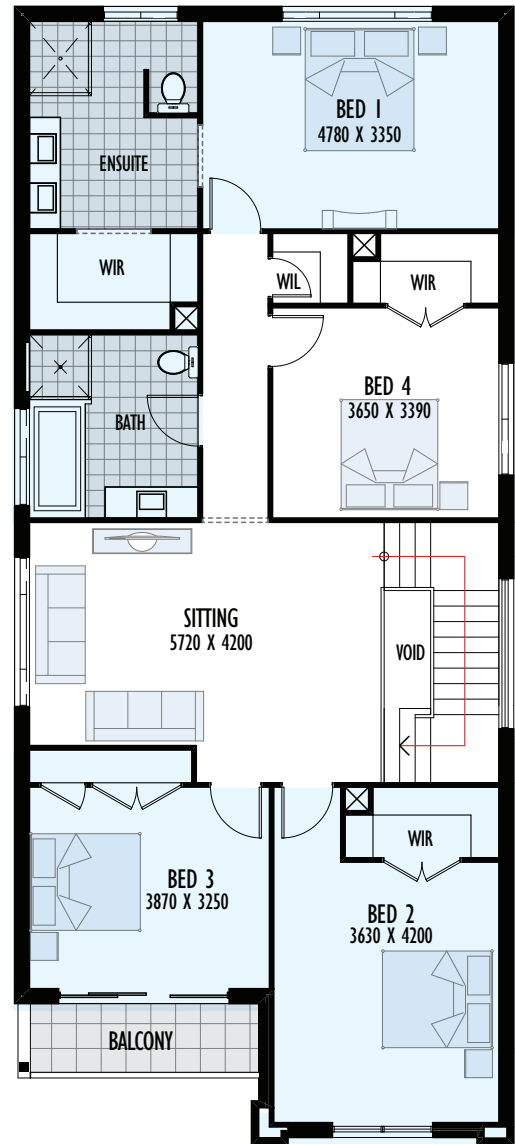
Ground Floor Area	125.32m ²	Balcony	4.66m ²	Minimum block width (zero)	10.5m
First Floor Area	138.53m ²	Total	323.7m ² /34.84sq	Minimum block width (conventional)	11.5m
Porch	6.93m ²	Width	9.49m		
Garage	33.91m ²	Depth	22.42m		
Alfresco	14.41m ²				

Birchgrove 35

Guest Room – Bedroom 1 to rear



Ground floor with guest room



First floor with Bedroom 1 to rear – All in one bathroom



Birchgrove Facade Options



Mayfair Facade



Classic Facade



Veron Facade



Tivoli Facade



Hastings Facade



ON DISPLAY

**HOMEWORLD
BOX HILL**

Gittel Street, Box Hill
OPEN 7 DAYS 10am to 5pm



GREAT SERVICE



FAST APPROVAL TIME



DESIGN FLEXIBILITY



VALUE FOR MONEY



HIGH QUALITY STANDARD



EXPERIENCE

provincialhomes.com.au



**Proven
Professional
Provincial Homes**

