

# Arive series

*You're here*



[Check out the Features](#)  
[Check out the Price](#)  
[Check out the Space](#)

**Proven  
Professional  
Provincial Homes**



# Check out the Features Price Space

**Arive** series  
*You're here*





Provincial Homes new Arrive Series offers luxury and style for an affordable price. The new designs are developed to make the most of every square metre.

Contemporary designs and flexible floor plans tick all the boxes for comfortable, relaxed living perfectly suited to families.

# Single Storey Homes

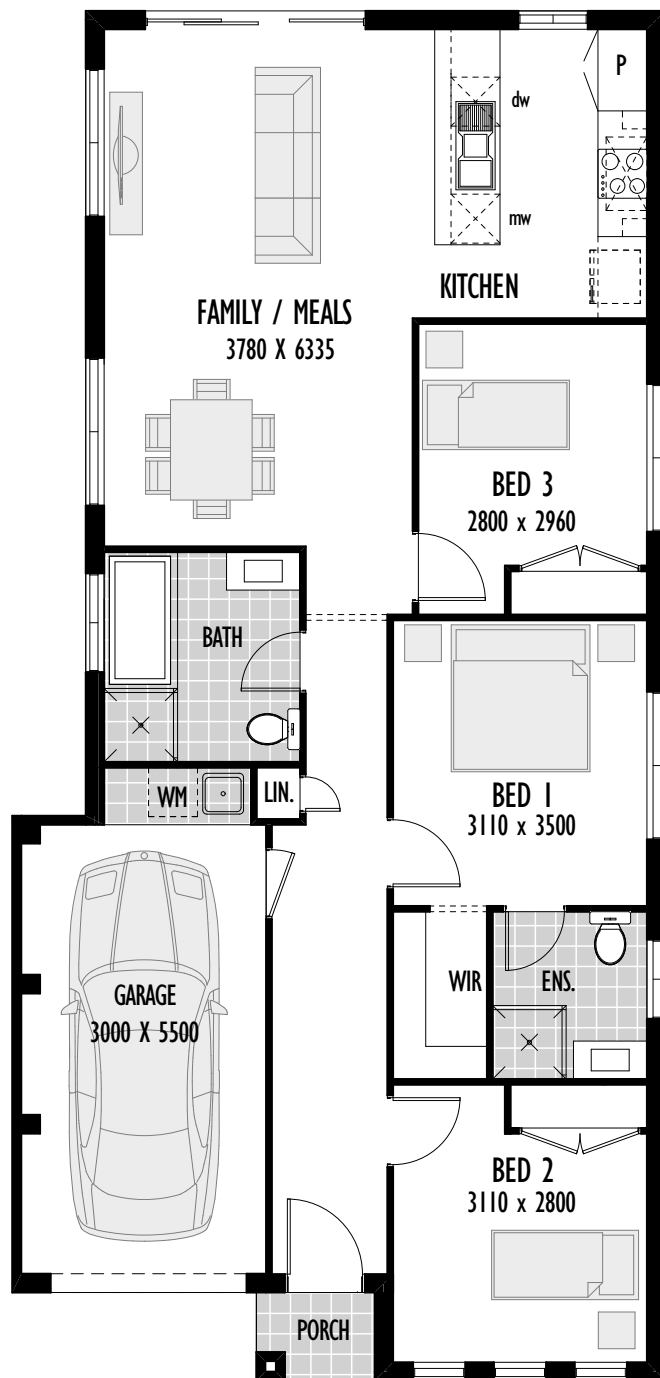




# Accord

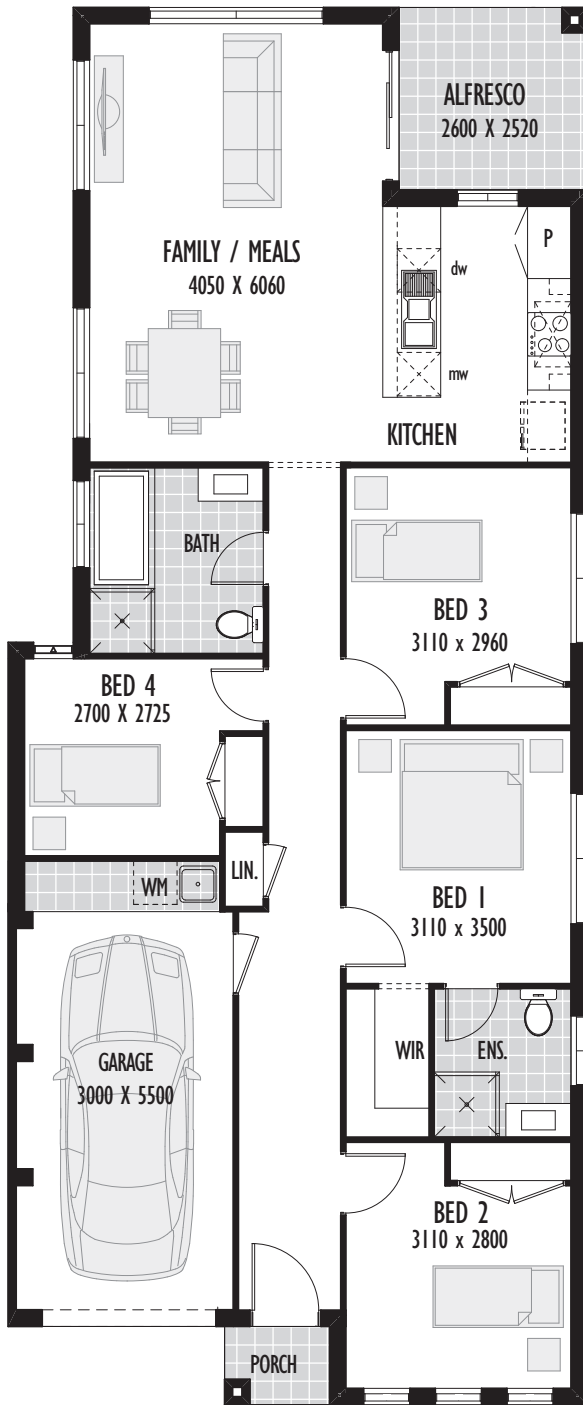


## Accord 13

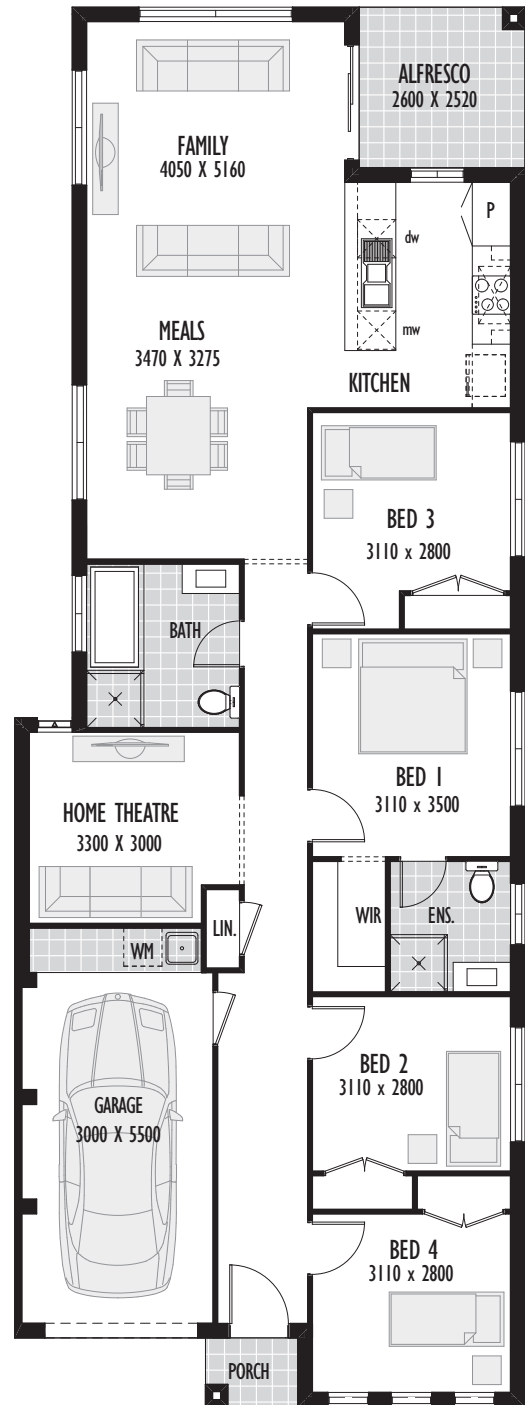


Floor Area	102.65m <sup>2</sup>
Garage	17.92m <sup>2</sup>
Porch	1.57m <sup>2</sup>
Total	122.14m <sup>2</sup> /13.14sq
Width	8.0m
Depth	16.78m
Min block width	9m

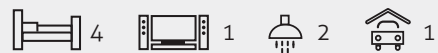
# Accord 15



# Accord 17



Floor Area	117.34m <sup>2</sup>
Garage	17.82m <sup>2</sup>
Alfresco	6.55m <sup>2</sup>
Porch	1.57m <sup>2</sup>
Total	143.28m <sup>2</sup> /15.42sq
Width	8.0m
Depth	19.30m
Min block width	9m



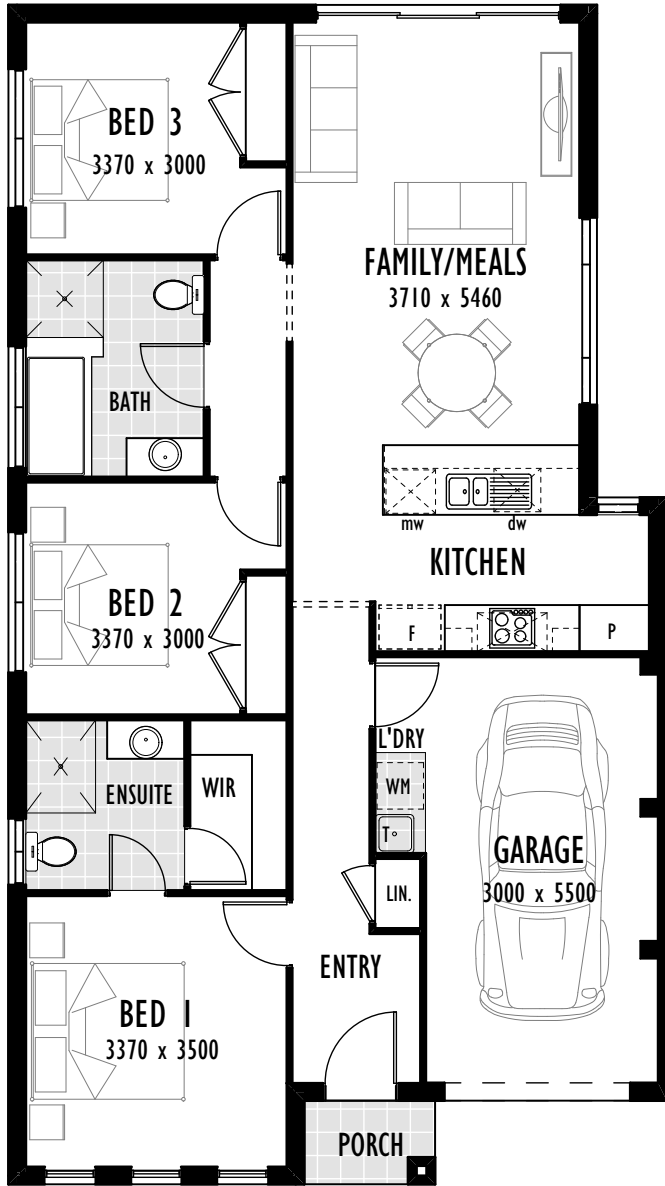
Floor Area	136.40m <sup>2</sup>
Garage	17.82m <sup>2</sup>
Alfresco	6.55m <sup>2</sup>
Porch	1.57m <sup>2</sup>
Total	162.34m <sup>2</sup> /17.47sq
Width	8.0m
Depth	21.95m
Min block width	9m

# Anfield

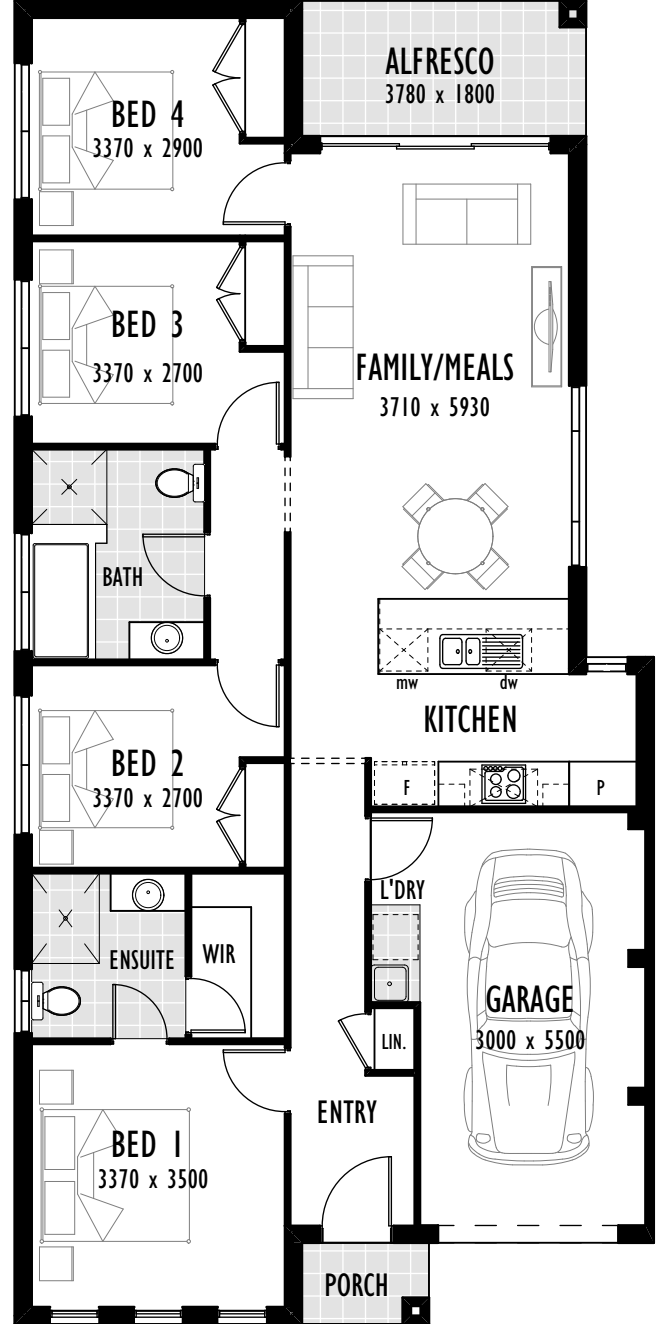




# Anfield 13



# Anfield 15



Floor Area	99.20m <sup>2</sup>
Garage	19.48m <sup>2</sup>
Porch	1.83m <sup>2</sup>
Total	120.56m <sup>2</sup> /12.97sq
Width	8.5m
Depth	15.23m

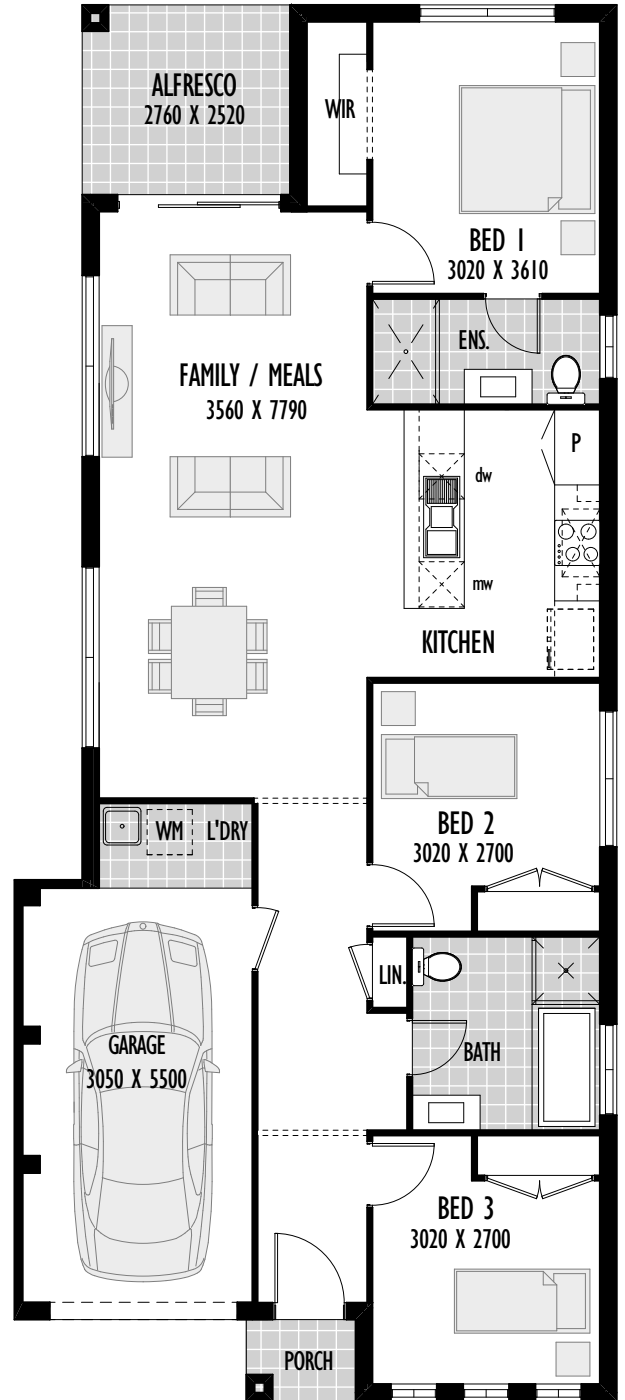


Floor Area	110.41m <sup>2</sup>
Garage	19.48m <sup>2</sup>
Alfresco	6.80m <sup>2</sup>
Porch	1.83m <sup>2</sup>
Total	138.52m <sup>2</sup> /14.91sq
Width	8.5m
Depth	17.6m

# Volante

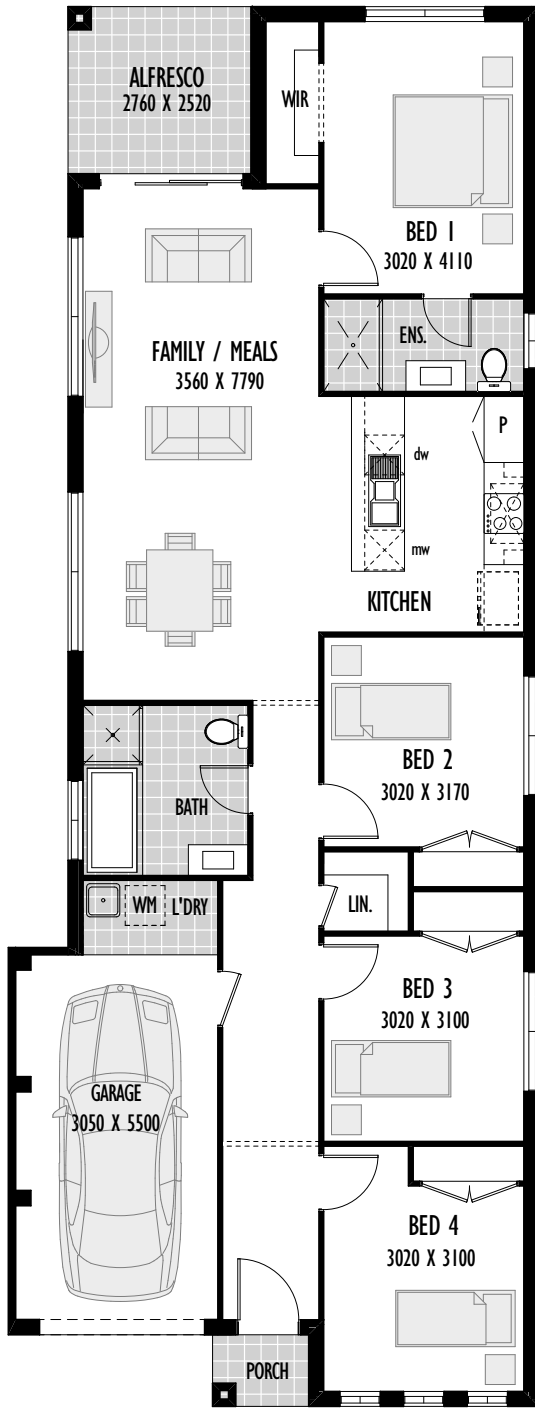


## Volante 14

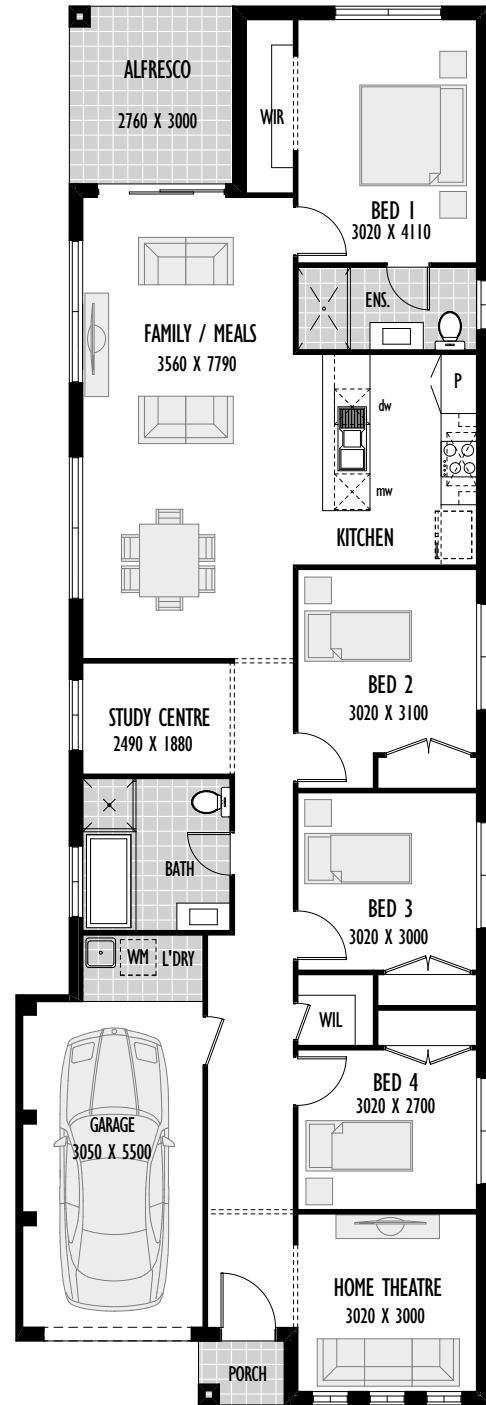


Floor Area	107.81m <sup>2</sup>
Garage	18.21m <sup>2</sup>
Alfresco	6.96m <sup>2</sup>
Porch	1.57m <sup>2</sup>
Total	134.55m <sup>2</sup> /14.48sq
Width	8.0m
Depth	18.54m
Min block width	9m

# Volante 16



# Volante 18



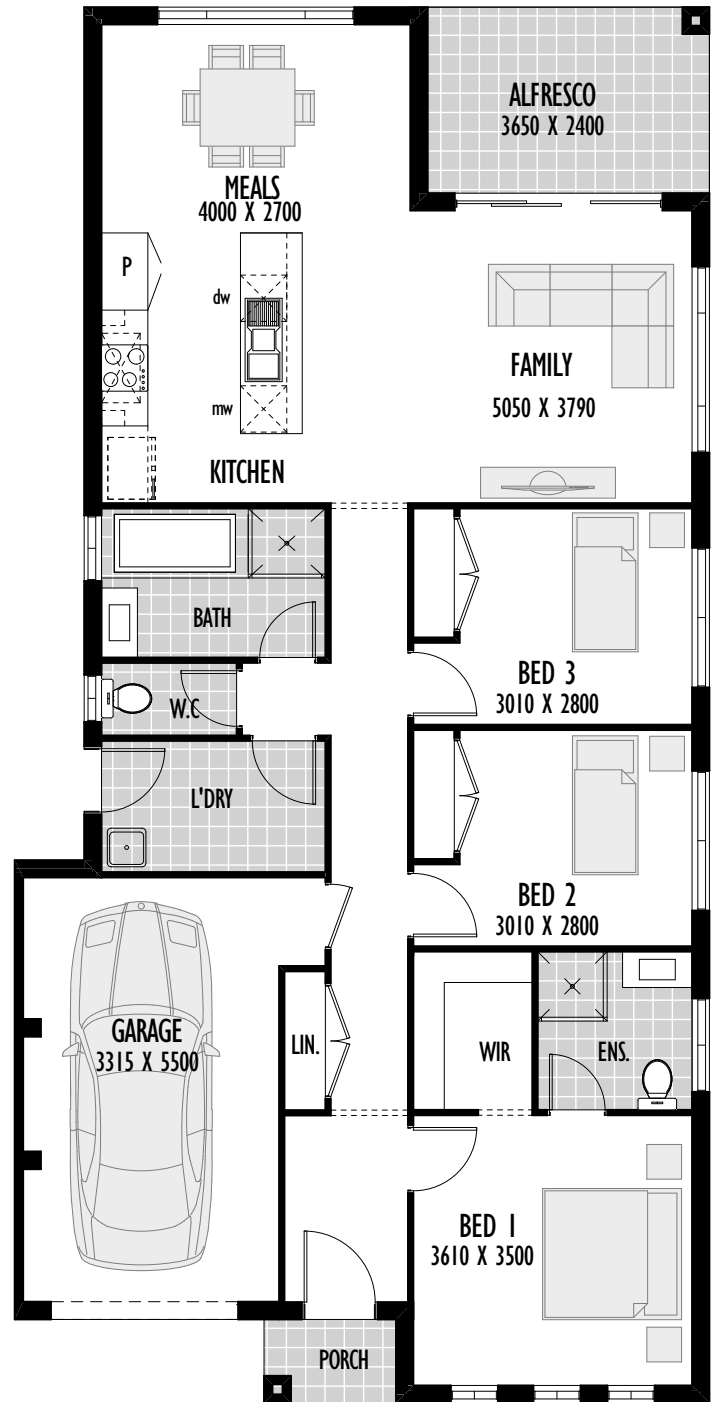
Floor Area	126.06m <sup>2</sup>
Garage	18.21m <sup>2</sup>
Alfresco	6.96m <sup>2</sup>
Porch	1.57m <sup>2</sup>
Total	152.80m <sup>2</sup> /16.44sq
Width	8.0m
Depth	21.11m
Min block width	9m



Floor Area	142.48m <sup>2</sup>
Garage	18.21m <sup>2</sup>
Alfresco	8.28m <sup>2</sup>
Porch	1.57m <sup>2</sup>
Total	152.80m <sup>2</sup> /16.44sq
Width	8.0m
Depth	23.61m
Min block width	9m

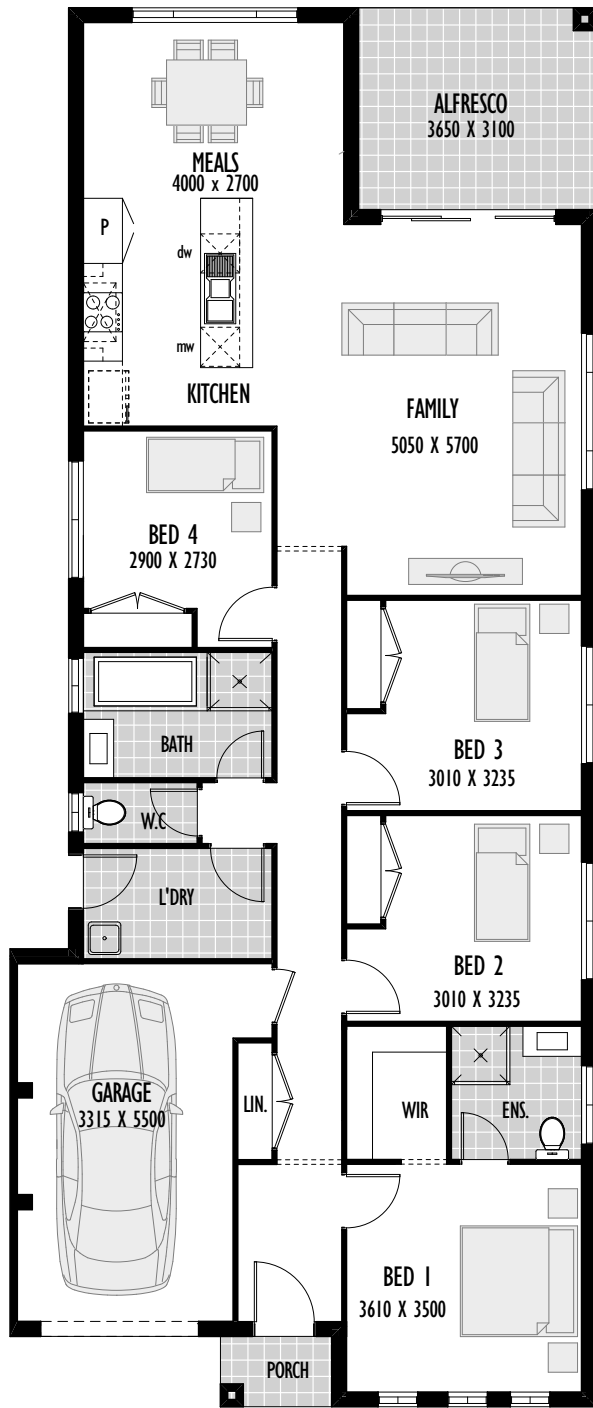
# Shelby

## Shelby 16

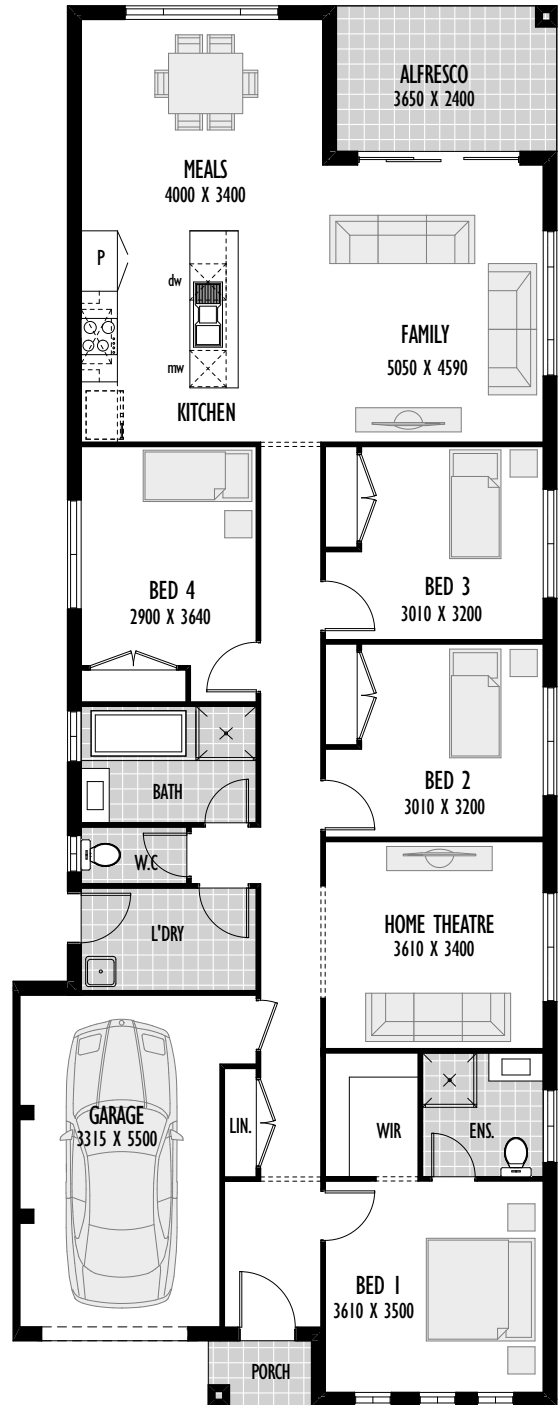


Floor Area	118.15m <sup>2</sup>
Garage	20.50m <sup>2</sup>
Alfresco	8.80m <sup>2</sup>
Porch	1.85m <sup>2</sup>
Total	149.30m <sup>2</sup> /16.07sq
Width	9.0m
Depth	18.08m
Min block width	10m

# Shelby 19



# Shelby 21



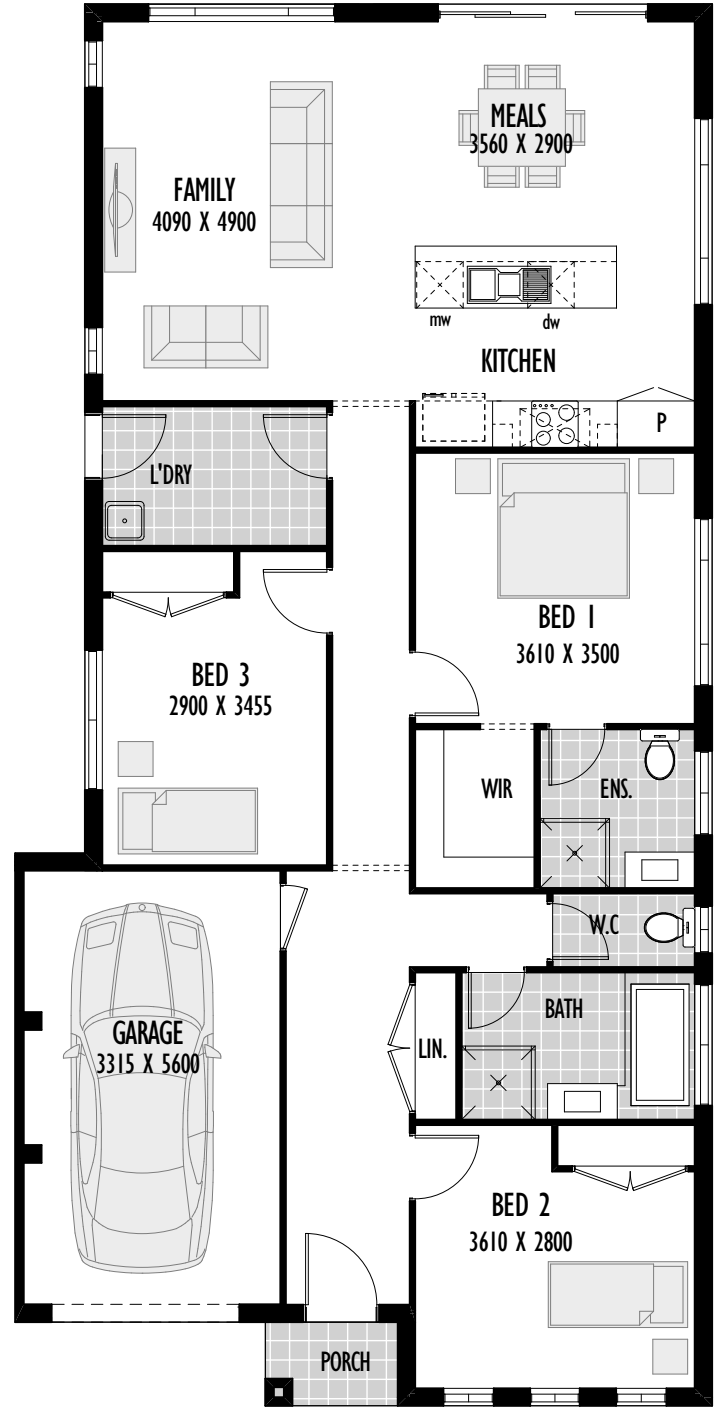
Floor Area	143.17m <sup>2</sup>
Garage	20.50m <sup>2</sup>
Alfresco	11.32m <sup>2</sup>
Porch	1.85m <sup>2</sup>
Total	167.84m <sup>2</sup> /19.03sq
Width	9.0m
Depth	21.48m
Min block width	10m

Floor Area	159.46m <sup>2</sup>
Garage	20.50m <sup>2</sup>
Alfresco	8.80m <sup>2</sup>
Porch	1.85m <sup>2</sup>
Total	190.61m <sup>2</sup> /20.51sq
Width	9.0m
Depth	23.18m
Min block width	10m

# Impala

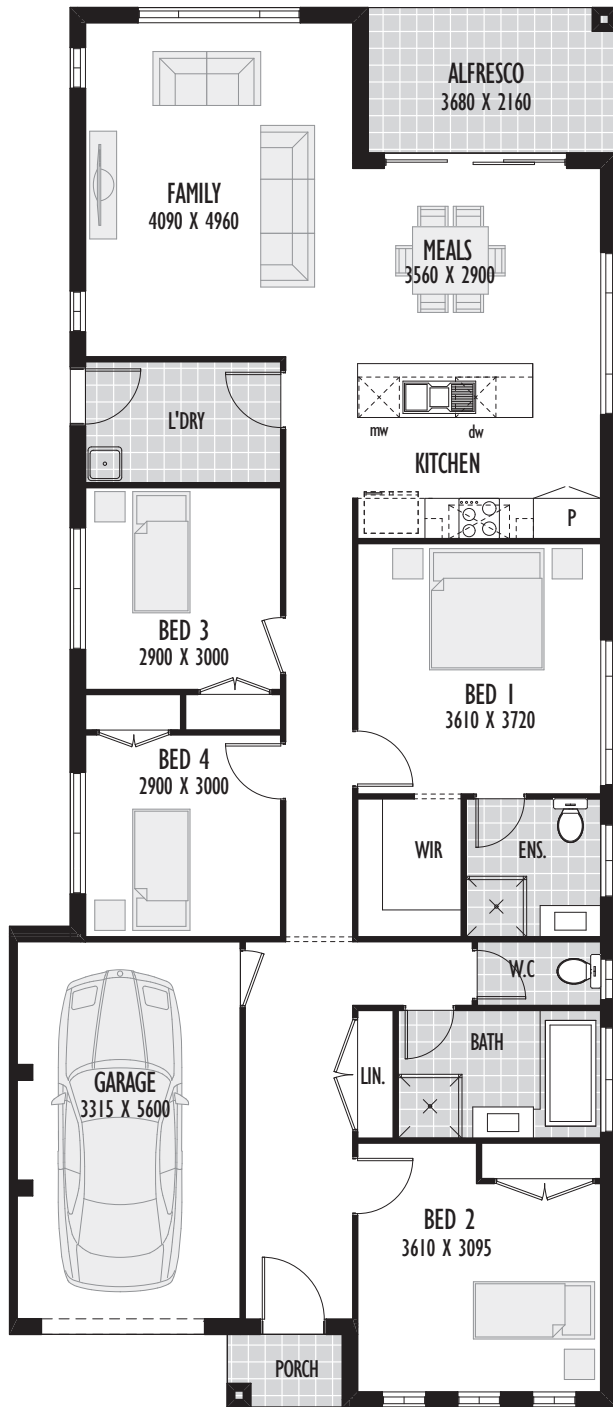


## Impala 16

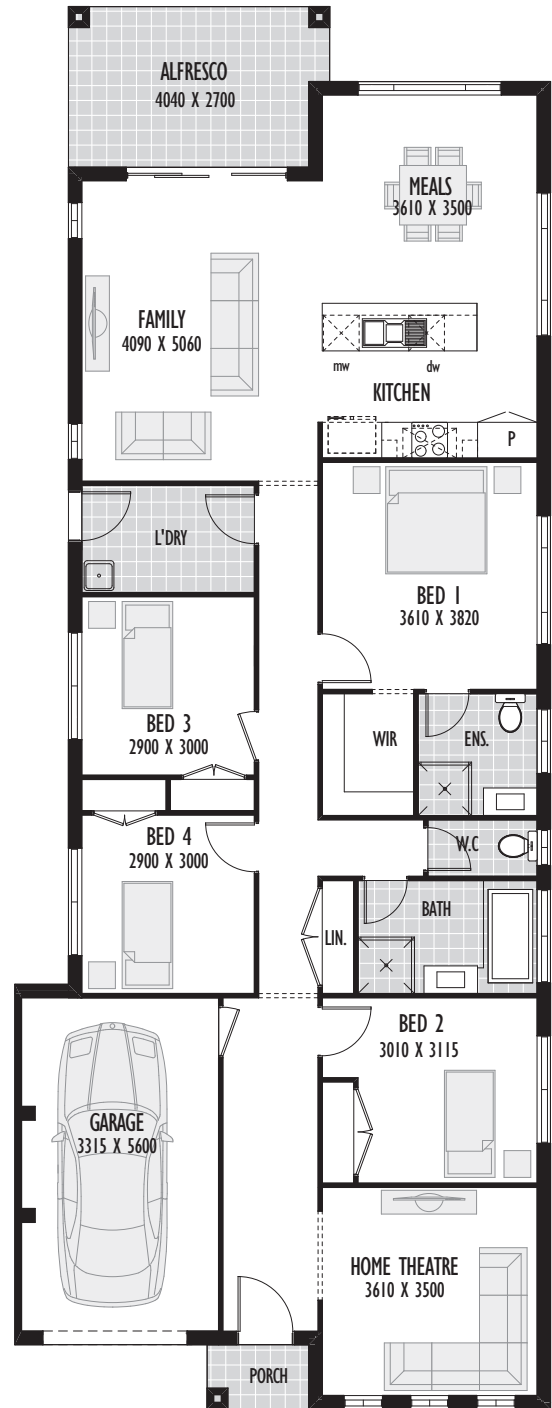


Floor Area	127.53m <sup>2</sup>
Garage	20.17m <sup>2</sup>
Porch	1.85m <sup>2</sup>
Total	149.55m <sup>2</sup> /16.09sq
Width	9.0m
Depth	18.10m
Min block width	10m

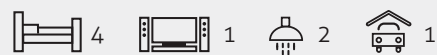
# Impala 18



# Impala 20



Floor Area	141.24m <sup>2</sup>
Garage	20.17m <sup>2</sup>
Alfresco	7.95m <sup>2</sup>
Porch	1.85m <sup>2</sup>
Total	171.21m <sup>2</sup> /18.42sq
Width	9.0m
Depth	20.775m
Min block width	10m

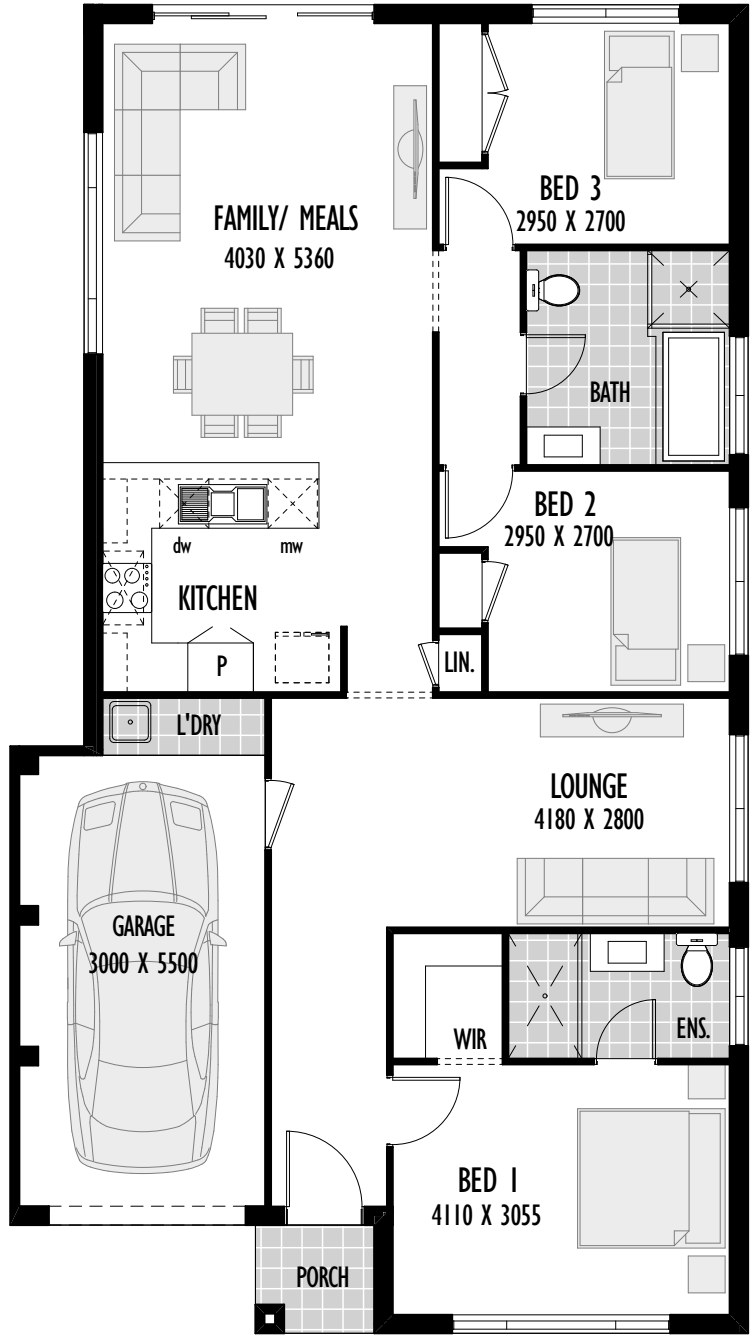


Floor Area	155.77m <sup>2</sup>
Garage	20.17m <sup>2</sup>
Alfresco	11.35m <sup>2</sup>
Porch	1.85m <sup>2</sup>
Total	189.41m <sup>2</sup> /20.35sq
Width	9.0m
Depth	23.565m
Min block width	10m

# Verada



## Verada 14

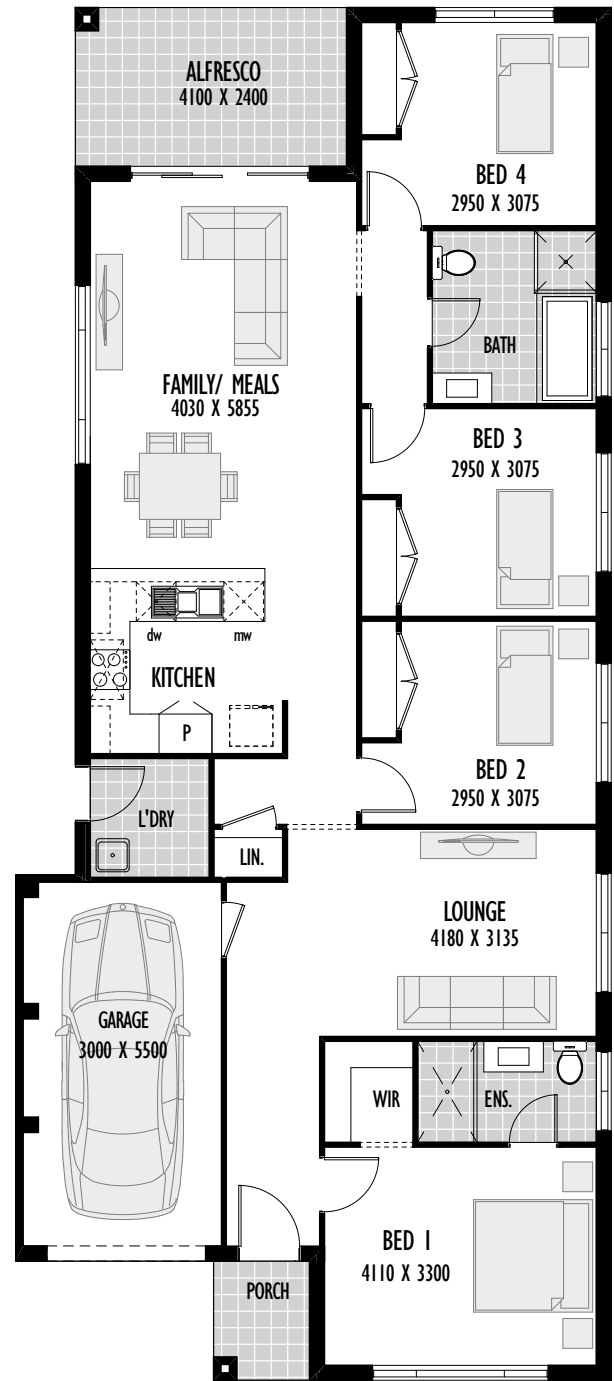
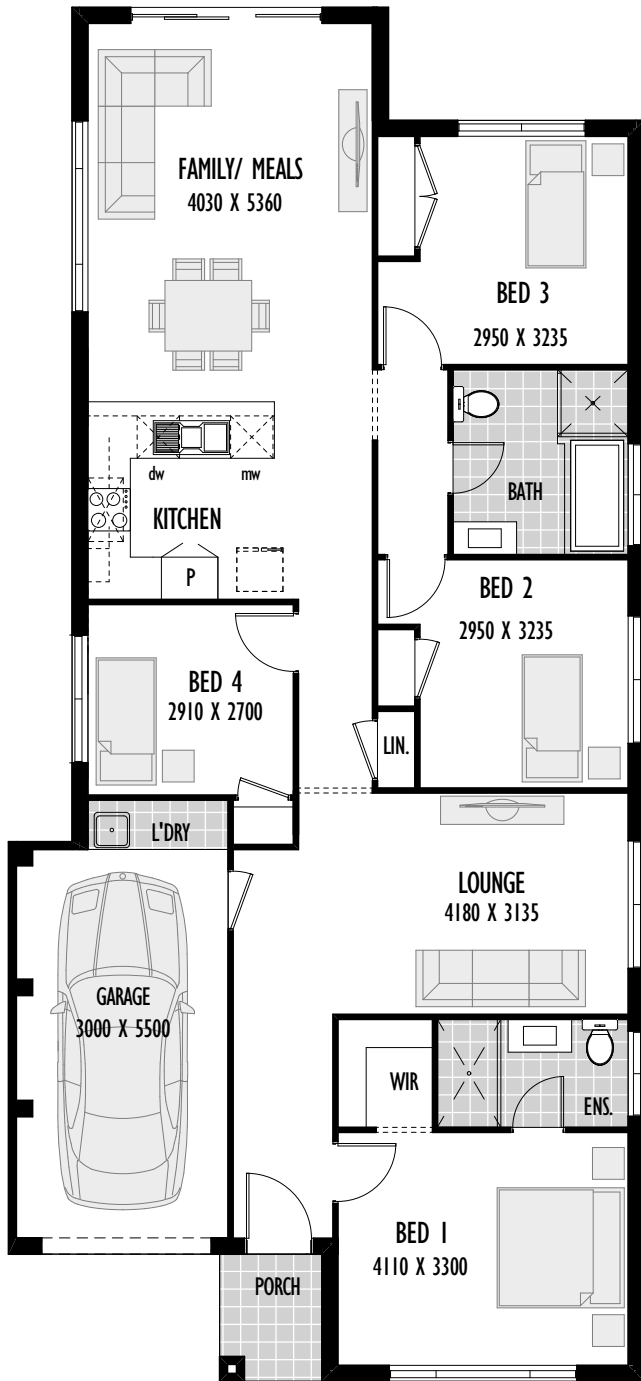


Floor Area	114.73m <sup>2</sup>
Garage	17.92m <sup>2</sup>
Porch	1.91m <sup>2</sup>
Total	134.56m <sup>2</sup> /14.48sq
Width	9.0m
Depth	16.305m
Min block width	10m



# Verada 16

# Verada 18



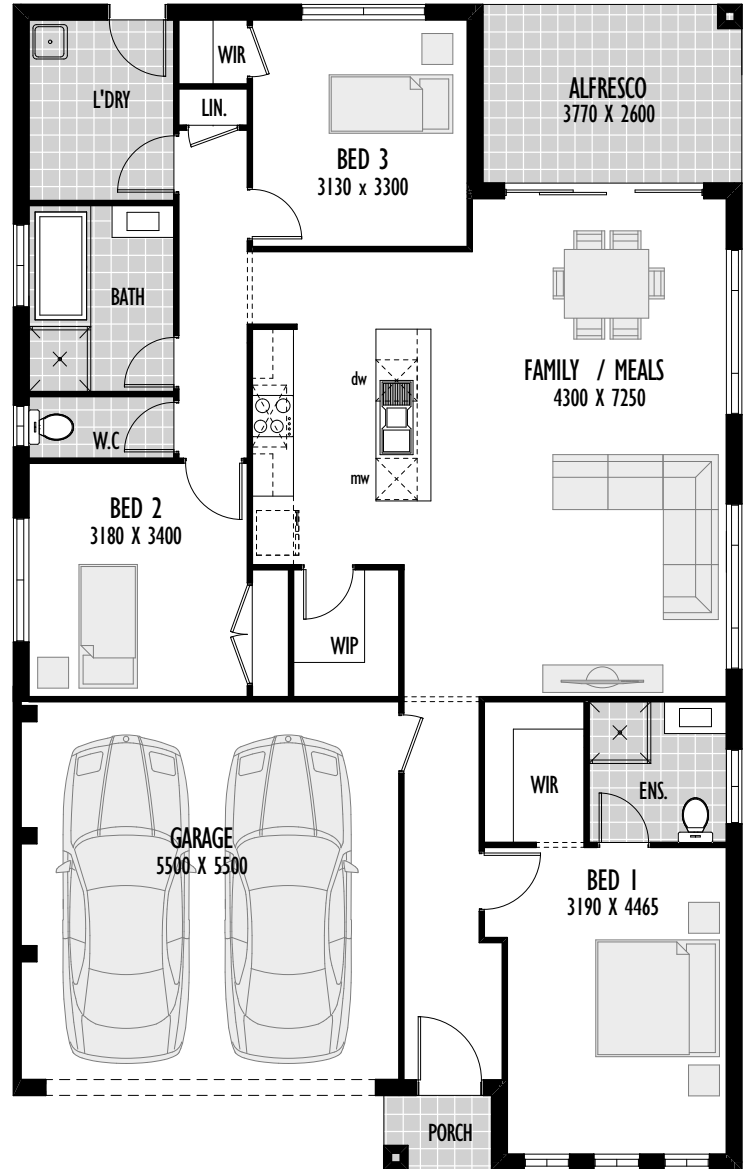
Floor Area	132.76m <sup>2</sup>
Garage	17.92m <sup>2</sup>
Porch	2.61m <sup>2</sup>
Total	153.29m <sup>2</sup> /16.50sq
Width	9.0m
Depth	19.455m
Min block width	10m

Floor Area	139.20m <sup>2</sup>
Garage	17.92m <sup>2</sup>
Alfresco	9.72m <sup>2</sup>
Porch	2.61m <sup>2</sup>
Total	169.45m <sup>2</sup> /18.24sq
Width	9.0m
Depth	20.750m
Min block width	10m

# Ashton

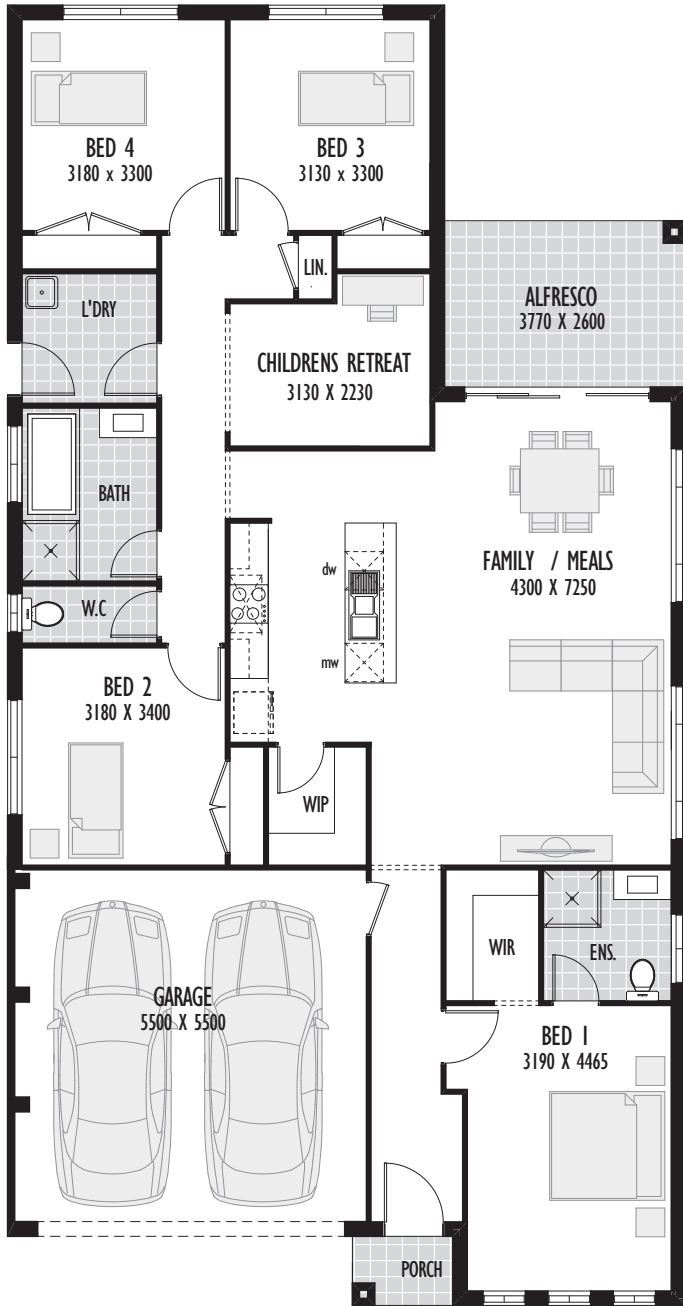


## Ashton 19

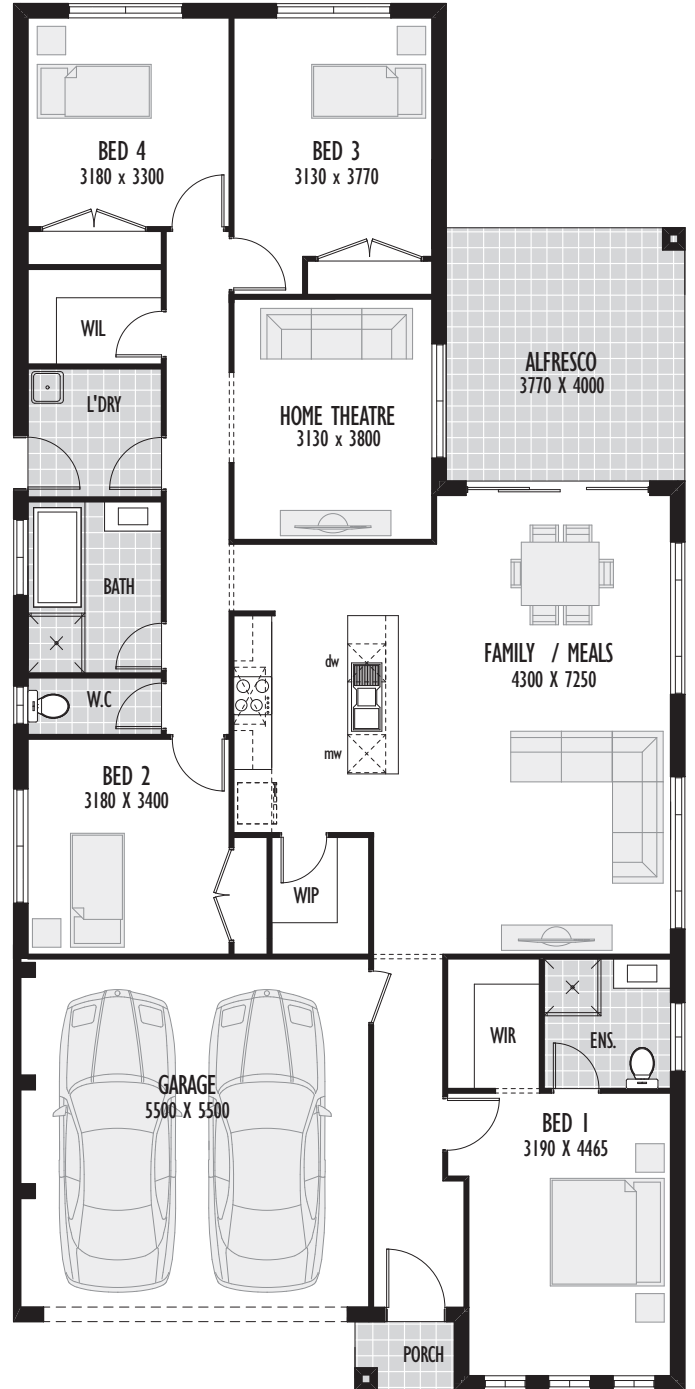


Floor Area	130.26m <sup>2</sup>
Garage	32.15m <sup>2</sup>
Alfresco	9.80m <sup>2</sup>
Porch	1.70m <sup>2</sup>
Total	173.91m <sup>2</sup> /18.72sq
Width	10.60m
Depth	16.955m
Min block width	12.5m

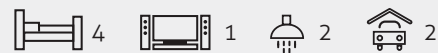
# Ashton 21



# Ashton 23



Floor Area	153.28m <sup>2</sup>
Garage	32.15m <sup>2</sup>
Alfresco	9.80m <sup>2</sup>
Porch	1.70m <sup>2</sup>
Total	196.93m <sup>2</sup> /21.19sq
Width	10.60m
Depth	20.325m
Min block width	12.5m

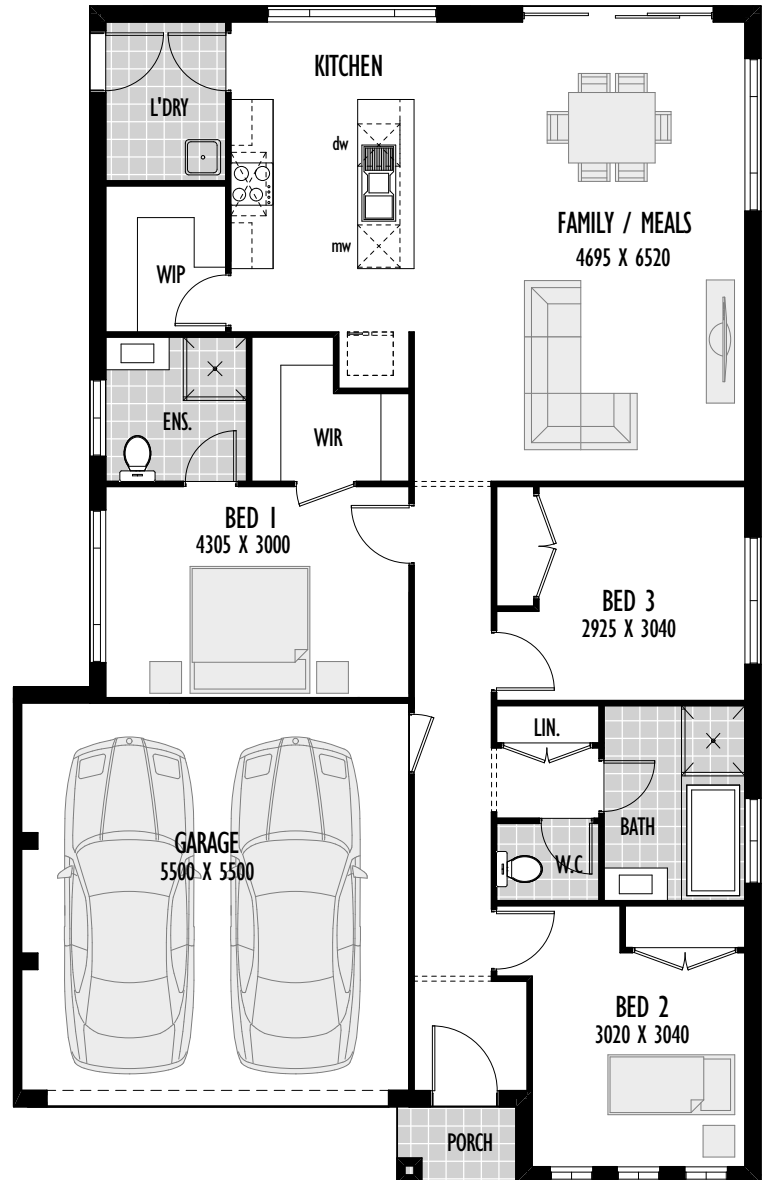


Floor Area	164.00m <sup>2</sup>
Garage	32.15m <sup>2</sup>
Alfresco	15.08m <sup>2</sup>
Porch	1.70m <sup>2</sup>
Total	212.93m <sup>2</sup> /22.92sq
Width	10.60m
Depth	21.895m
Min block width	12.5m

# Evora

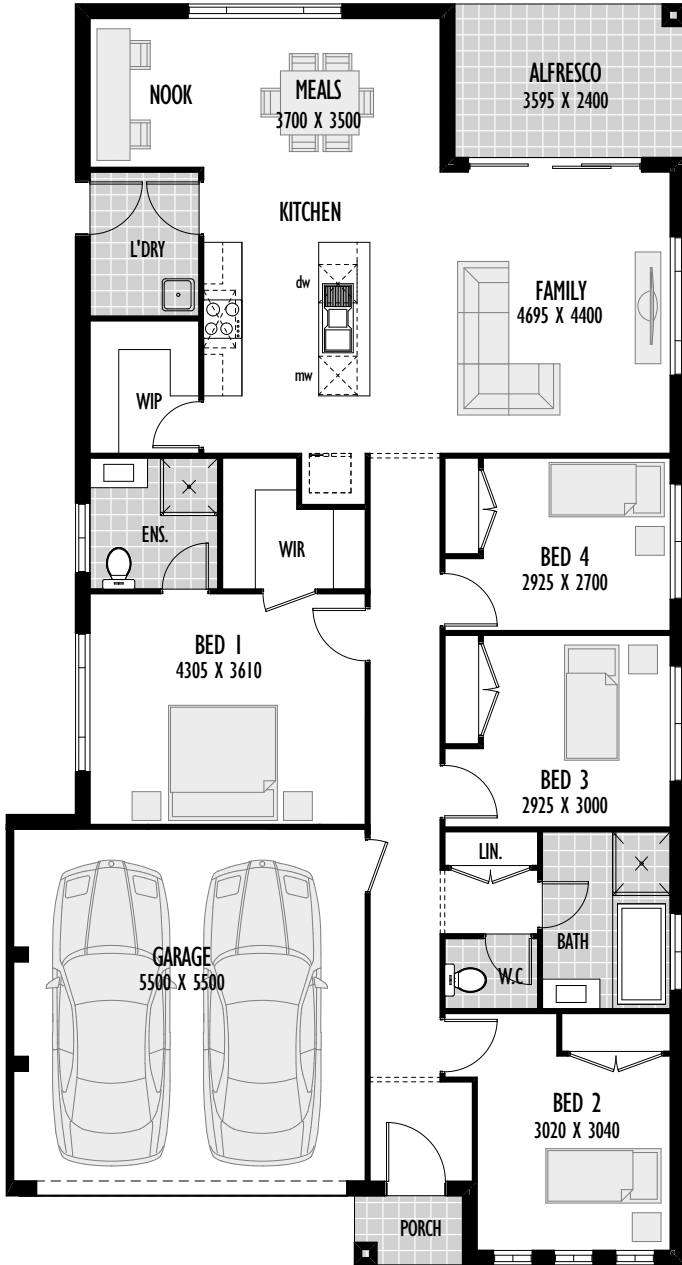


## Evora 17

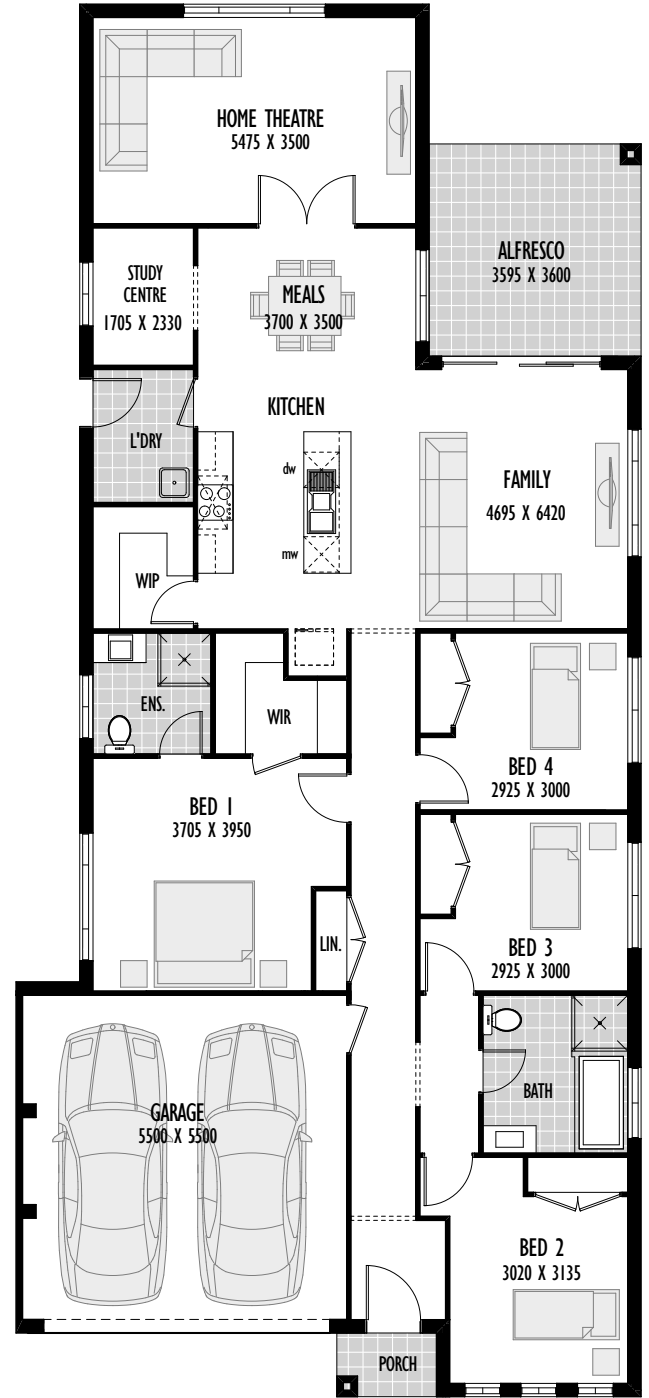


Floor Area	126.47m <sup>2</sup>
Garage	32.36m <sup>2</sup>
Porch	1.83m <sup>2</sup>
Total	160.66m <sup>2</sup> /17.29sq
Width	10.60m
Depth	16.695m
Min block width	12.5m

# Evora 20



# Evora 23



Floor Area	146.47m <sup>2</sup>
Garage	32.36m <sup>2</sup>
Alfresco	8.63m <sup>2</sup>
Porch	1.83m <sup>2</sup>
Total	189.29m <sup>2</sup> /20.37sq
Width	10.60m
Depth	19.705m
Min block width	12.5m



Floor Area	170.86m <sup>2</sup>
Garage	32.36m <sup>2</sup>
Alfresco	12.94m <sup>2</sup>
Porch	1.83m <sup>2</sup>
Total	217.99m <sup>2</sup> /23.46sq
Width	10.60m
Depth	23.615m
Min block width	12.5m

# Single Storey Facades



**Sonata Facade**



**Avil Facade**



**Accent Facade**



**Astor Facade**



**Lotus Facade**



**Classic Facade**

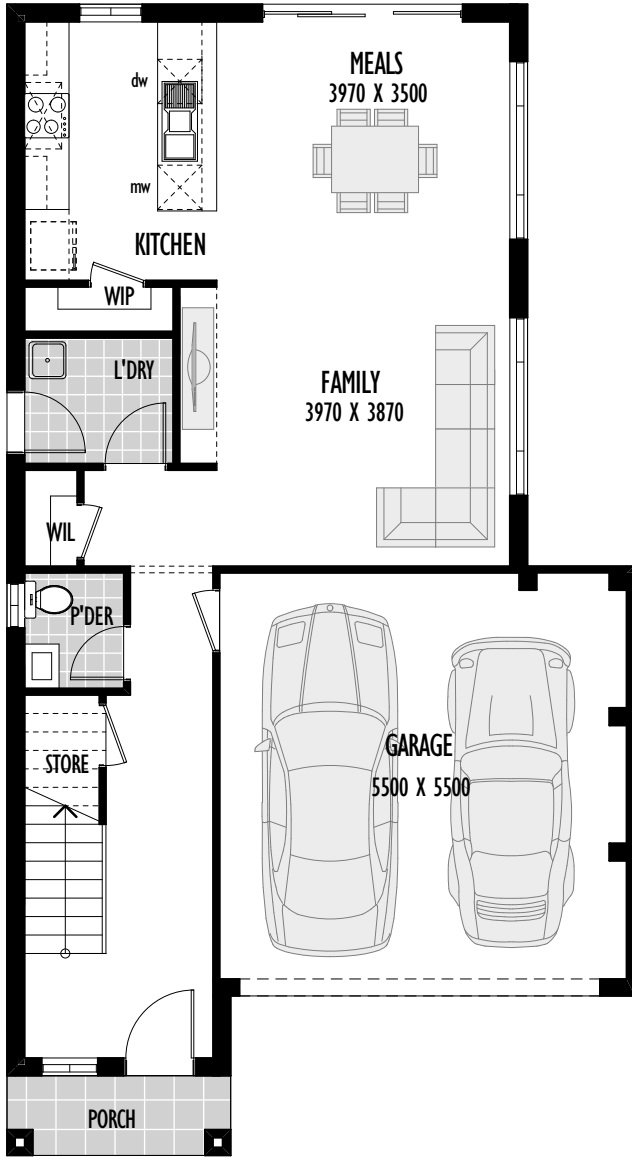
# Double Storey Homes



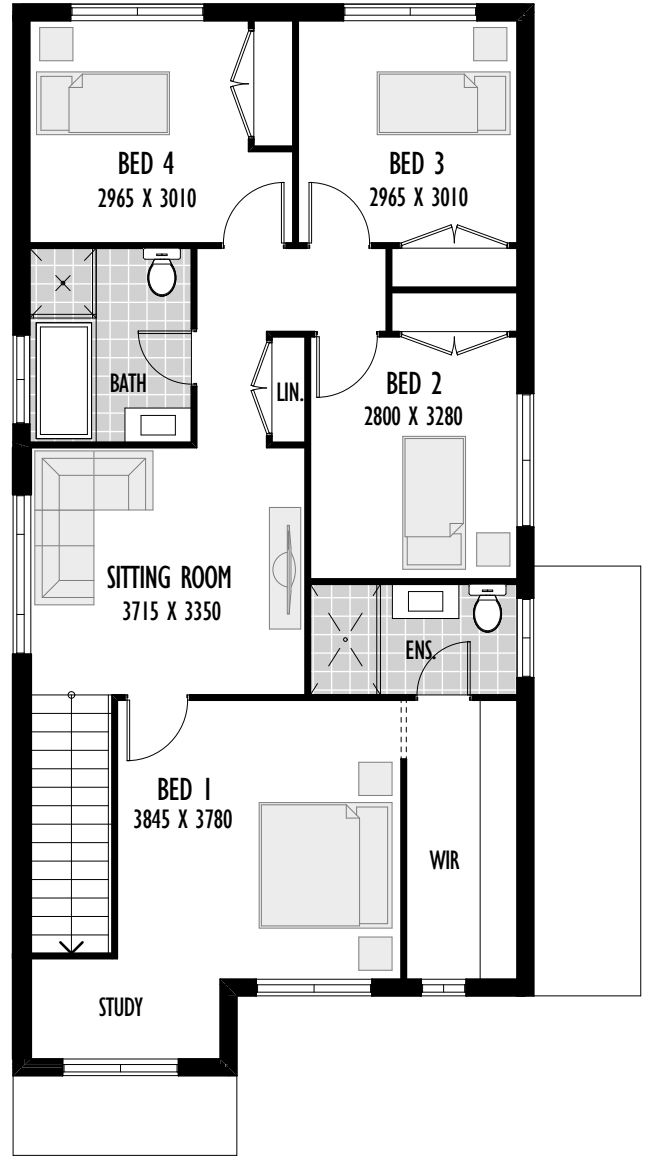




# Chevron 22



Ground floor



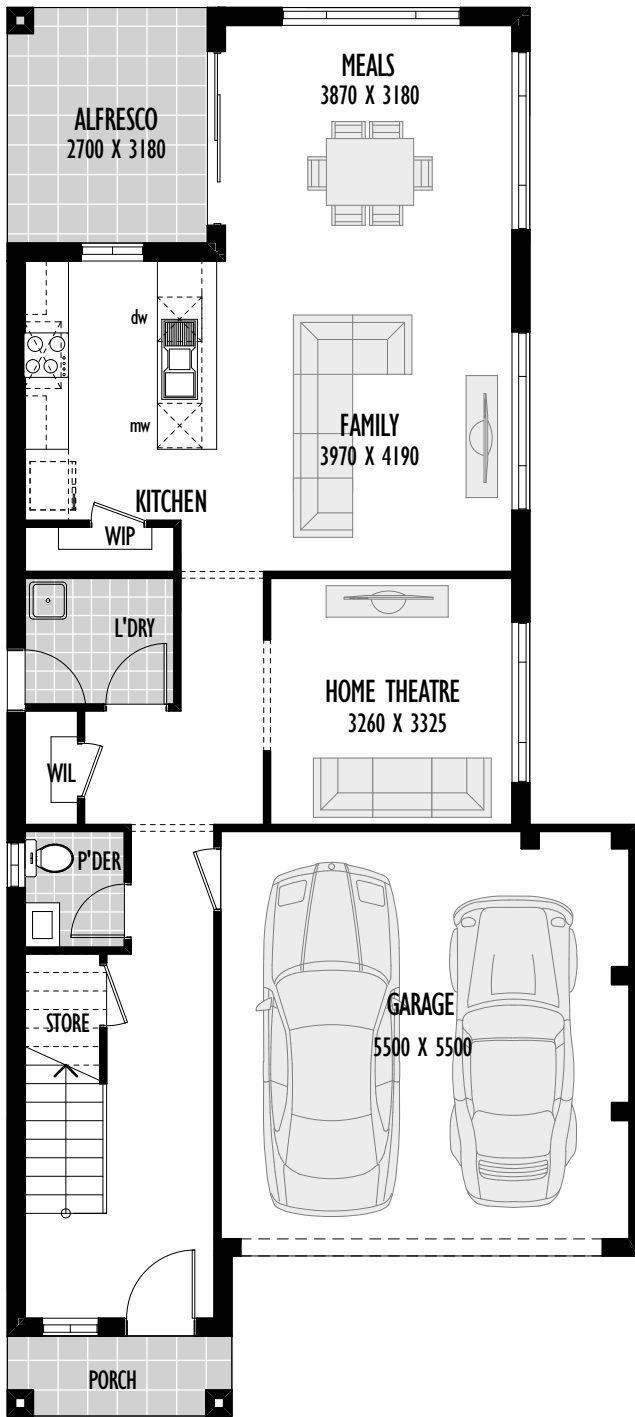
First floor



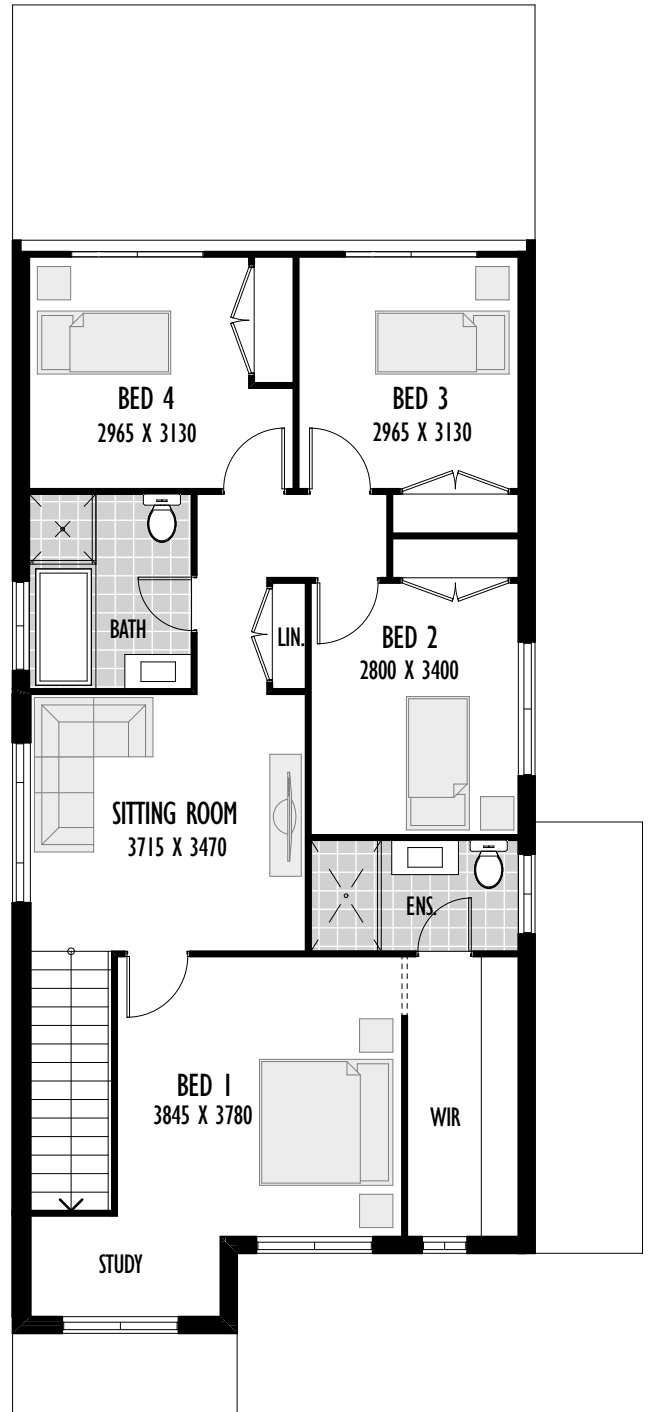
Ground Floor	74.06m <sup>2</sup>
First Floor	97.95m <sup>2</sup>
Garage	32.33m <sup>2</sup>
Porch	3.27m <sup>2</sup>

Total	207.61m <sup>2</sup> /22.34sq
Width	8.5m
Depth	15.59m
Min block width	9.5m

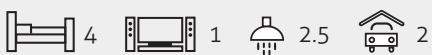
# Chevron 25



Ground floor



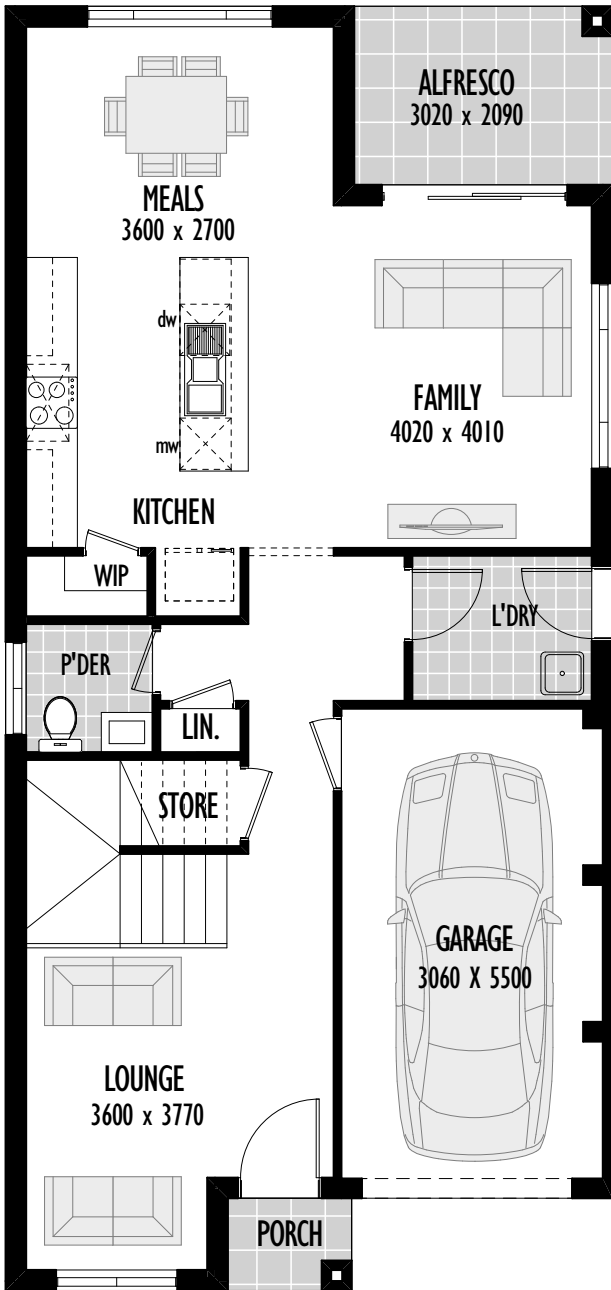
First floor



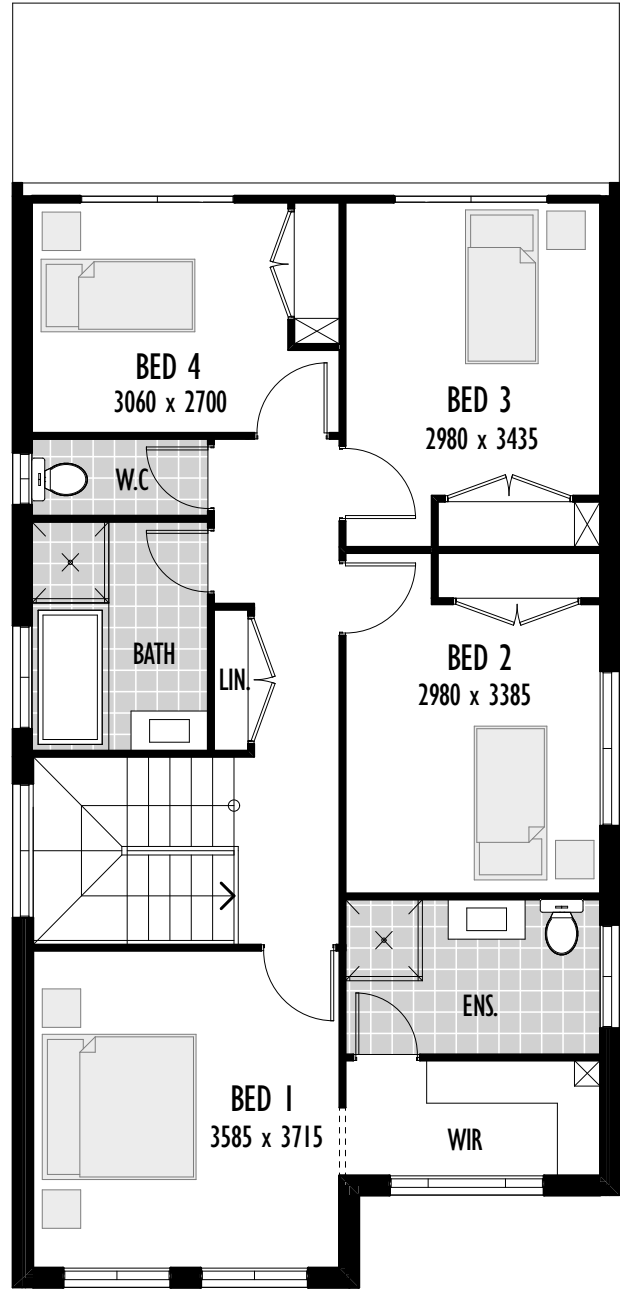
Ground Floor	87.74m <sup>2</sup>
First Floor	98.93m <sup>2</sup>
Alfresco	7.74m <sup>2</sup>
Garage	32.33m <sup>2</sup>
Porch	3.27m <sup>2</sup>

Total	230.01m <sup>2</sup> /24.75sq
Width	8.5m
Depth	19.005m
Min block width	9.5m

# Bentley 21



Ground floor



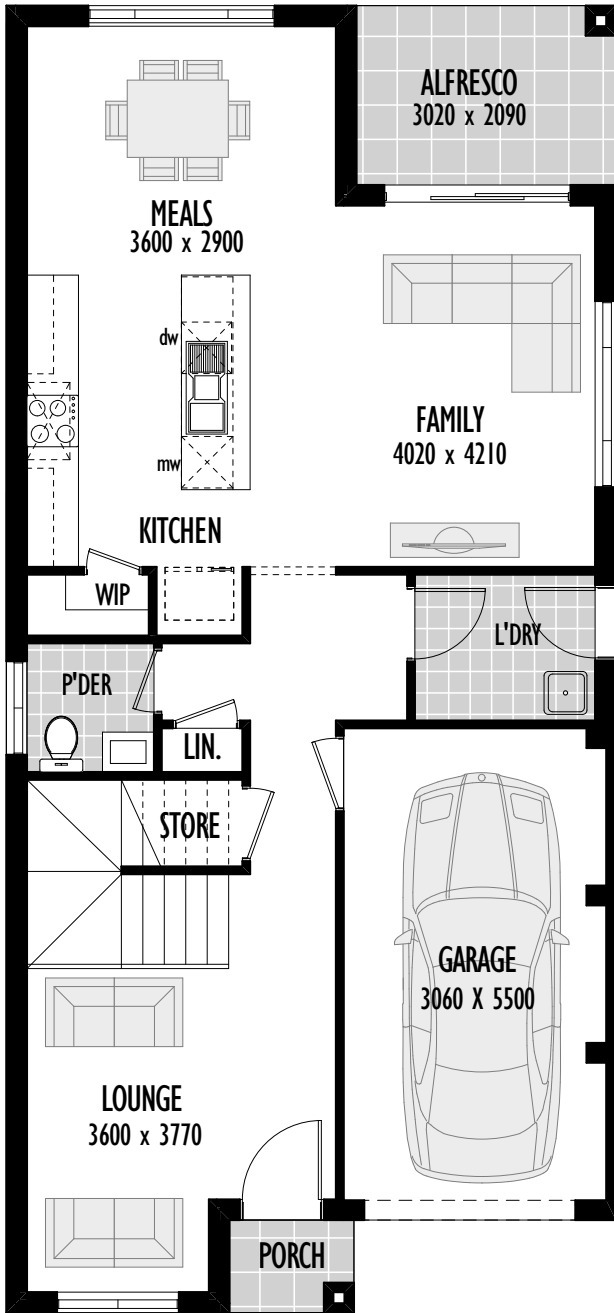
First floor



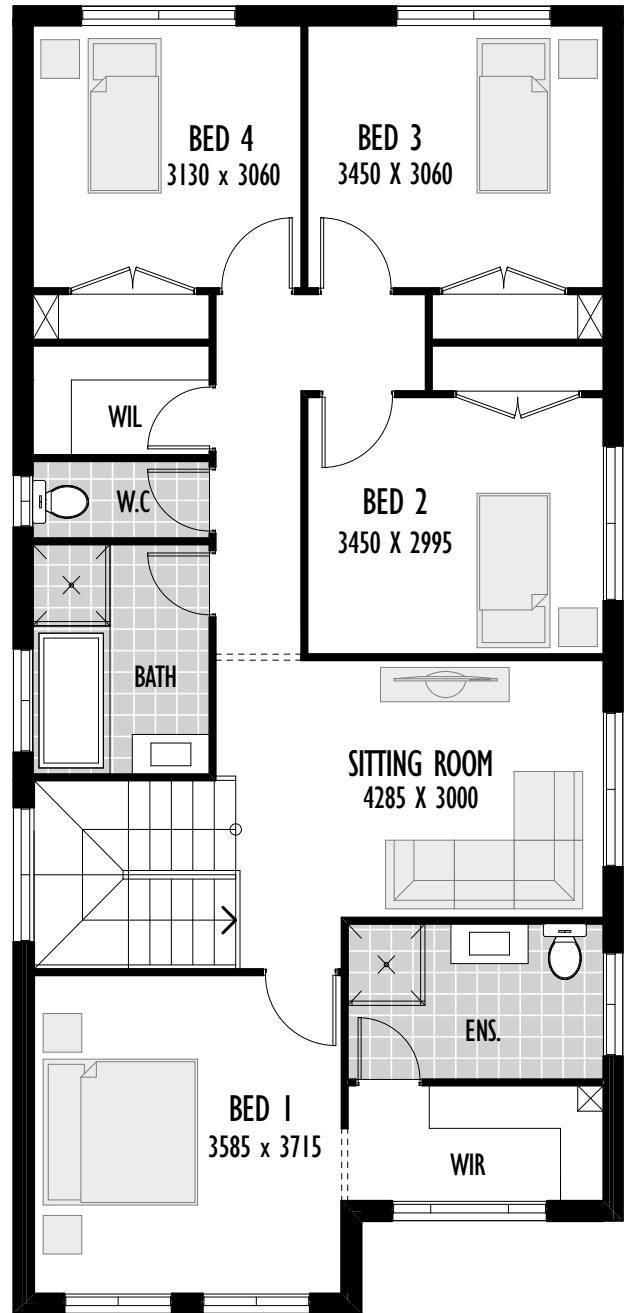
Ground Floor	77.79m <sup>2</sup>
First Floor	87.79m <sup>2</sup>
Alfresco	6.31m <sup>2</sup>
Garage	17.82m <sup>2</sup>
Porch	1.57m <sup>2</sup>

Total	191.28m <sup>2</sup> /20.58sq
Width	7.1m
Depth	15.03m
Min block width	9m

# Bentley 23



Ground floor



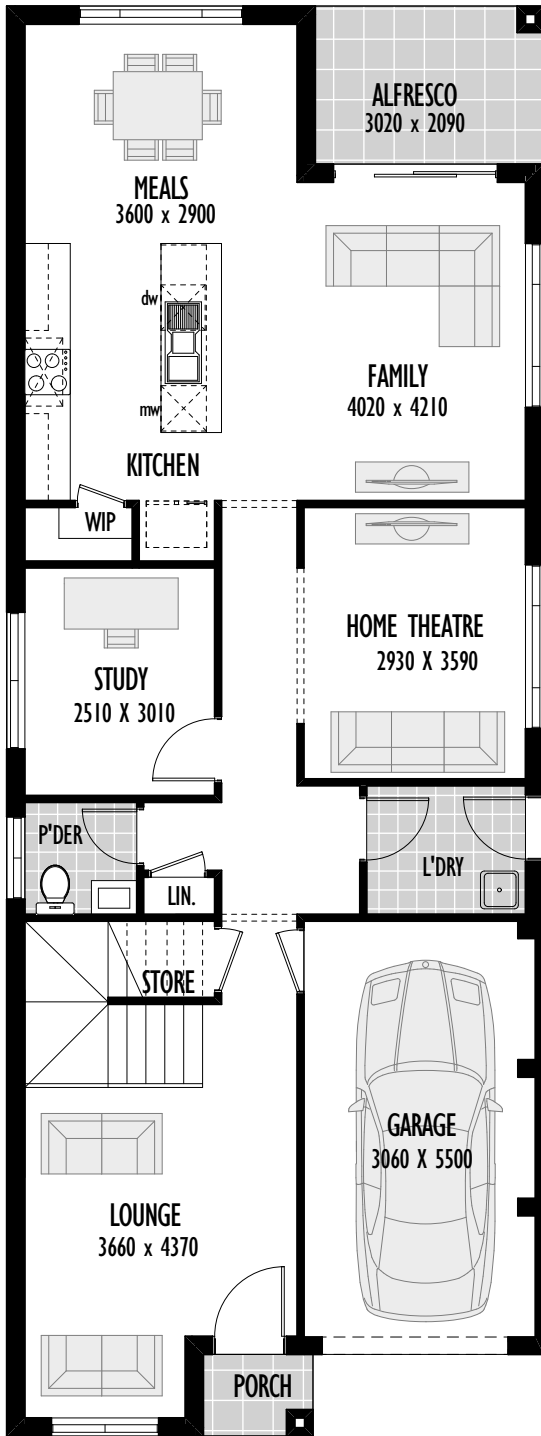
First floor



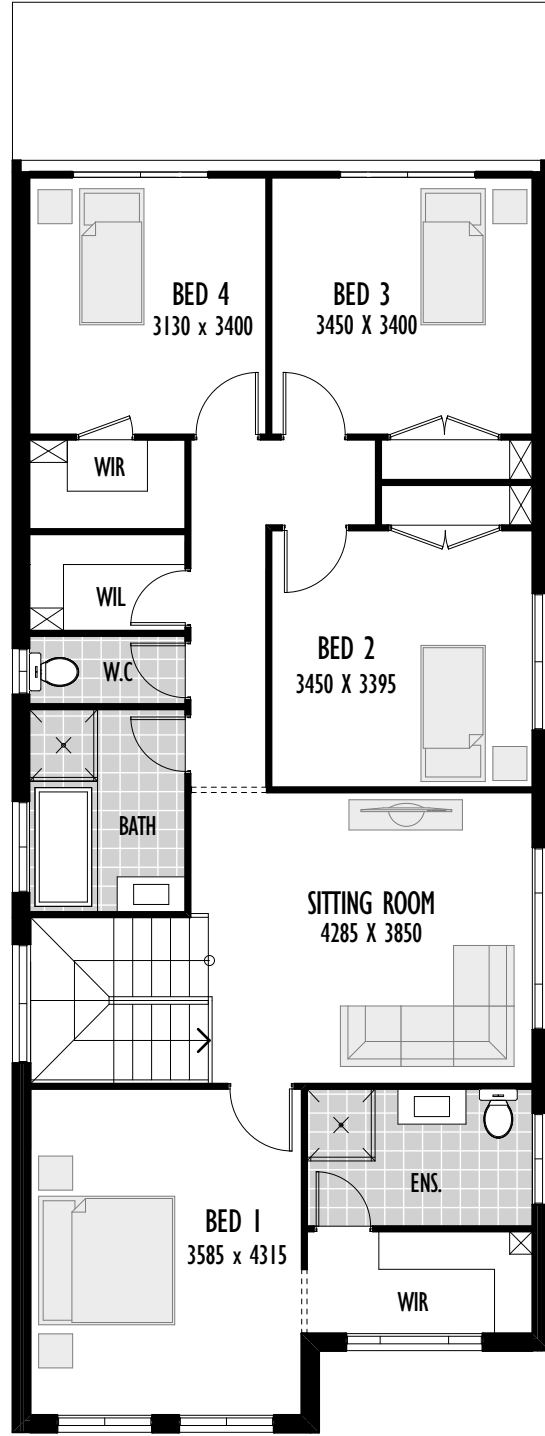
Ground Floor	79.21m <sup>2</sup>
First Floor	104.90m <sup>2</sup>
Alfresco	6.31m <sup>2</sup>
Garage	17.82m <sup>2</sup>
Porch	1.57m <sup>2</sup>

Total	209.62m <sup>2</sup> /22.56sq
Width	7.1m
Depth	15.23m
Min block width	9m

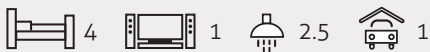
# Bentley 26



Ground floor



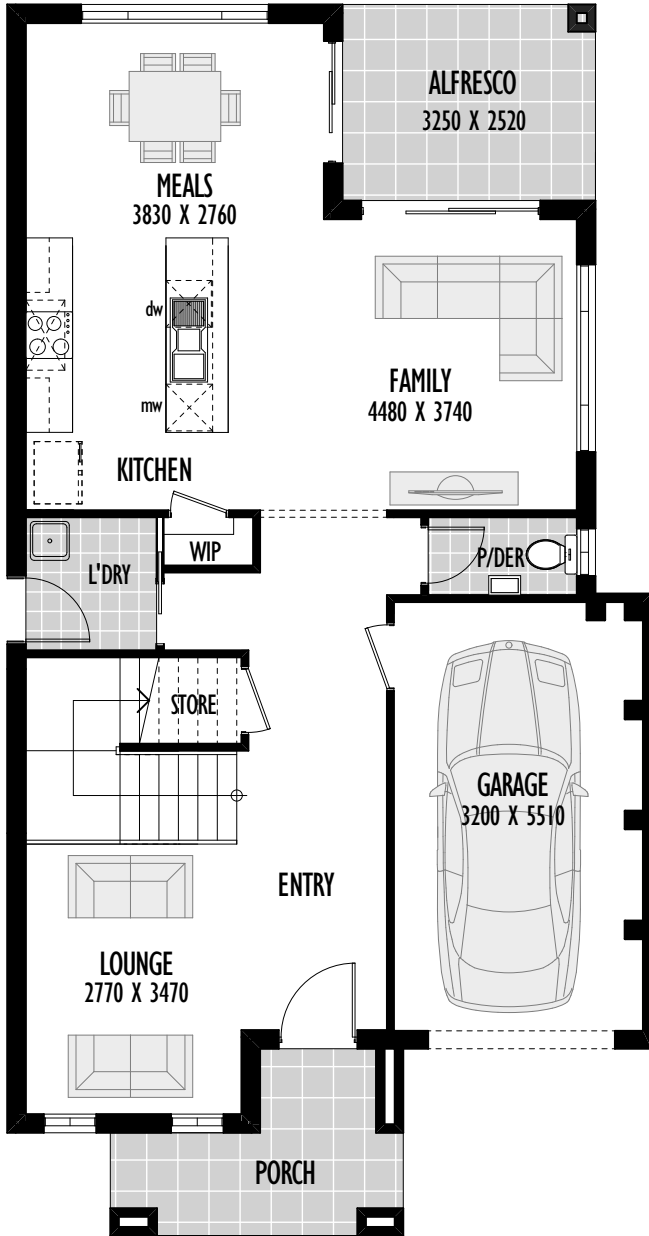
First floor



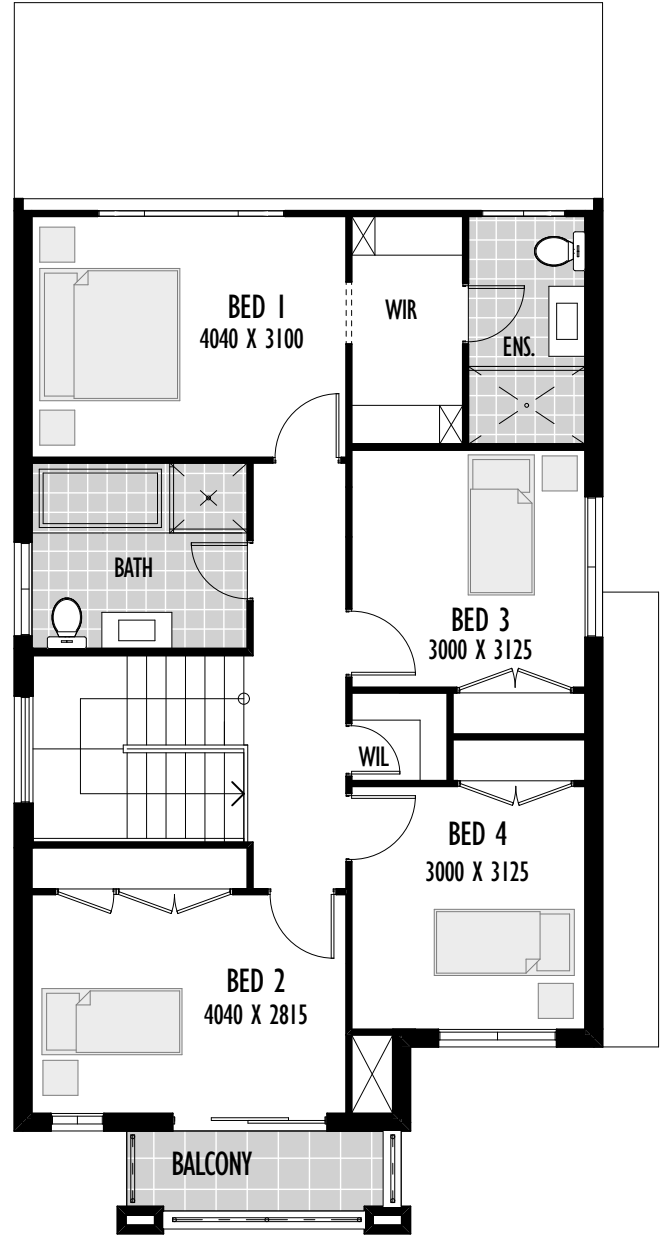
Ground Floor	104.93m <sup>2</sup>
First Floor	115.41m <sup>2</sup>
Alfresco	6.31m <sup>2</sup>
Garage	17.82m <sup>2</sup>
Porch	1.57m <sup>2</sup>

Total	246.04m <sup>2</sup> /26.48sq
Width	7.10m
Depth	18.91m
Min block width	9m

# Tuross 22



Ground floor



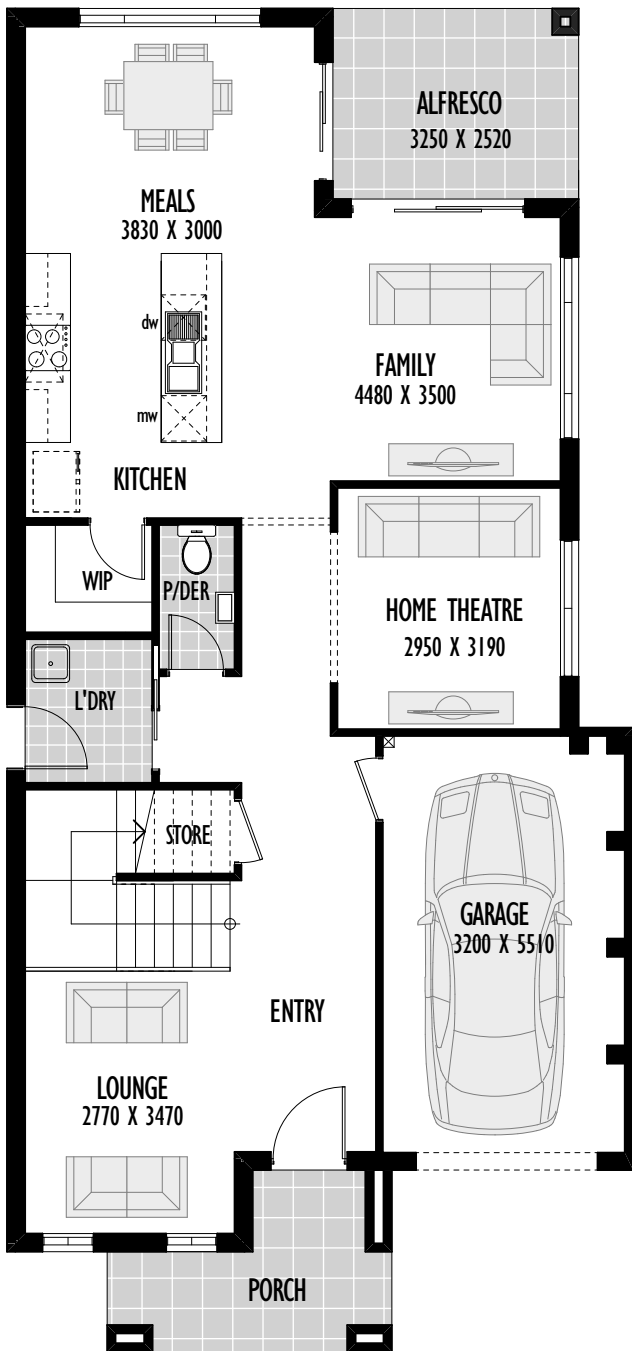
First floor



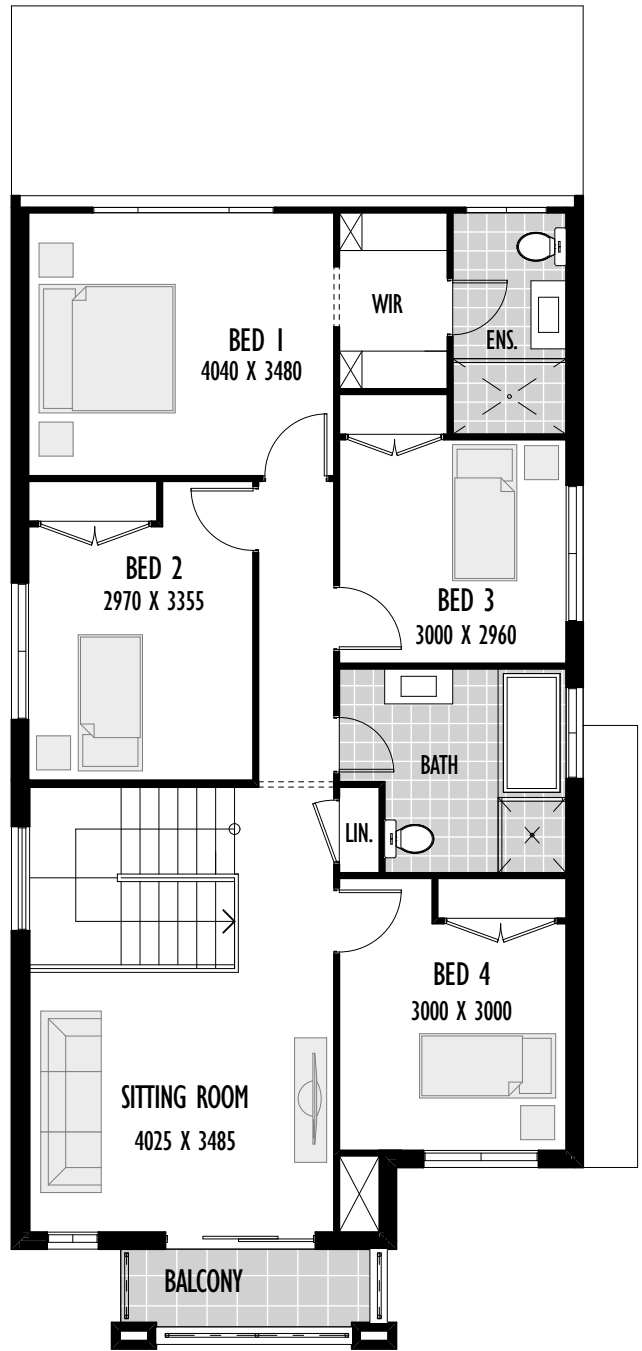
Ground Floor	81.91m <sup>2</sup>
First Floor	87.13m <sup>2</sup>
Alfresco	8.16m <sup>2</sup>
Garage	19.08m <sup>2</sup>
Porch	6.96m <sup>2</sup>

Total	207.82m <sup>2</sup> /22.37sq
Width	8.28m
Depth	15.82m
Min block width	10.3m

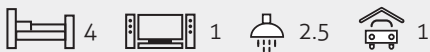
# Tuross 26



Ground floor



First floor

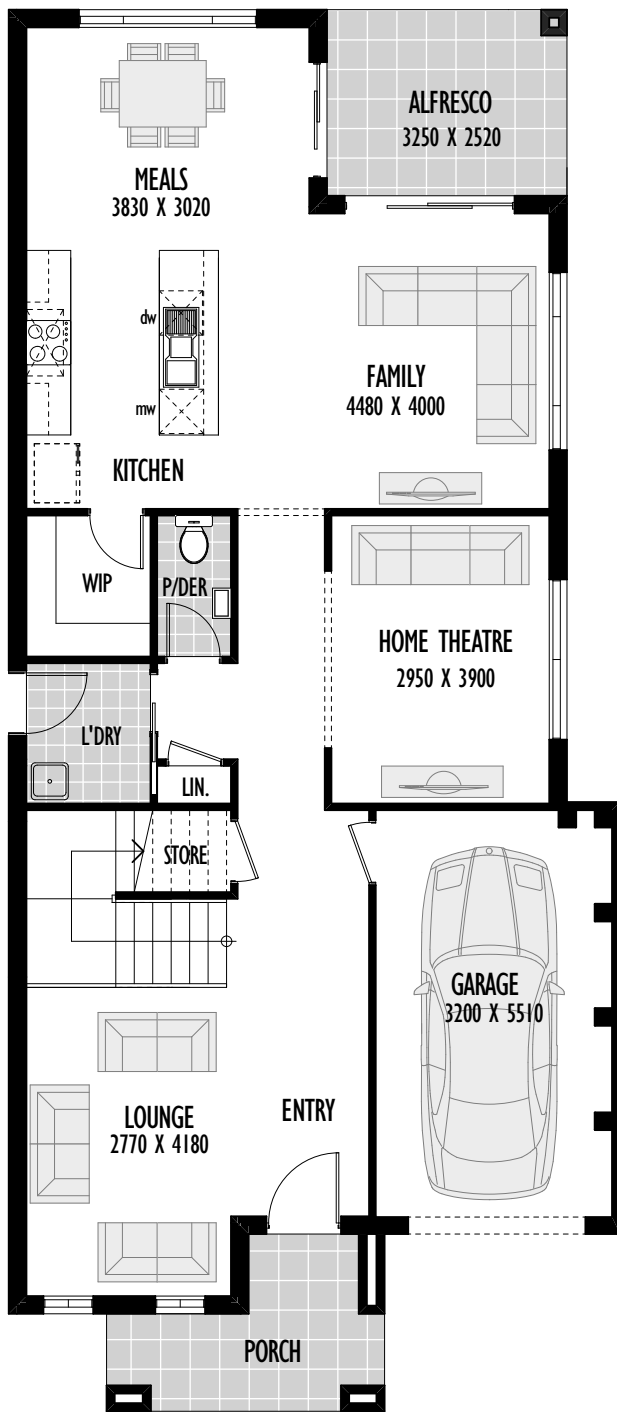


Ground Floor	96.58m <sup>2</sup>
First Floor	101.87m <sup>2</sup>
Alfresco	8.16m <sup>2</sup>
Garage	19.08m <sup>2</sup>
Porch	6.96m <sup>2</sup>

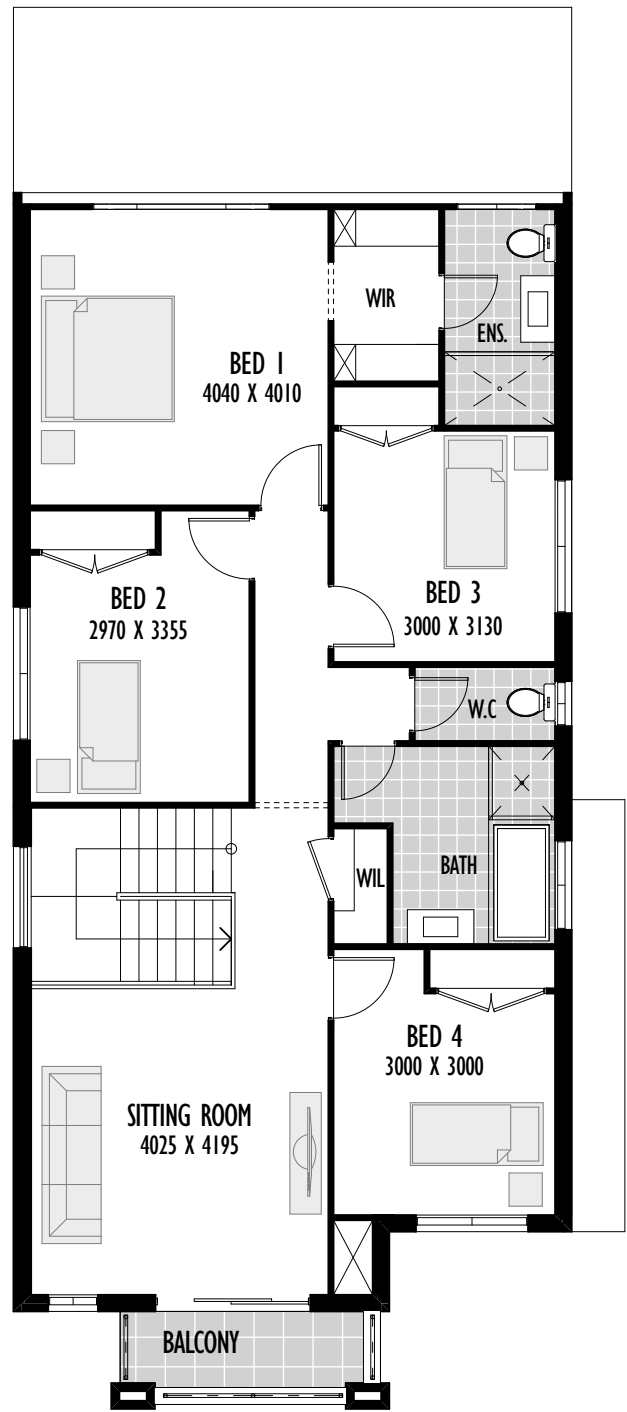
Total	237.23m <sup>2</sup> /25.53sq
Width	8.28m
Depth	17.76m
Min block width	10.3m



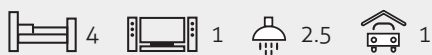
# Tuross 28



Ground floor



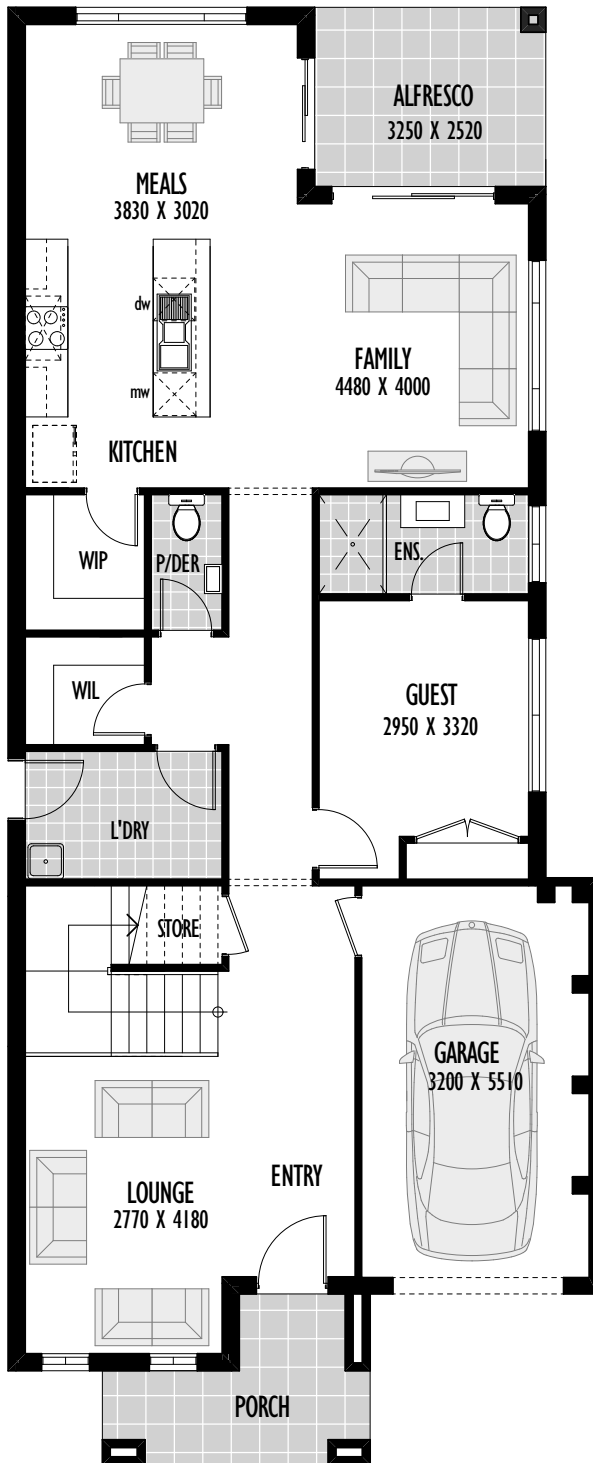
First floor



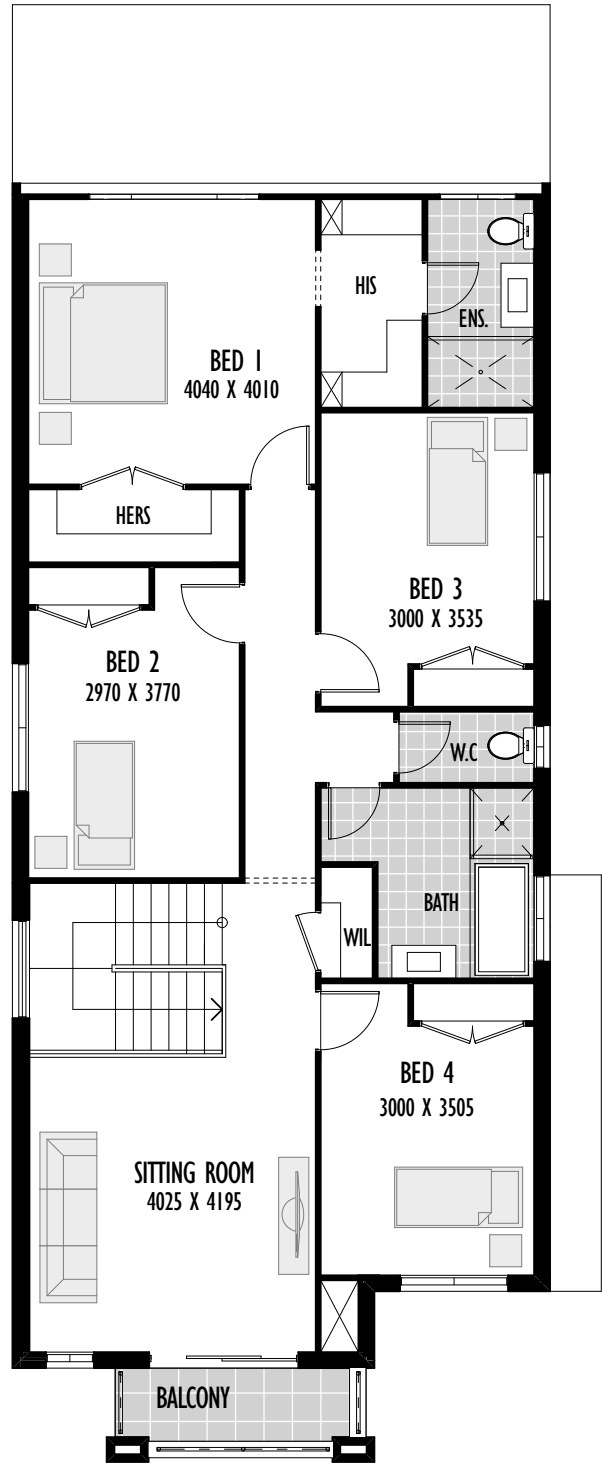
Ground Floor	105.80m <sup>2</sup>
First Floor	111.10m <sup>2</sup>
Alfresco	8.16m <sup>2</sup>
Garage	19.08m <sup>2</sup>
Porch	6.96m <sup>2</sup>

Total	255.68m <sup>2</sup> /27.52sq
Width	8.28m
Depth	18.98m
Min block width	10.3m

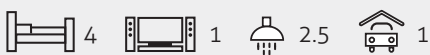
# Tuross 30



Ground floor

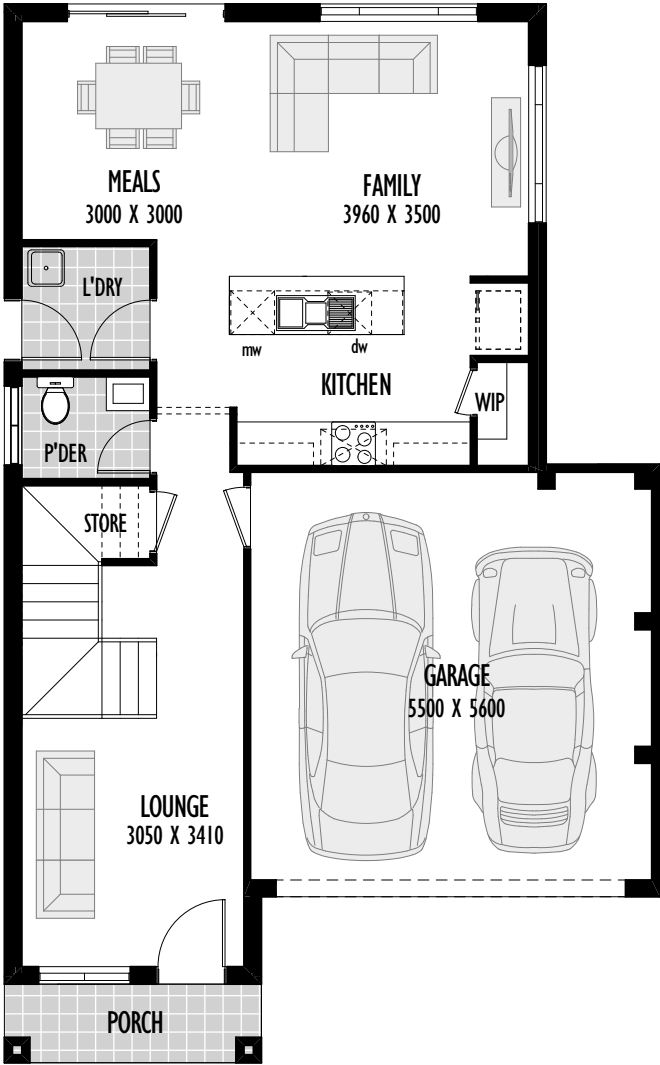


First floor

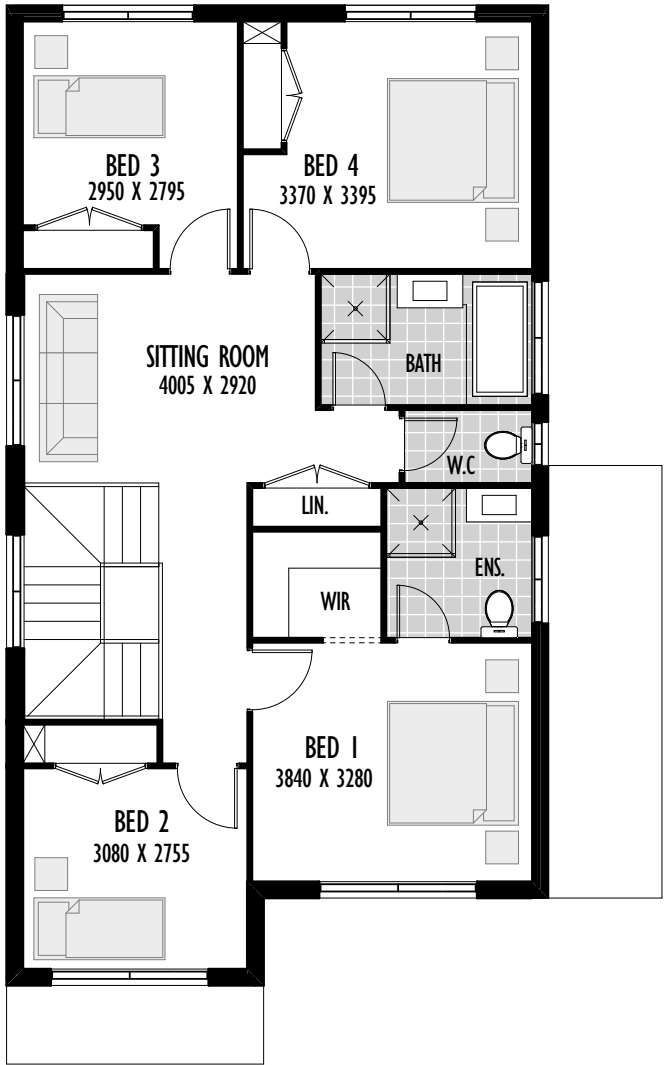


Ground Floor	117.21m <sup>2</sup>	Total	278.50m <sup>2</sup> /29.97sq
First Floor	122.51m <sup>2</sup>	Width	8.28m
Alfresco	8.16m <sup>2</sup>	Depth	20.49m
Garage	19.08m <sup>2</sup>	Min block width	10.3m
Porch	6.96m <sup>2</sup>		

# Cheville 22



Ground floor



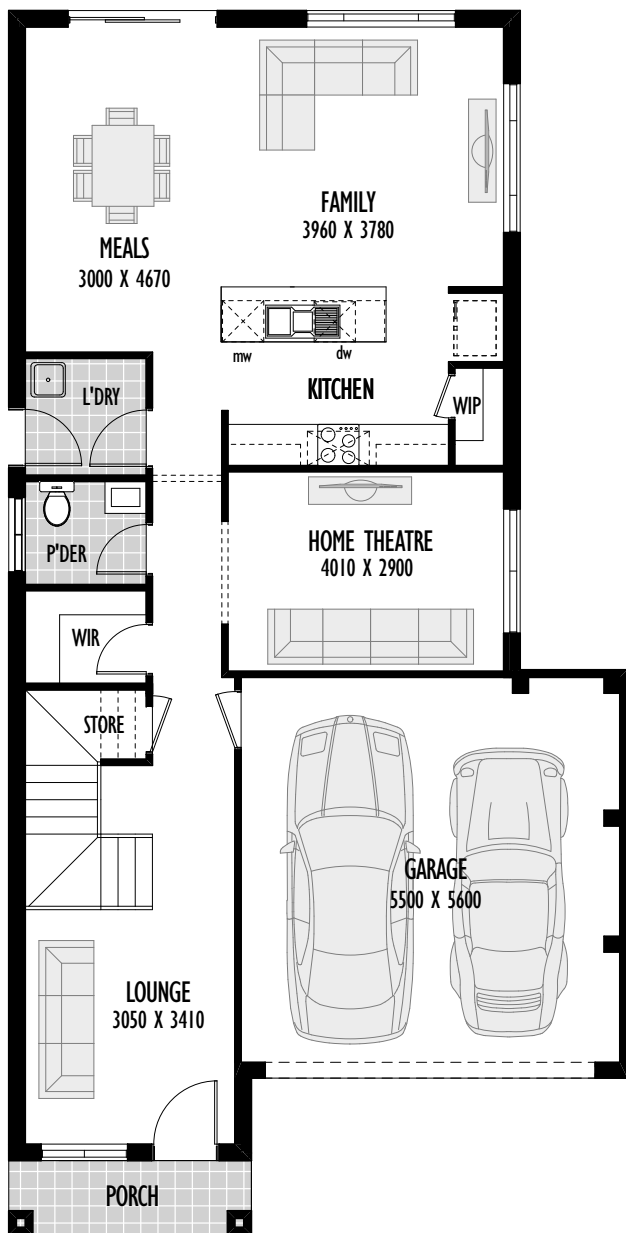
First floor



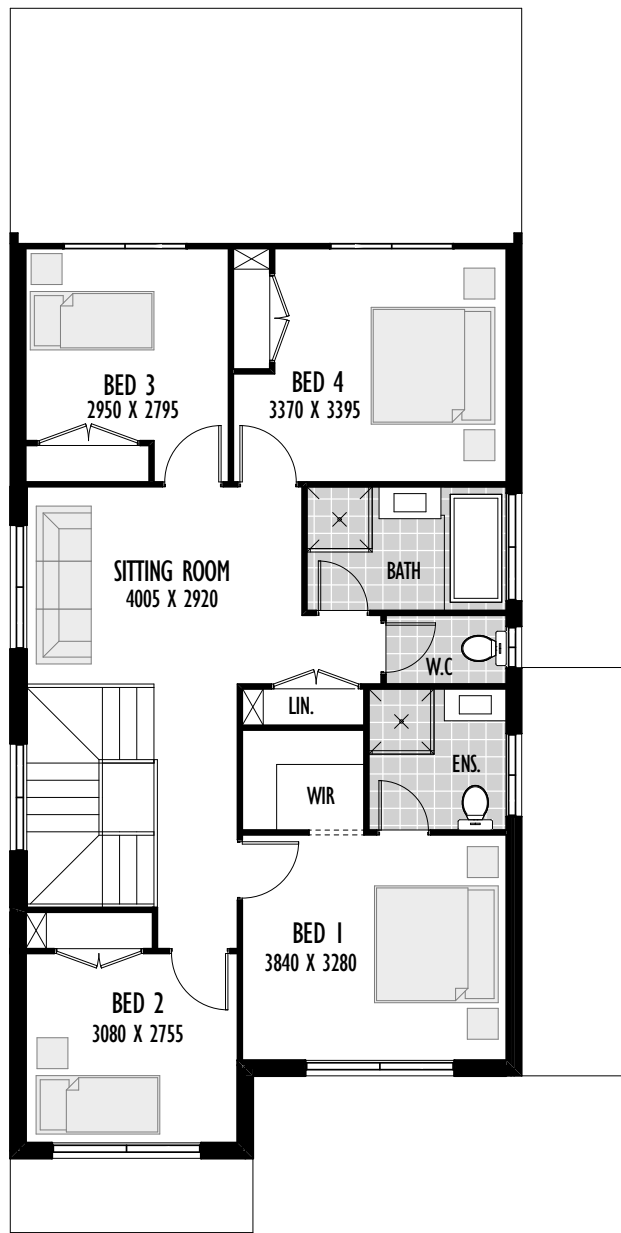
Ground Floor	71.78m <sup>2</sup>
First Floor	95.45m <sup>2</sup>
Garage	32.94m <sup>2</sup>
Porch	3.81m <sup>2</sup>

Total	203.98m <sup>2</sup> /21.95sq
Width	9.0m
Depth	14.54m
Min block width	10m

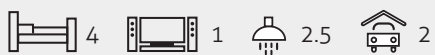
# Cheville 24



Ground floor



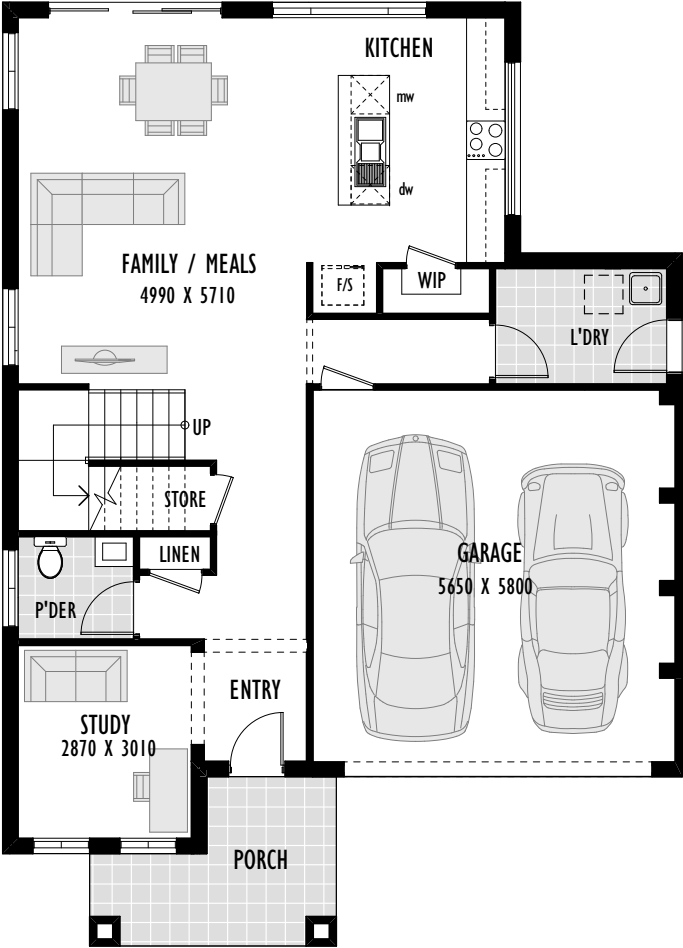
First floor



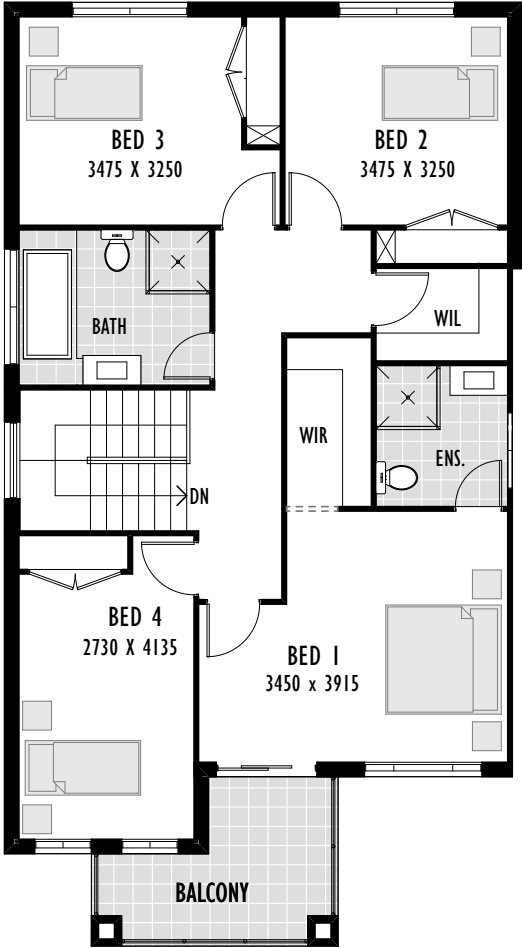
Ground Floor	96.11m <sup>2</sup>
First Floor	94.69m <sup>2</sup>
Garage	32.94m <sup>2</sup>
Porch	3.81m <sup>2</sup>

Total	227.55m <sup>2</sup> /24.49sq
Width	9.0m
Depth	17.81m
Min block width	10m

# Bedford 26



Ground floor



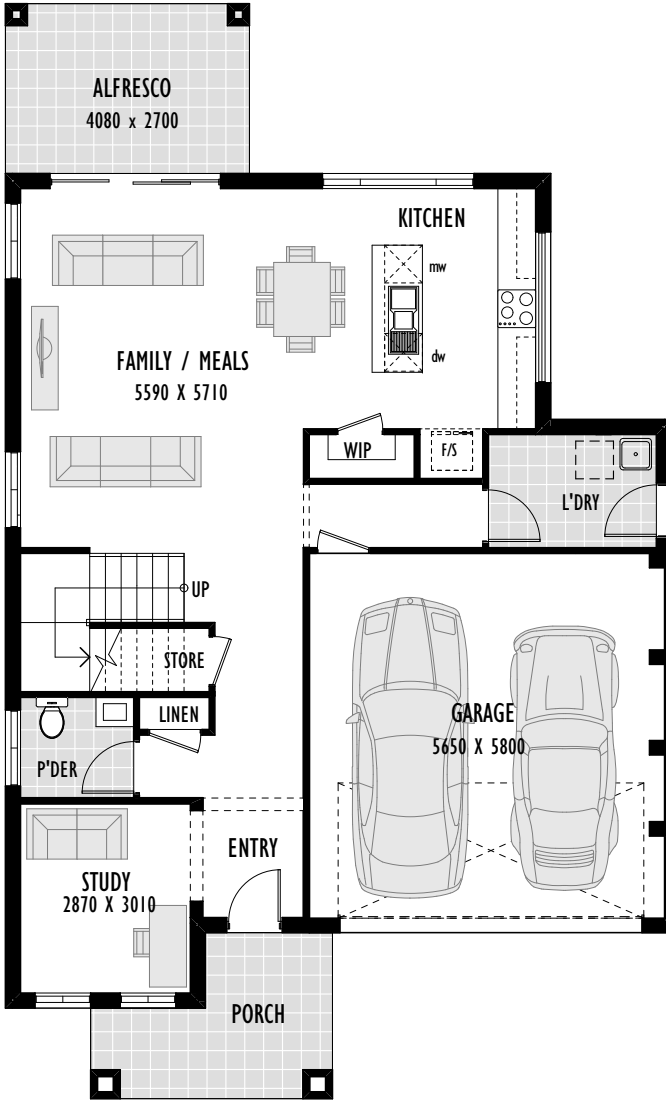
First floor



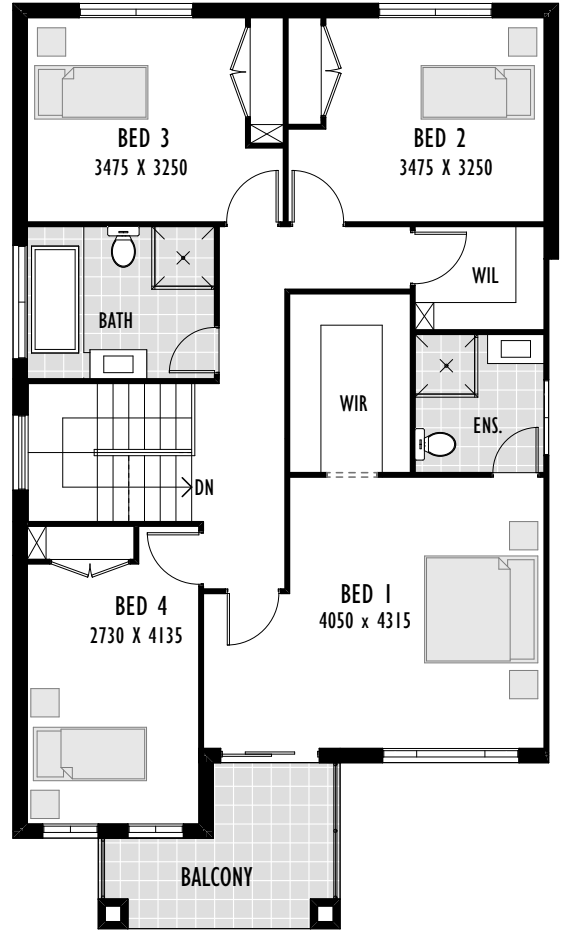
Ground Floor	87.05m <sup>2</sup>
First Floor	99.99m <sup>2</sup>
Garage	34.73m <sup>2</sup>
Porch	7.96m <sup>2</sup>

Total	237.69m <sup>2</sup> /25.58sq
Width	10.59m
Depth	14.71m
Min block width	12.5m

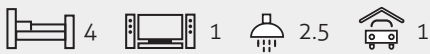
# Bedford 28



Ground floor



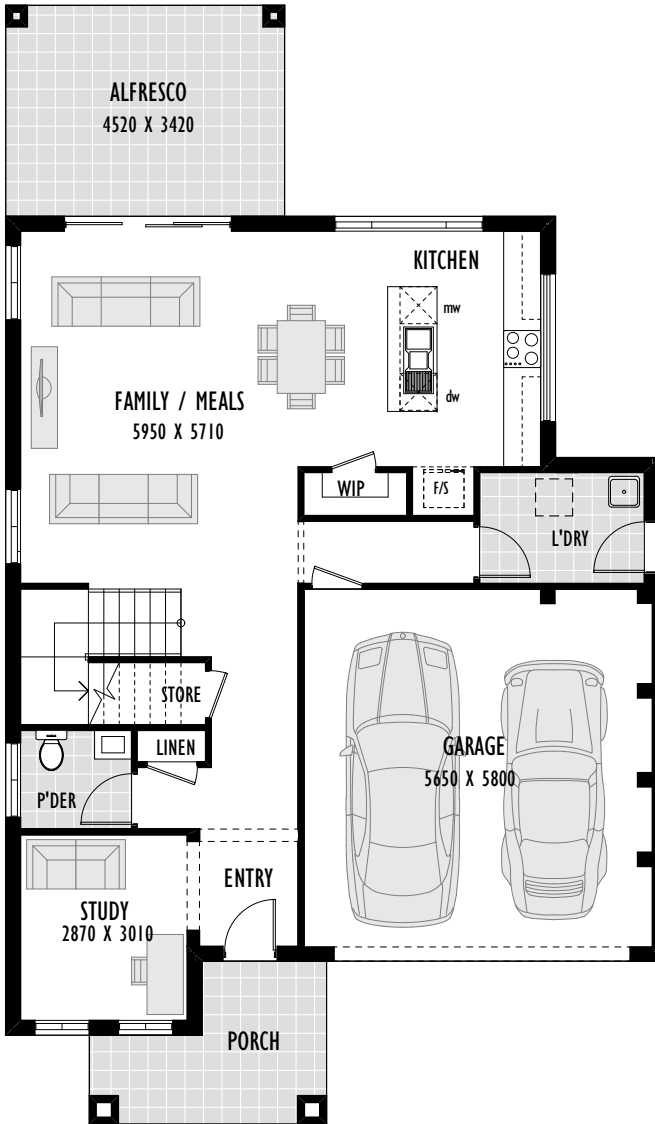
First floor



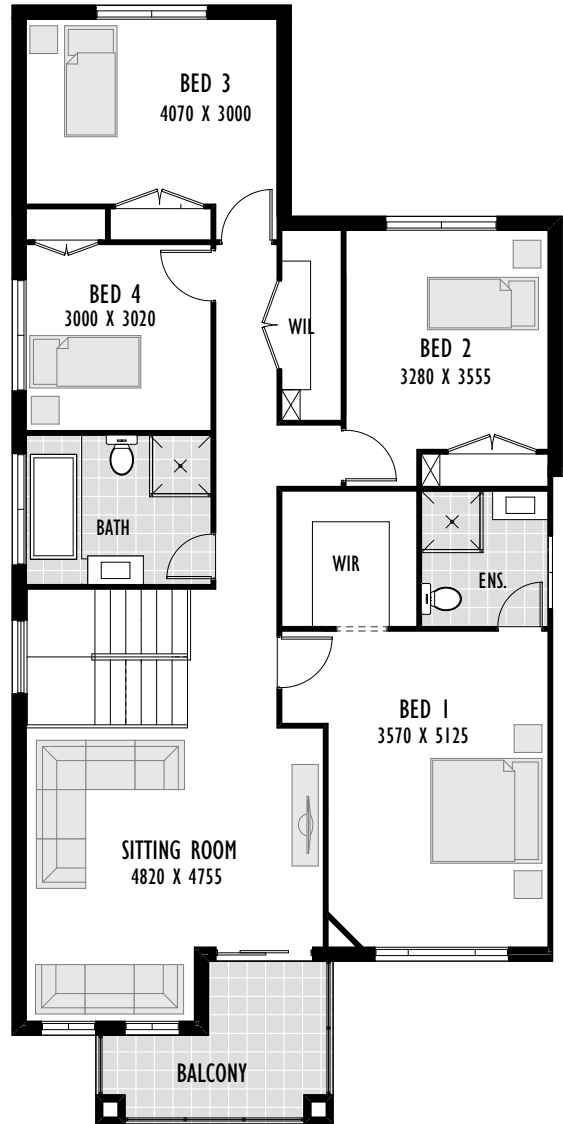
Ground Floor	89.39m <sup>2</sup>
First Floor	107.22m <sup>2</sup>
Alfresco	10.98m <sup>2</sup>
Garage	34.73m <sup>2</sup>
Porch	7.96m <sup>2</sup>

Total	258.24m <sup>2</sup> /27.79sq
Width	10.59m
Depth	17.41m
Min block width	12.5m

# Bedford 30



Ground floor



First floor



Ground Floor	90.33m <sup>2</sup>
First Floor	125.60m <sup>2</sup>
Alfresco	15.46m <sup>2</sup>
Garage	34.73m <sup>2</sup>
Porch	8.05m <sup>2</sup>

Total	228.22m <sup>2</sup> /30.37sq
Width	10.59m
Depth	18.13m
Min block width	12.5m

# Double Storey Facades



Sonata Facade



Tempo Facade



Altona Facade





**Bedford Facade**



**Granvia Facade**



**Novo Facade**



**Marlow Facade**



**Astra Facade**



**Navarra Facade**



Neo Facade



**GREAT SERVICE**



**FAST APPROVAL TIME**



**DESIGN FLEXIBILITY**



**VALUE FOR MONEY**



**HIGH QUALITY STANDARD**



**EXPERIENCE**

[provincialhomes.com.au](http://provincialhomes.com.au)



**Proven Professional Provincial Homes**

