

# Sienna

SERIES



Sienna Facade

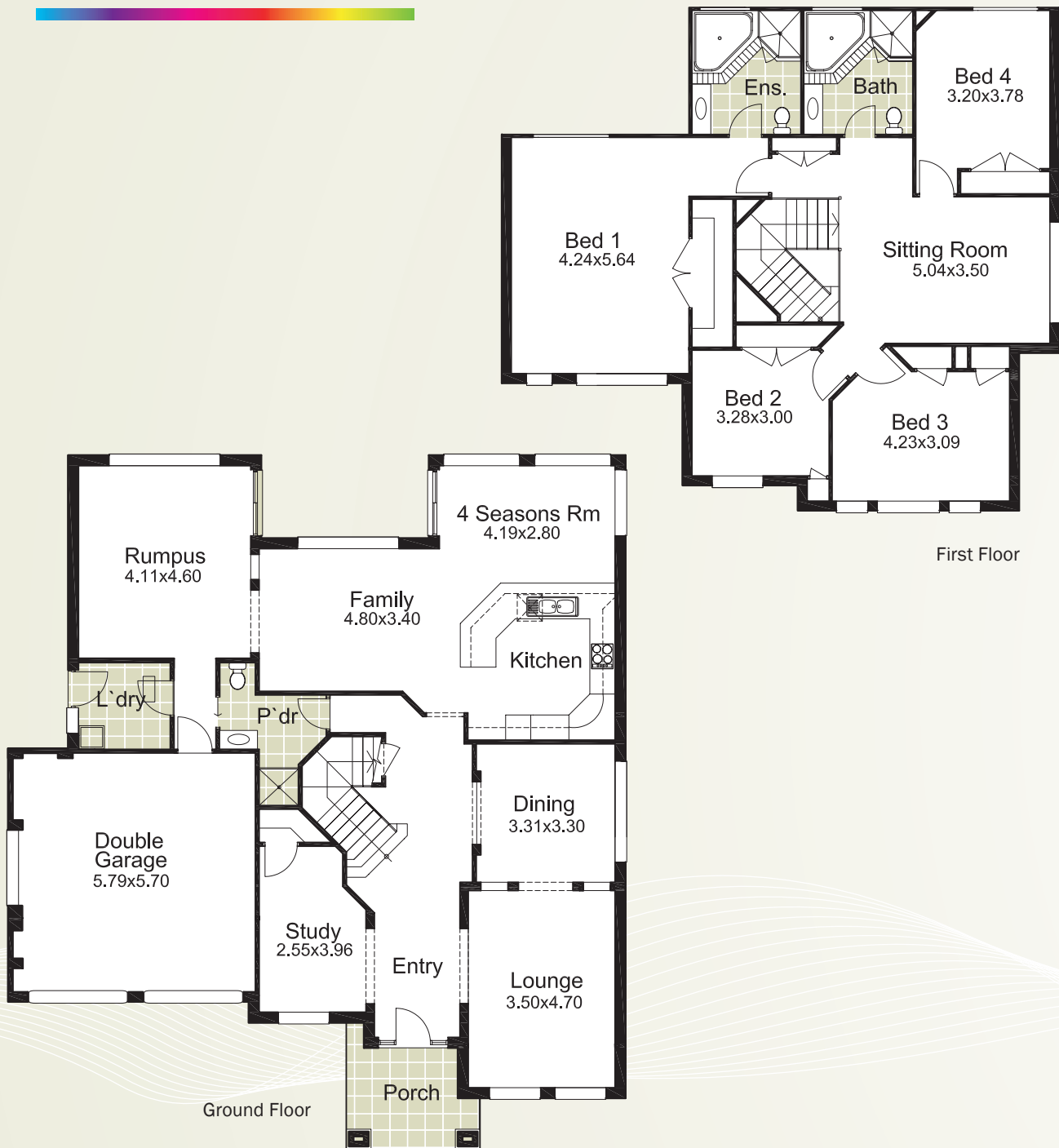


[provincialhomes.com.au](http://provincialhomes.com.au)

Proven  
Professional  
Provincial Homes



# Sienna 35

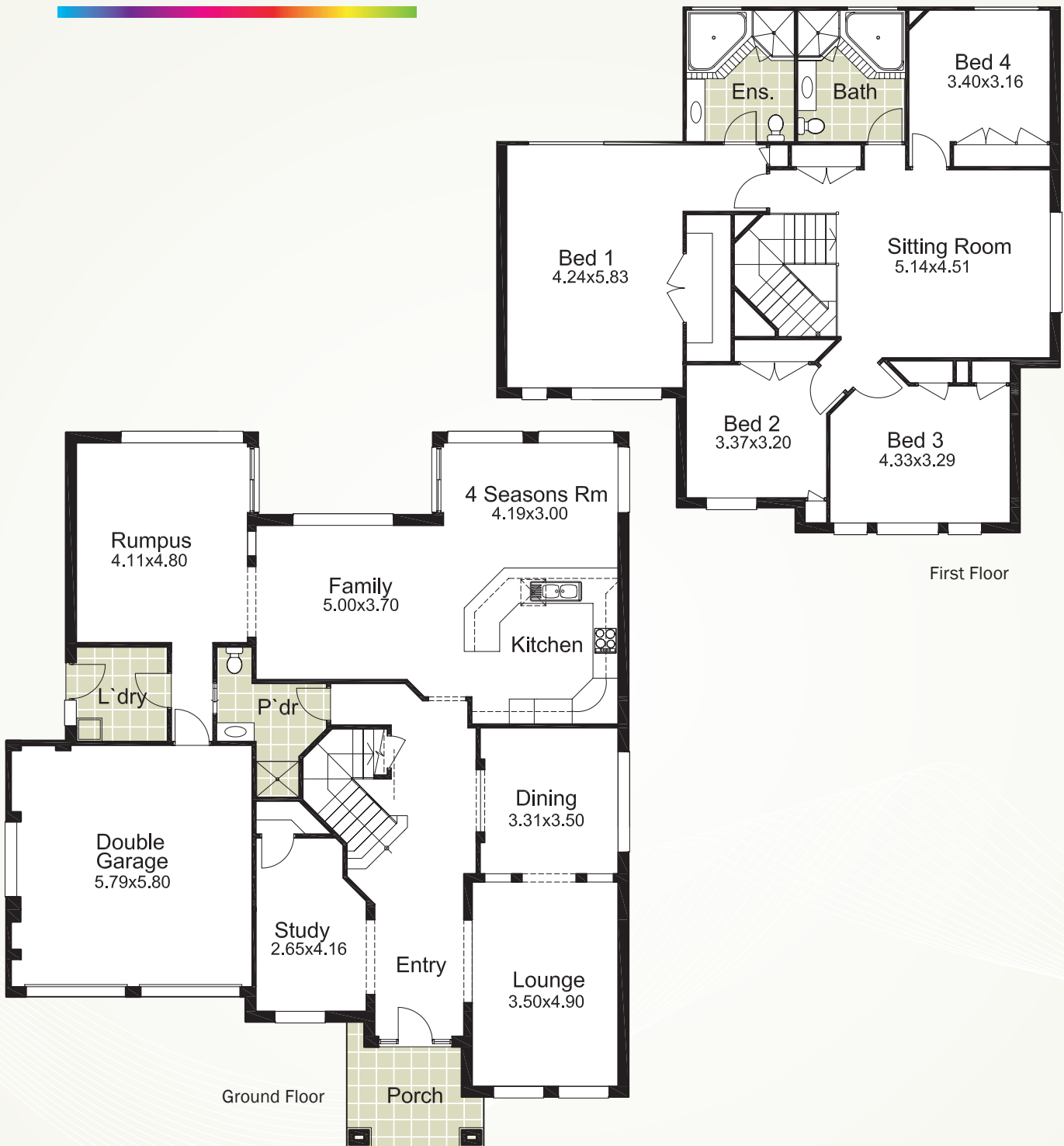


|                     |                      |
|---------------------|----------------------|
| <b>Ground Floor</b> | 153.10m <sup>2</sup> |
| <b>First Floor</b>  | 127.70m <sup>2</sup> |
| <b>Garage</b>       | 34.15m <sup>2</sup>  |
| <b>Porch</b>        | 7.30m <sup>2</sup>   |

|              |                               |
|--------------|-------------------------------|
| <b>Total</b> | 322.25m <sup>2</sup> /34.68sq |
| <b>Width</b> | 14.73m                        |
| <b>Depth</b> | 16.66m                        |

- 4 Bed**
- 3 Bath**
- 2 Car**

# Sienna 37



|                     |                      |
|---------------------|----------------------|
| <b>Ground Floor</b> | 161.57m <sup>2</sup> |
| <b>First Floor</b>  | 136.20m <sup>2</sup> |
| <b>Garage</b>       | 35.74m <sup>2</sup>  |
| <b>Porch</b>        | 7.54m <sup>2</sup>   |

|              |                               |
|--------------|-------------------------------|
| <b>Total</b> | 341.05m <sup>2</sup> /36.71sq |
| <b>Width</b> | 14.93m                        |
| <b>Depth</b> | 17.14m                        |

- 4 Bed**
- 3 Bath**
- 2 Car**

# Sienna 40



|              |                      |
|--------------|----------------------|
| Ground Floor | 180.99m <sup>2</sup> |
| First Floor  | 148.52m <sup>2</sup> |
| Garage       | 34.73m <sup>2</sup>  |
| Porch        | 7.54m <sup>2</sup>   |

|       |                            |
|-------|----------------------------|
| Total | 371.78m <sup>2</sup> /40sq |
| Width | 15.45m                     |
| Depth | 17.74m                     |

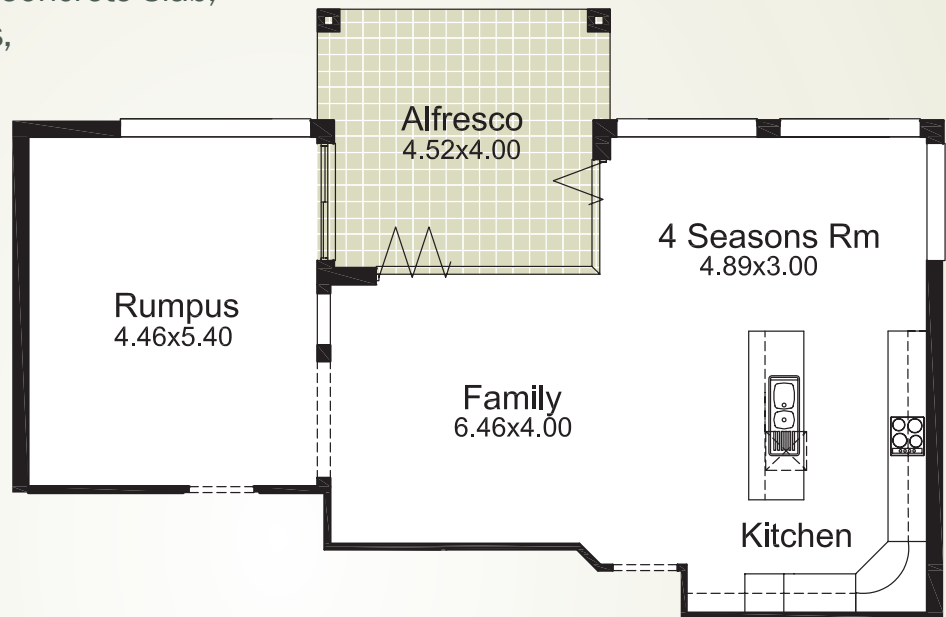
- 4** Bed
- 3** Bath
- 2** Car

# Sienna

ALFRESCO OPTIONS

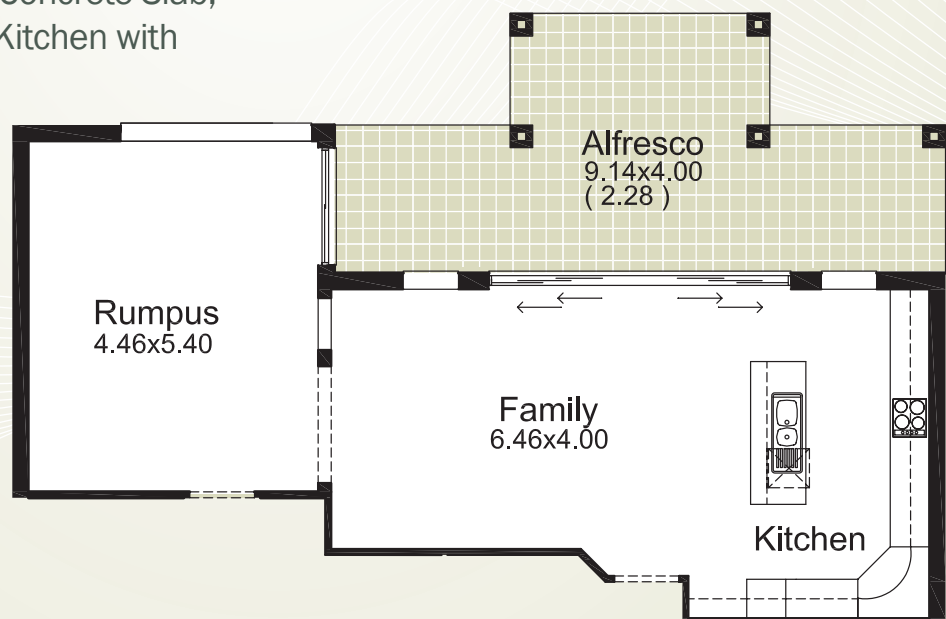
## Option 1

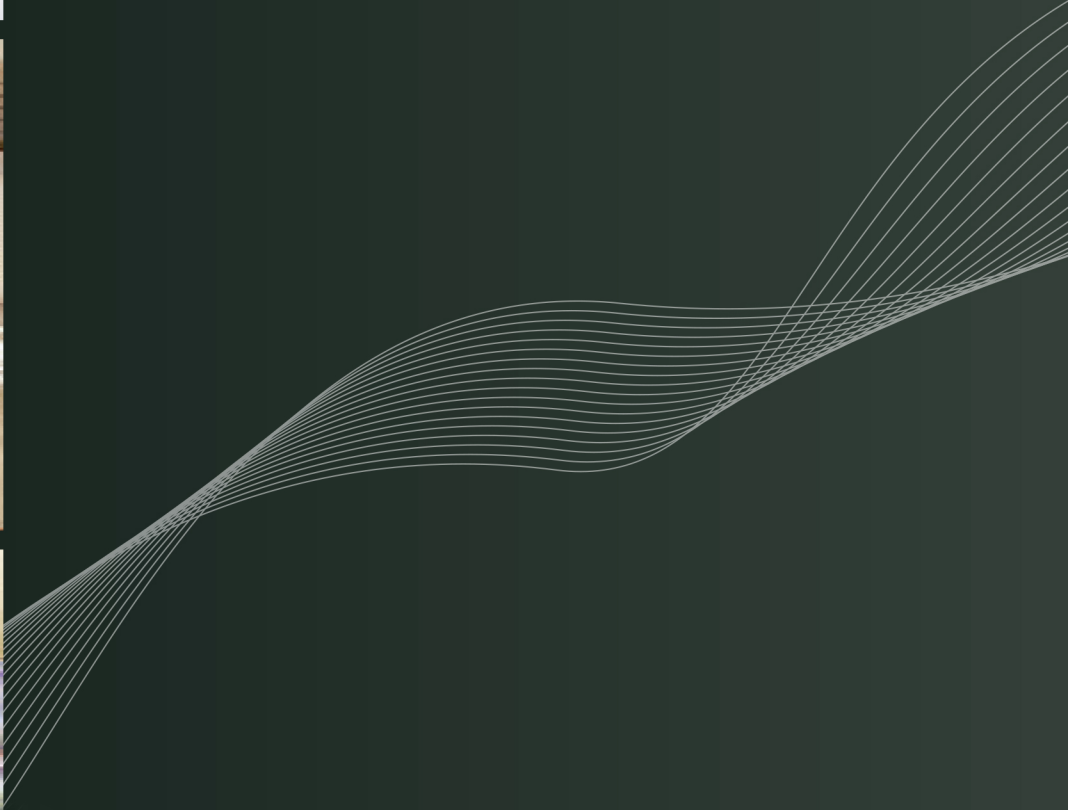
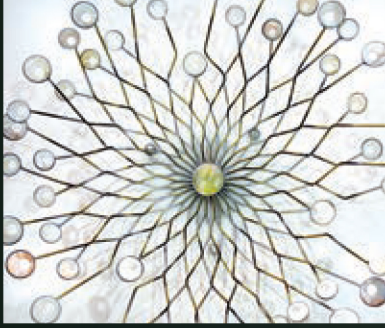
Covered Alfresco, Tiled Concrete Slab,  
Bi-fold or Stacker Doors,  
Gallery Kitchen with  
Island Benchtop.



## Option 2

Covered Alfresco, Tiled Concrete Slab,  
Stacker Doors, Gallery Kitchen with  
Island Benchtop.





# Proven Professional Provincial Homes

[provincialhomes.com.au](http://provincialhomes.com.au)

The details in the brochure and any associated marketing material are subject to change without prior notice and are for information purposes only. All illustrations and plans are indicative artists impressions only and are not necessarily to scale or to absolute likeness. Provincial Homes reserves the right to change plans, specification and prices without notice. Each home design and construction is copyright by Provincial Homes Pty Ltd.  
Builders Lic No. 5685C ABN 31 003 934 058.