

# House & Land PACKAGE

Arive Series



 3  2.5  2

**ASHTON 19**

> LEXTON

**LOT 5322**

**SADDLEBRED WAY, BOX HILL  
(THE HILLS OF CARMEL)**

**\$790,100 (PACKAGE PRICE)**

**HOUSE PRICE : \$310,100**

**LAND PRICE : \$480,000**

## Inclusions

- ▶ Fixed Site Costs include Piering and Connections
- ▶ Solid concrete raft slab
- ▶ Floor tiles to Living Areas
- ▶ Carpet to bedrooms
- ▶ 2.6m ceiling height
- ▶ Reverse Cycle Air Conditioner
- ▶ Tiled concrete Porch
- ▶ Fly-screens to opening windows
- ▶ Semi-frameless shower screens
- ▶ Colorbond garage door with remote control
- ▶ Security System
- ▶ 20mm Caesarstone to kitchen benchtop
- ▶ BASIX requirements
- ▶ Roof sarking
- ▶ Instantaneous gas hot water system
- ▶ Downlight Package
- ▶ Stainless steel appliances
- ▶ Turf to front & rear yards
- ▶ Letterbox & clothesline
- ▶ Coloured concrete driveway and path to entry
- ▶ 6 months maintenance
- ▶ Blinds to windows
- ▶ H2 treated frames and trusses
- ▶ Split Contract

VALID to DECEMBER 2020

For further information contact  
George Posa 0418 967 102  
[provincialhomes.com.au](http://provincialhomes.com.au)

EVERYONE  
NEEDS  
A LITTLE  
LUXURY

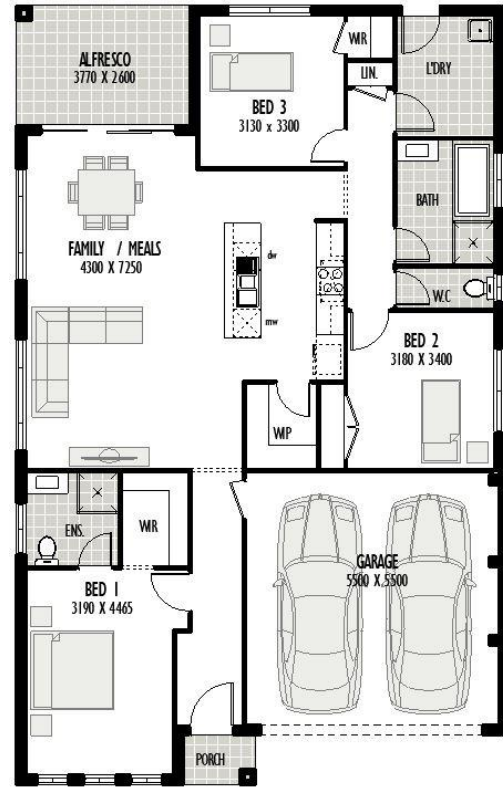
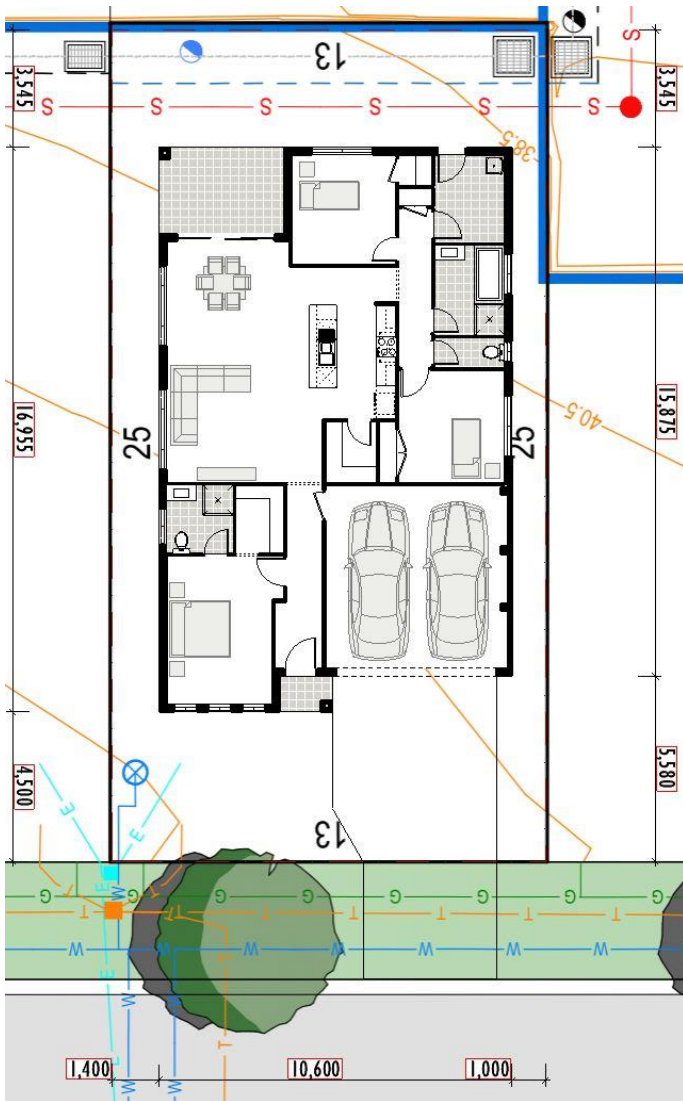
ALL  
AT NO  
EXTRA  
COST

**Arive series**  
*You're here*

**Proven  
Professional  
Provincial Homes**



# House & Land



HOUSE	
Ground Floor	130.26m <sup>2</sup>
Garage	32.15m <sup>2</sup>
Porch	1.70m <sup>2</sup>
Alfresco	9.80m <sup>2</sup>
<b>Total</b>	<b>173.91m<sup>2</sup>/18.72sqs</b>
LAND	
Area	325m <sup>2</sup>

**For Further Information** **0418 967 102**  
**Contact George Posa**

[gmposa@provincialhomes.com.au](mailto:gmposa@provincialhomes.com.au)  
[provincialhomes.com.au](http://provincialhomes.com.au)

Disclaimer: The information contained herein is subject to Council Approval. The details in the brochure and any associated marketing material are subject to change without prior notice and are for information purposes only. All illustrations and plans are indicative. Provincial Homes reserves the right to change plans, specification and prices without notice. Each home design and construction is copyright by Provincial Homes Pty Ltd.