

# House & Land PACKAGE

Arive Series



DISCLAIMER: FACADE ILLUSTRATION IS INDICATIVE ONLY



**VOLANTE 15 - SPECIAL**

> LOTUS

**LOT 343  
MAJOR TOMKINS PDE  
WERRINGTON**

**\$645,650.00 (PACKAGE PRICE)**

**HOUSE PRICE : \$295,700.00**

**LAND PRICE : \$349,950.00**

VALID to DECEMBER 2020  
For further information contact  
Pilar Riveros 0404 003 246  
[provincialhomes.com.au](http://provincialhomes.com.au)

EVERYONE  
NEEDS  
A LITTLE  
LUXURY

ALL  
AT NO  
EXTRA  
COST

## Inclusions

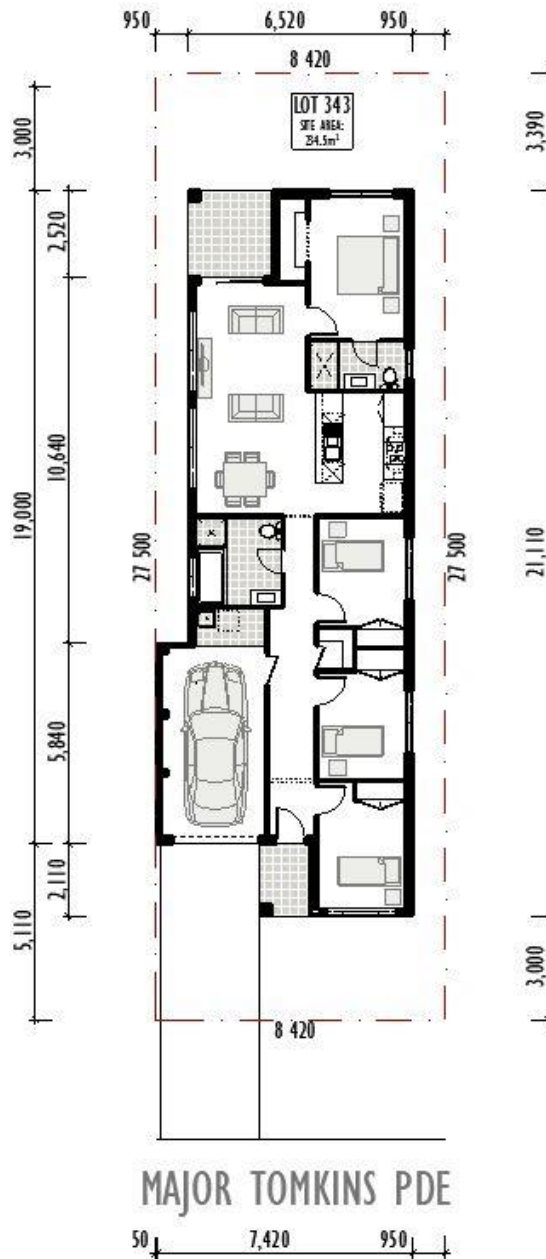
- ▶ Fixed Site Costs include Piering and Connections
- ▶ Solid concrete raft slab
- ▶ Floor tiles to Living Areas
- ▶ Carpet to bedrooms
- ▶ 2.6m ceiling height
- ▶ Reverse Cycle Air Conditioner
- ▶ Tiled concrete Porch
- ▶ Fly-screens to opening windows
- ▶ Semi-frameless shower screens
- ▶ Colorbond garage door with remote control
- ▶ Security System
- ▶ 20mm Caesarstone to kitchen benchtop
- ▶ BASIX requirements
- ▶ Roof sarking
- ▶ Instantaneous gas hot water system
- ▶ Downlight Package
- ▶ Stainless steel appliances
- ▶ Turf to front & rear yards
- ▶ Letterbox & clothesline
- ▶ Coloured concrete driveway and path to entry
- ▶ 6 months maintenance
- ▶ Blinds to windows
- ▶ H2 treated frames and trusses
- ▶ Split Contract

**Arive series**  
*You're here*

**Proven  
Professional  
Provincial Homes**



# House & Land



HOUSE	
Ground Floor	108.6m <sup>2</sup>
Garage	18.21m <sup>2</sup>
Alfresco	6.10m <sup>2</sup>
Porch	3.06m <sup>2</sup>
<b>Total</b>	<b>135.97m<sup>2</sup>/14.63sqs</b>
LAND	
Area	234.5m <sup>2</sup>

SUBJECT TO SITE INSPECTION.

For Further Information **0404 003 246**  
 Contact Pilar Riveros  
 pilar@provincialhomes.com.au  
 provincialhomes.com.au

Disclaimer: The information contained herein is subject to Council Approval. The details in the brochure and any associated marketing material are subject to change without prior notice and are for information purposes only. All illustrations and plans are indicative. Provincial Homes reserves the right to change plans, specification and prices without notice. Each home design and construction is copyright by Provincial Homes Pty Ltd.