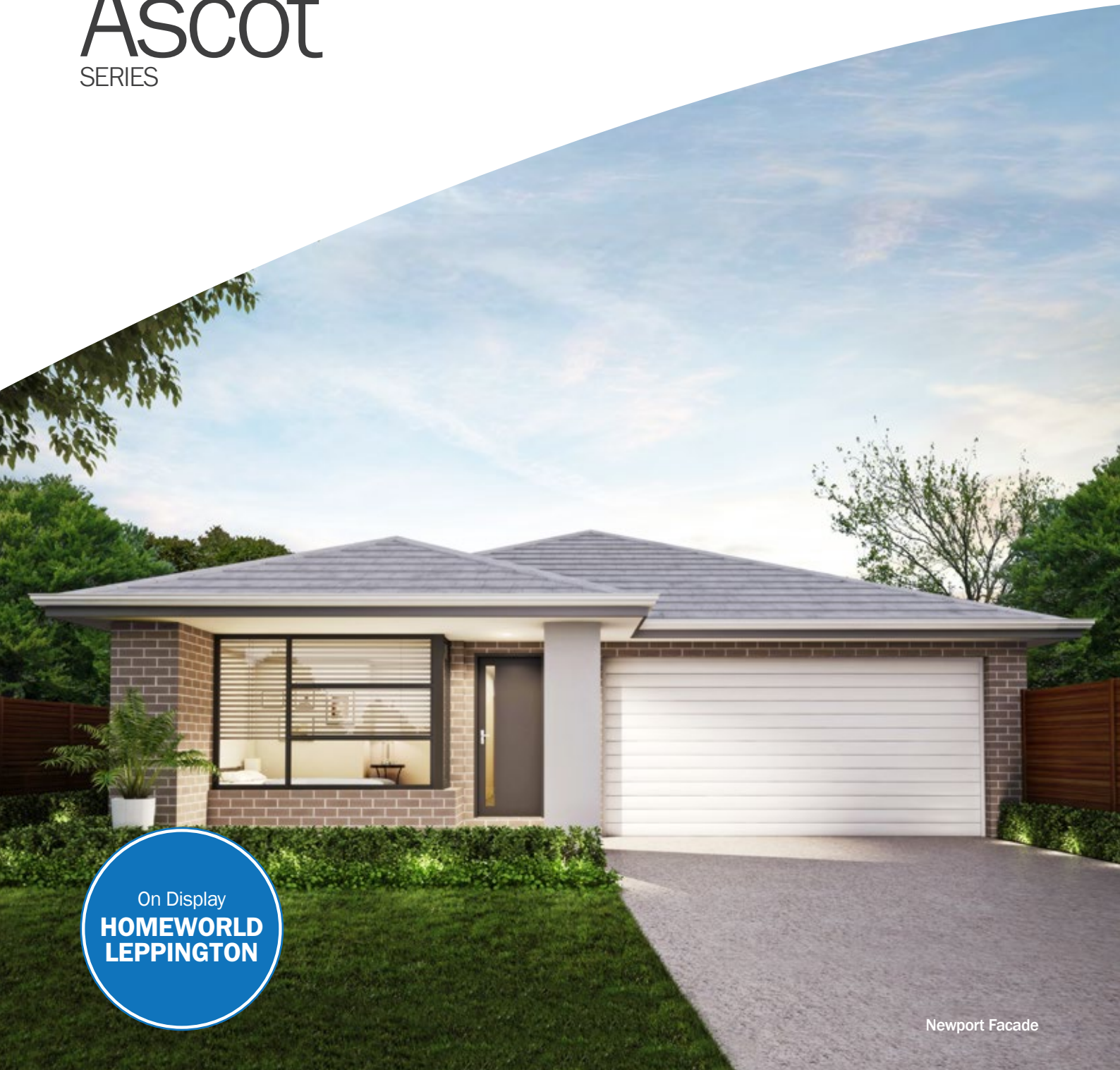


# Ascot

SERIES



On Display  
**HOMEWORLD  
LEPPINGTON**

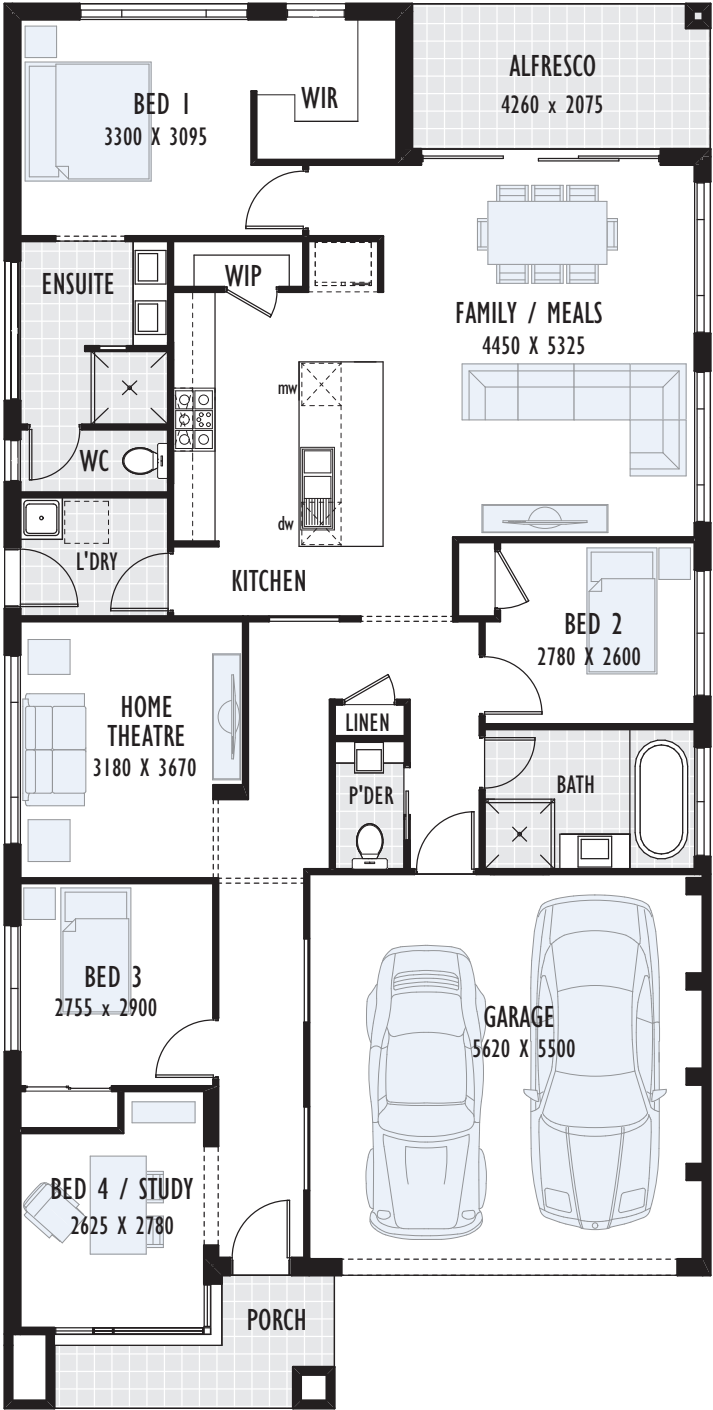
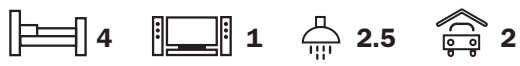
Newport Facade



Proven  
Professional  
Provincial Homes



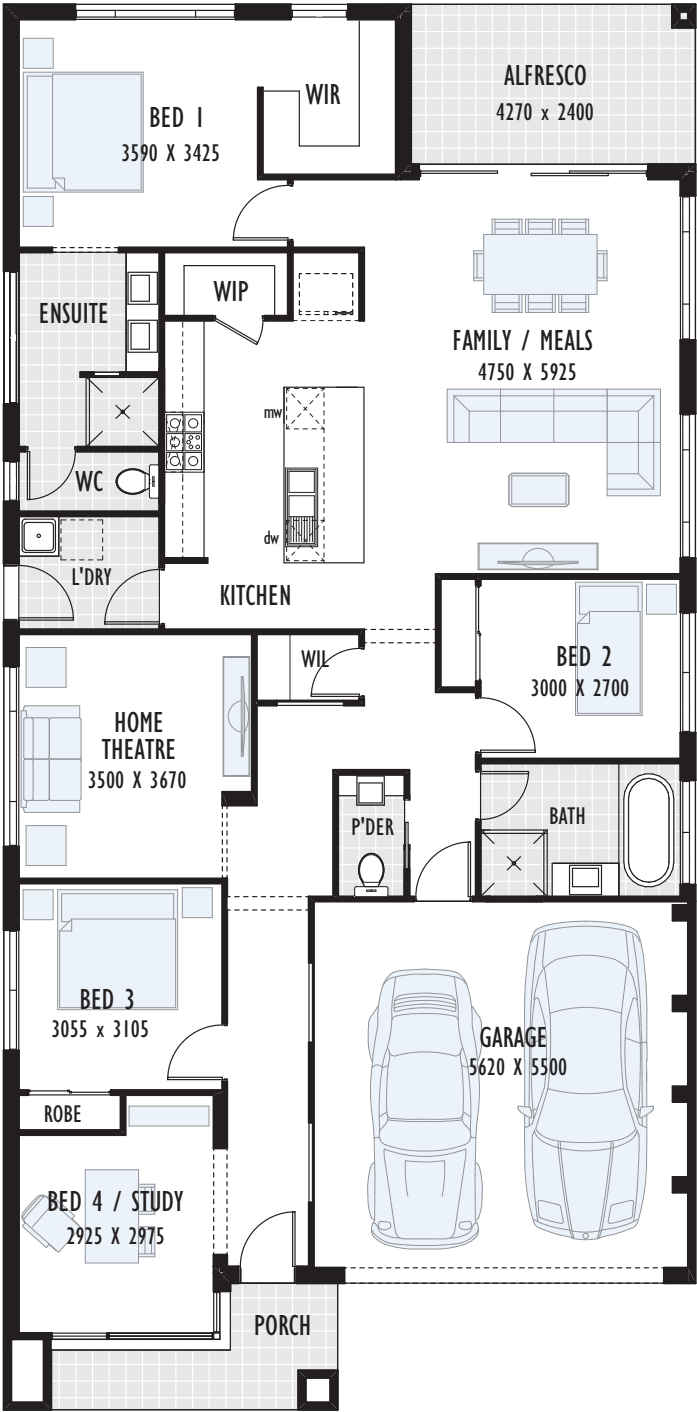
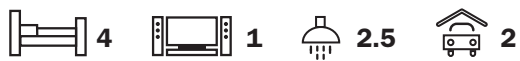
# Ascot 20



Floor Area	144.48m <sup>2</sup>
Garage	32.83m <sup>2</sup>
Alfresco	8.84m <sup>2</sup>
Porch	5.85m <sup>2</sup>

Total	192.00m <sup>2</sup> /20.66sq
Width	10.08m
Depth	20.06m
Minimum block width required	12.080m

# Ascot 22



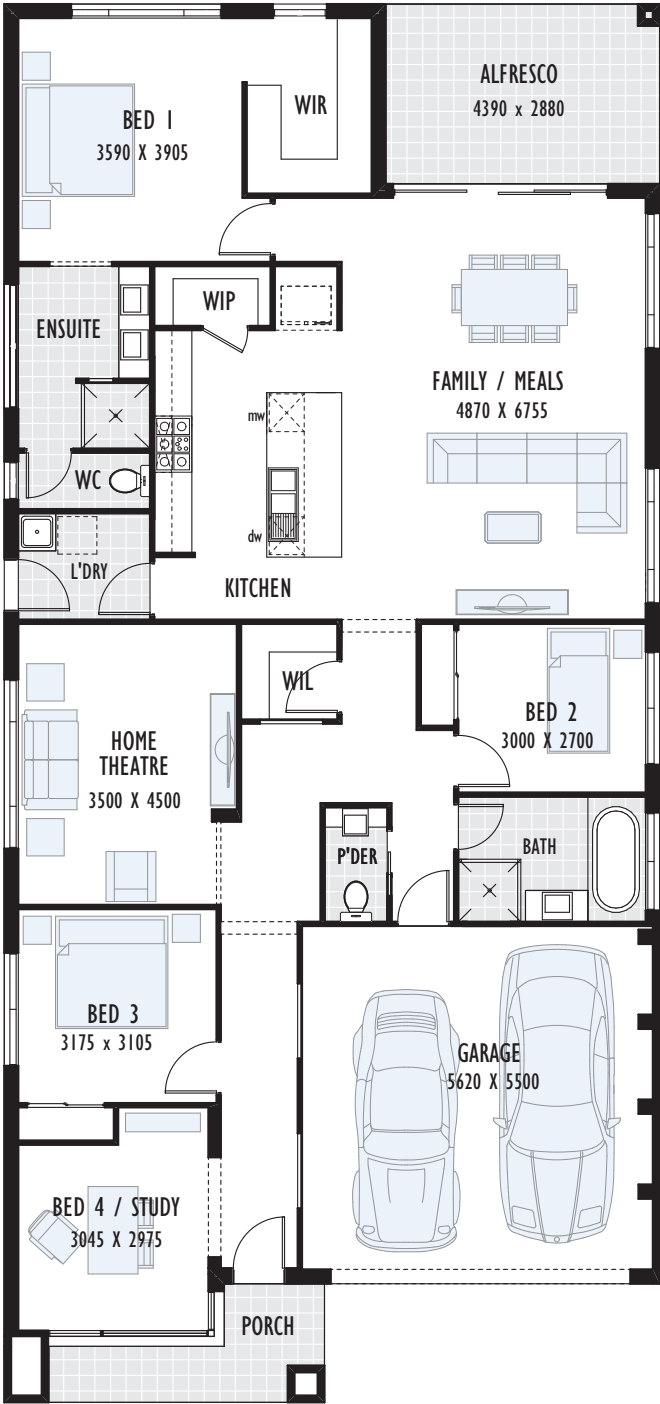
Floor Area	159.51m <sup>2</sup>
Garage	32.83m <sup>2</sup>
Alfresco	10.25m <sup>2</sup>
Porch	6.12m <sup>2</sup>

Total	208.71m <sup>2</sup> /22.46sq
Width	10.38m
Depth	21.09m
Minimum block width required	12.380m

# Ascot 24

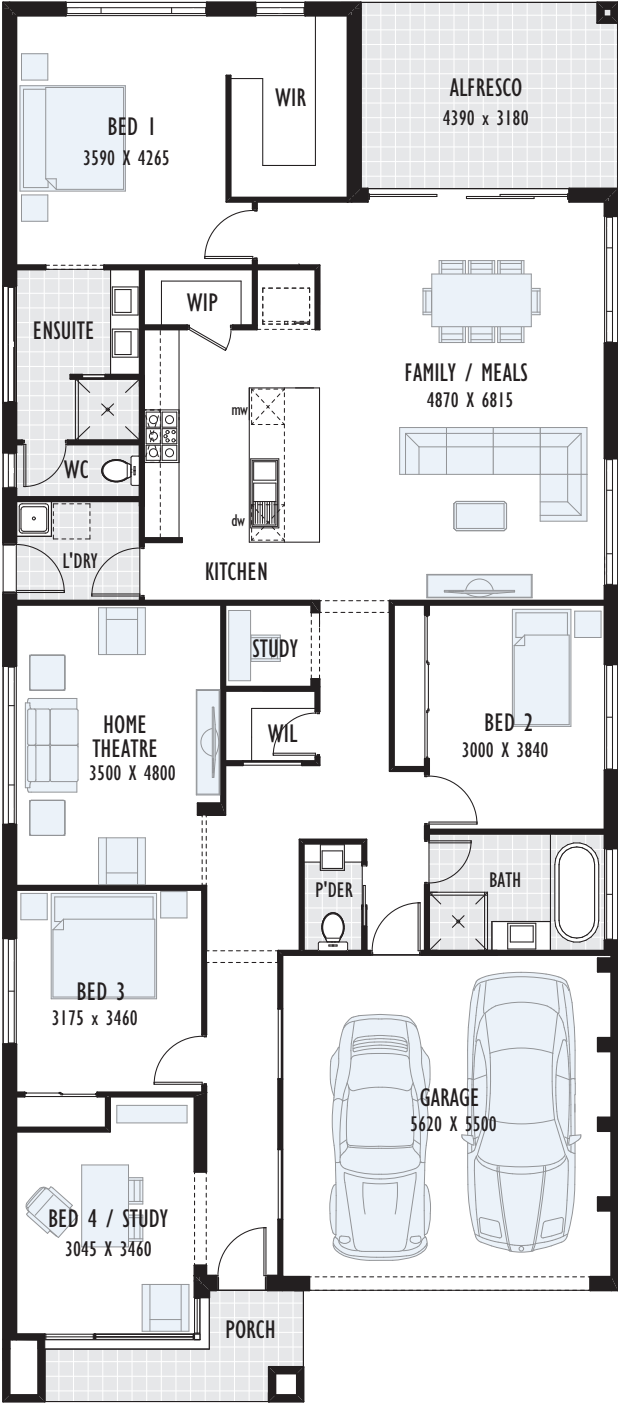
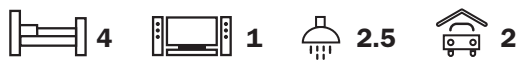


4 1 2.5 2



Floor Area	173.29m <sup>2</sup>	Total	224.99m <sup>2</sup> /24.21sq
Garage	32.83m <sup>2</sup>	Width	10.50m
Alfresco	12.64m <sup>2</sup>	Depth	22.40m
Porch	6.23m <sup>2</sup>	Minimum block width required	12.50m

# Ascot 26



Floor Area	187.73m <sup>2</sup>
Garage	32.83m <sup>2</sup>
Alfresco	13.96m <sup>2</sup>
Porch	6.23m <sup>2</sup>

Total	240.75m <sup>2</sup> /25.91sq
Width	10.50m
Depth	23.90m
Minimum block width required	12.50m



# Ascot Facade Options



Classic Facade



Cobbity Cottage Facade



Daytona Facade



Prelude Facade



San Remo Facade



Stamford Facade



**Concourse Facade**



**Conrad Facade**



**Promenade Facade**



**Salamanda Facade**



**Suburban Facade**

Floor plans may vary subject to facade. Facade finishes include, face brick from selected range, Moroka bagged and paint finish to front feature, concrete roof tiles, aluminium windows and doors, Seville panelift garage door, or unless specified. All Illustrations are drawn to 2.4m ceiling height.



## ON DISPLAY

---

### HEMEWORLD LEPPINGTON

Coral Circuit, Leppington  
OPEN 7 DAYS 10am to 5pm

---



GREAT  
SERVICE



FAST  
APPROVAL TIME



DESIGN  
FLEXIBILITY



VALUE  
FOR MONEY



HIGH QUALITY  
STANDARD



EXPERIENCE

[provincialhomes.com.au](http://provincialhomes.com.au)



Proven  
Professional  
Provincial Homes

